



How To Use Larger Time Frames To Catch Bigger Moves

PRESENTED BY:

Megan Marlow

DISCLAIMER

BearBullTraders.com employees, contractors, shareholders and affiliates, are **NOT an investment advisory service, a registered investment advisor or a broker-dealer** and does not undertake to advise clients on which securities they should buy or sell for themselves.

You understand that **NO content published as part of the Bear Bull Trading Room and its Website constitutes a recommendation** that any particular investment, security, portfolio of securities, transaction or investment strategy is suitable for any specific person.

You further understand that **none of the creators or providers of our Services or their affiliates will advise you personally** concerning the nature, potential, value or suitability of any particular investment, security, portfolio of securities, transaction, investment strategy or other matter.

Overview

- What is a higher time frame range (HTFR)?
- Why should I use a HTFR?
- How to spot a HTFR
- Using paired pivots for better RvR
- Using ATR for stops
- Holding for larger moves and where to take profit
- Using the market and correlated sector to time entries/exits

What is a higher time frame range?

Weekly

Daily

60min

Why Use A Higher Time Frame Range?



Higher time frame ranges can be utilized intraday to find levels with more participants.



Easier to see a clearer picture of the stock as a whole – trend, areas of liquidity, where the stock may be heading next, etc.



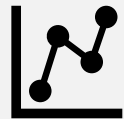
Provide more room for the stock to move, creating longer intraday holds. Larger time frame ranges = larger moves; Smaller time frame ranges = smaller moves (use these for profit taking or areas to add).



Why Use A Higher Time Frame Range?



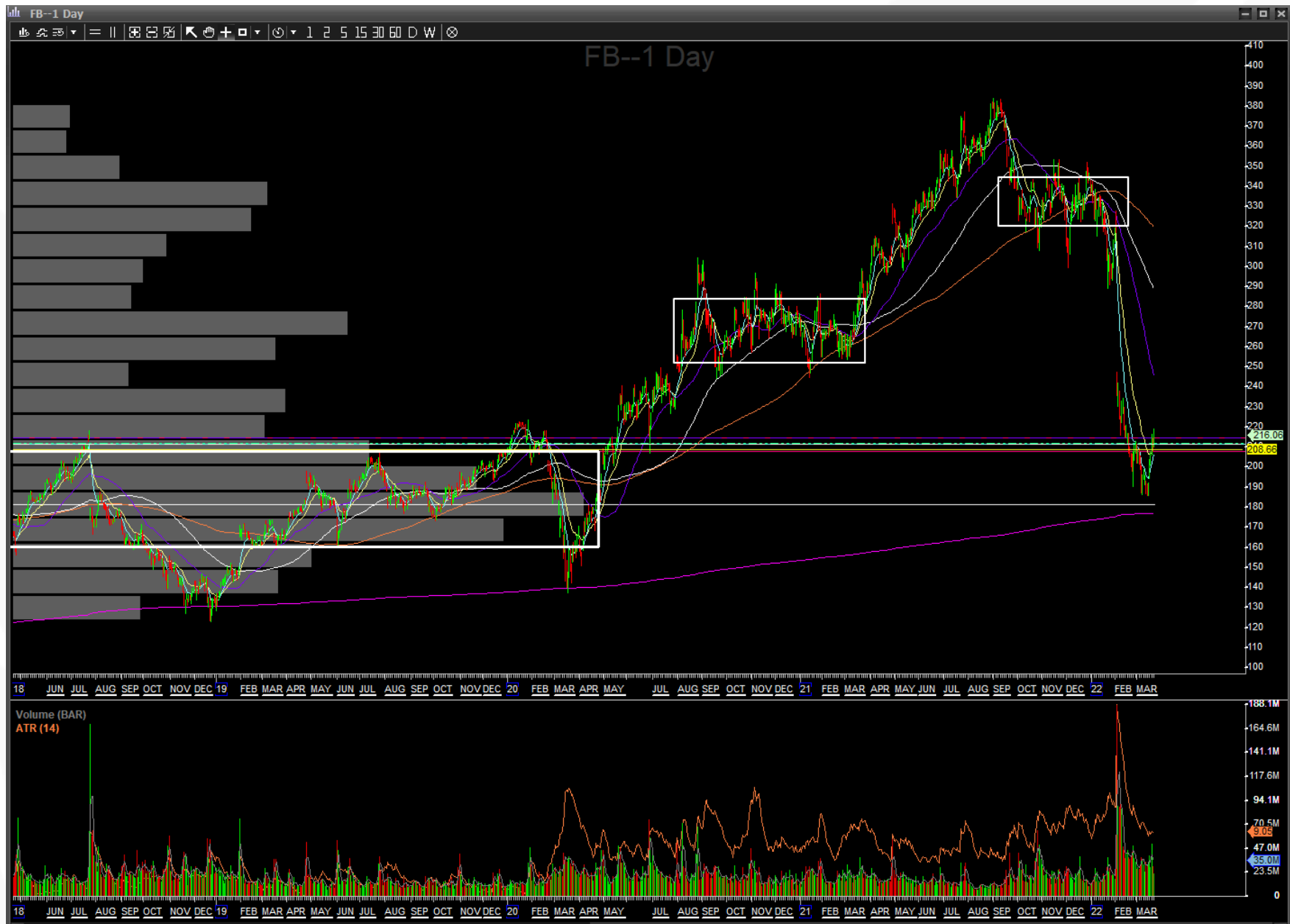
Higher time frame ranges can be utilized intraday to find levels with more participants.



Easier to see a clearer picture of the stock as a whole – trend, areas of liquidity, where the stock may be heading next, etc.



Provide more room for the stock to move, creating longer intraday holds. Larger time frame ranges = larger moves; Smaller time frame ranges = smaller moves (use these for profit taking or areas to add).



How To Spot A Higher Time Frame Range

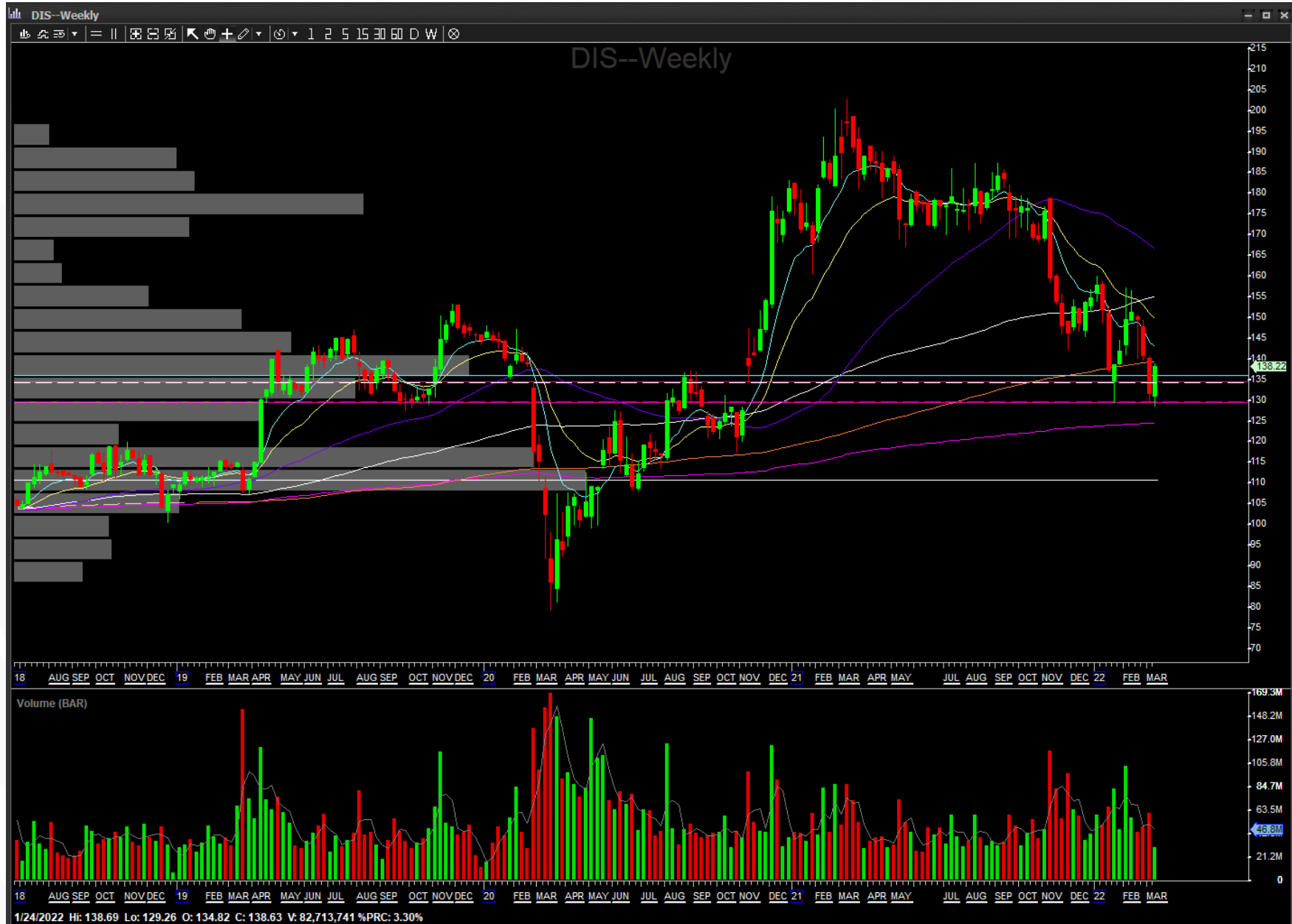
- Find areas where a stock has consolidated or "bounced around" for multiple days or weeks.
- Look for **easy rectangles**. These rectangles should pop out at first glance – if you can see them, so can everyone else!

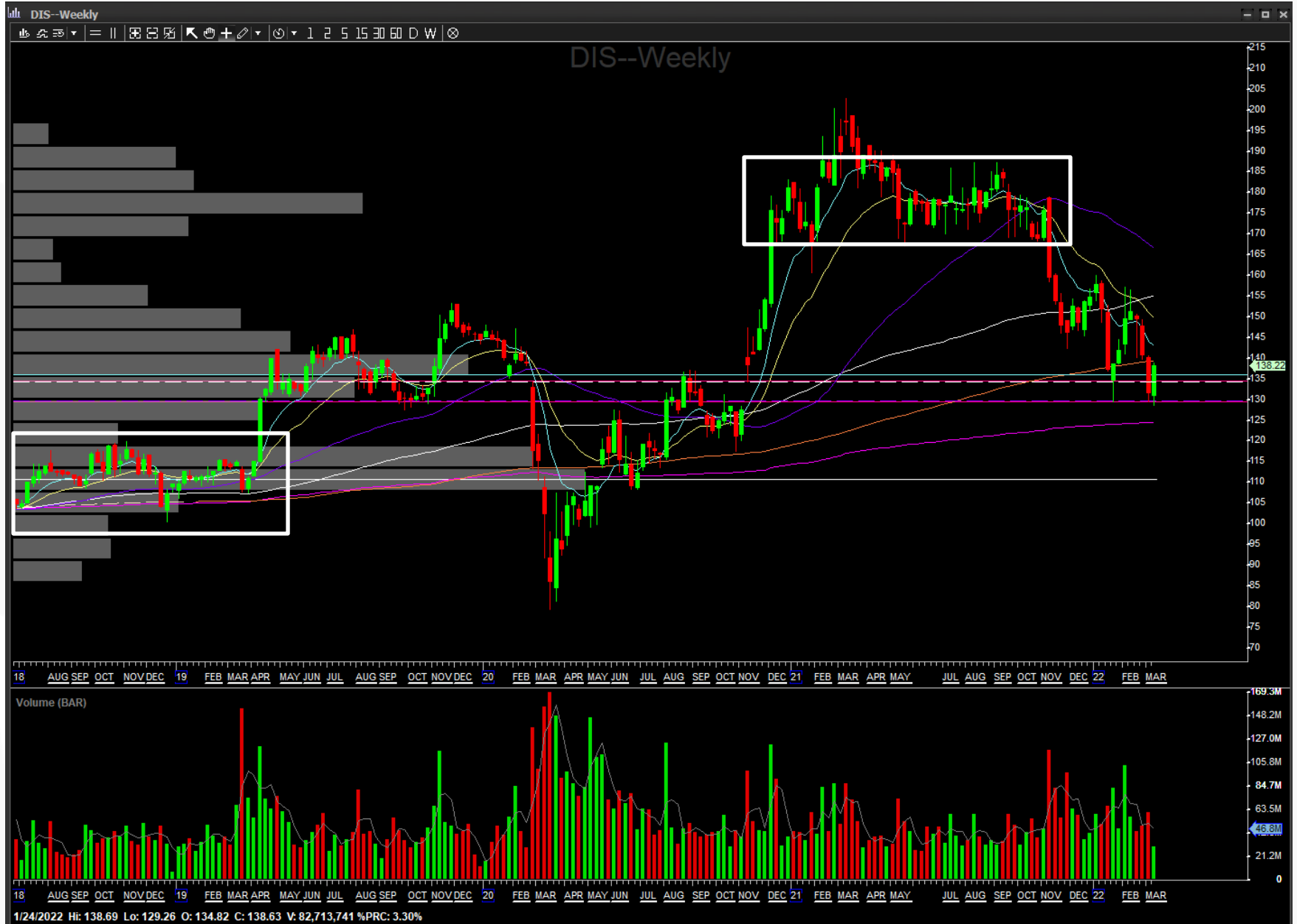
















Narrowing Down The Range

Focus on finding a "condensed" area.

The more candles that are included, the better.

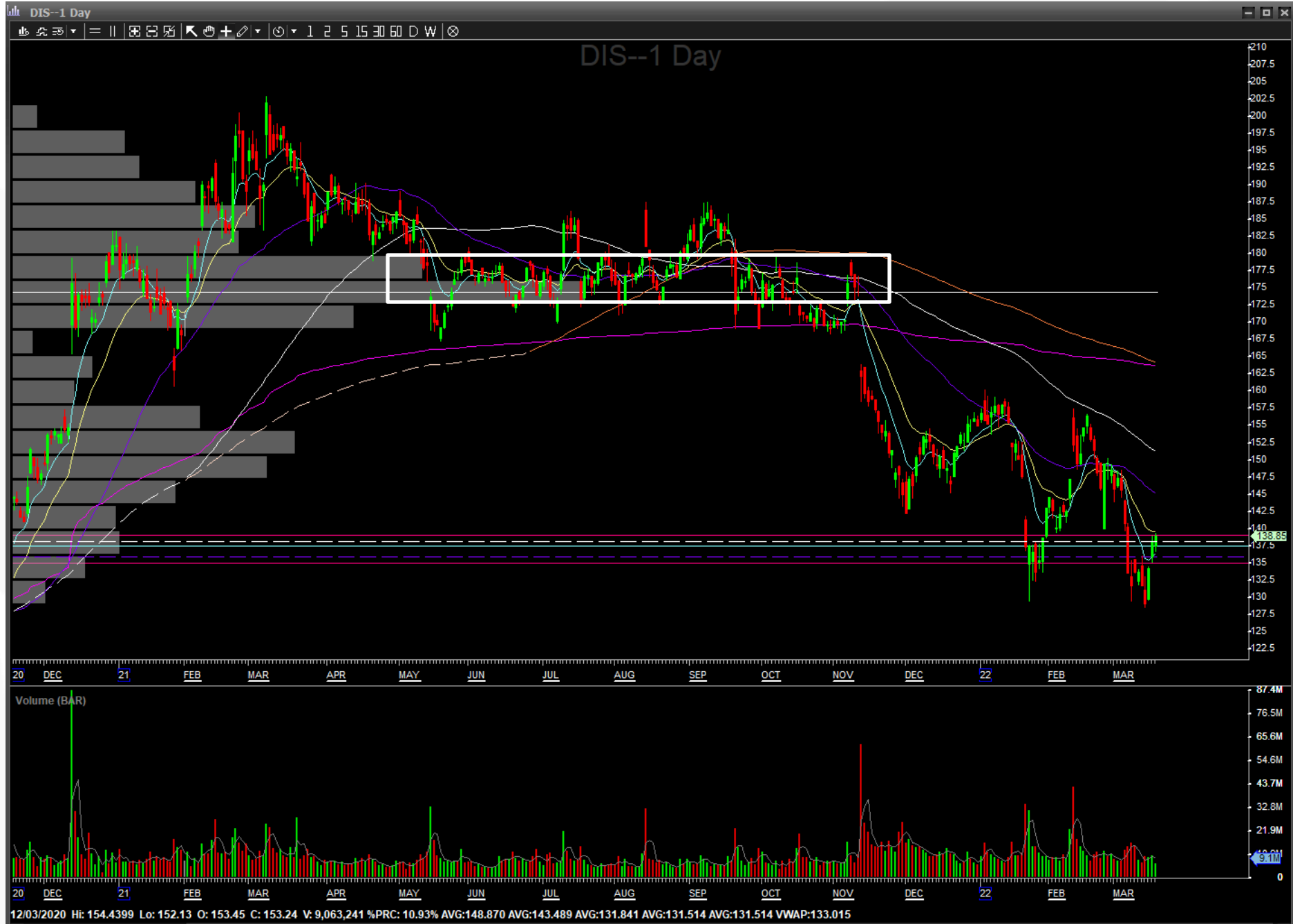
Note where support becomes resistance and vice versa

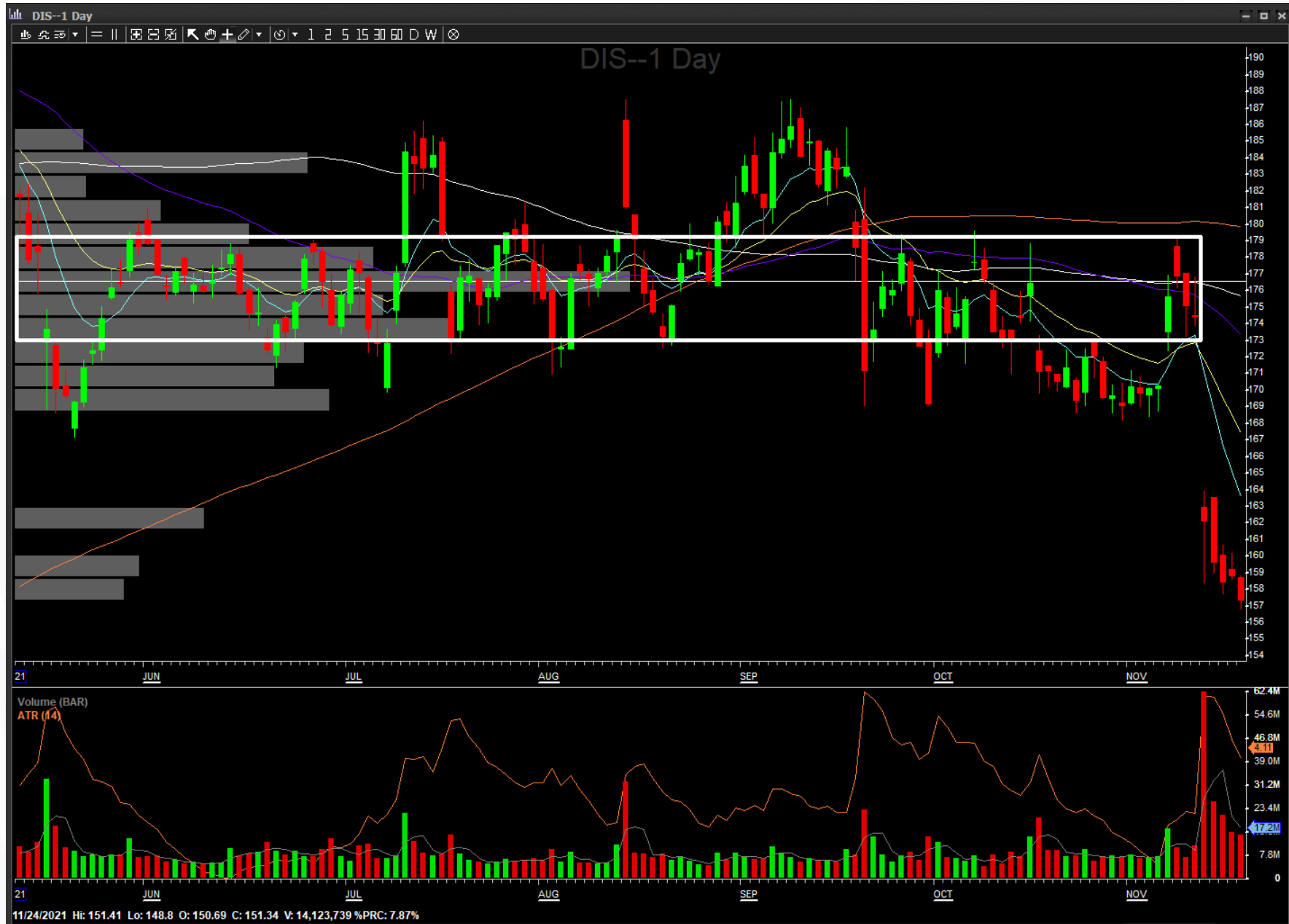
Look for peaks and valleys.

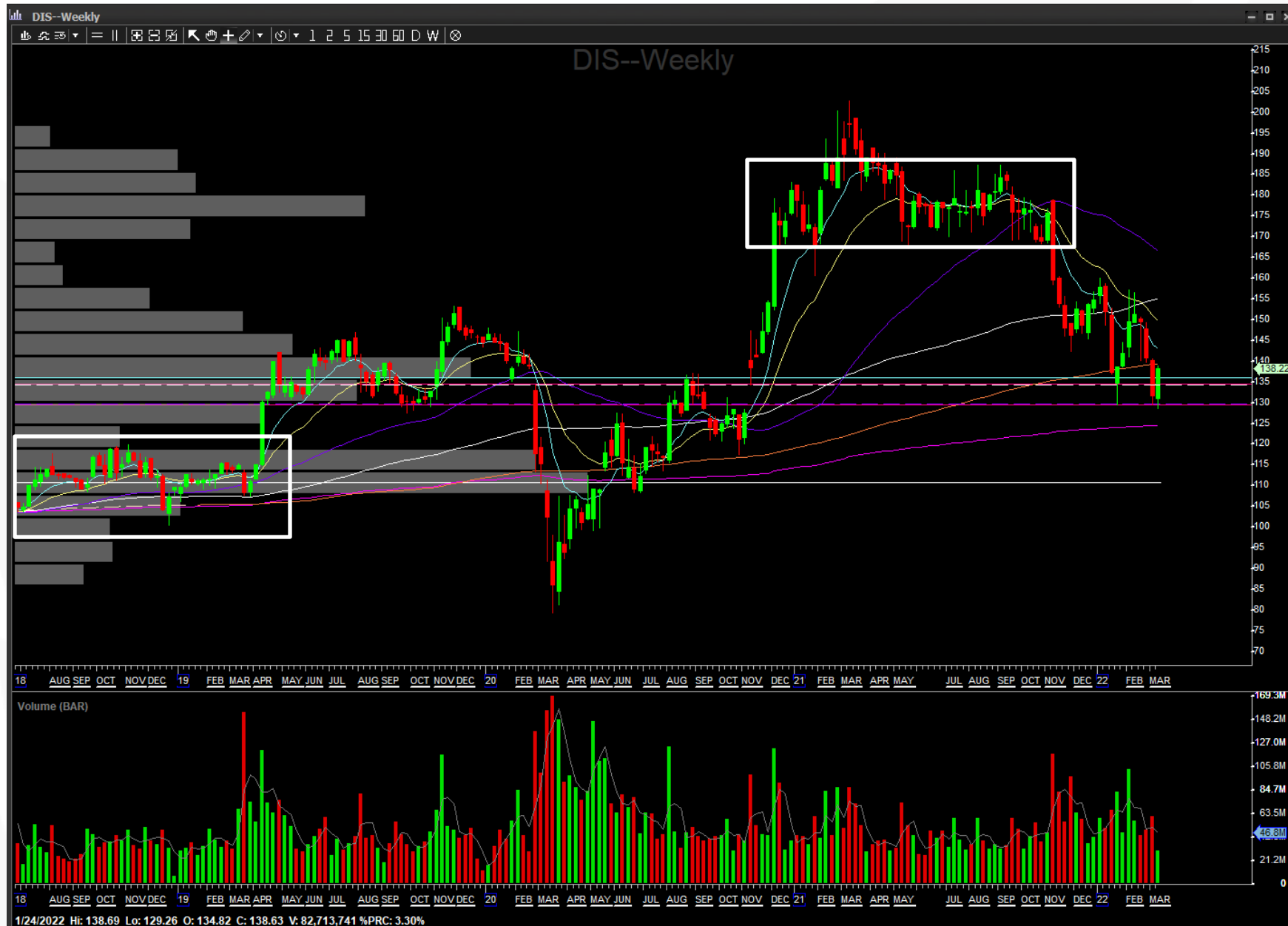


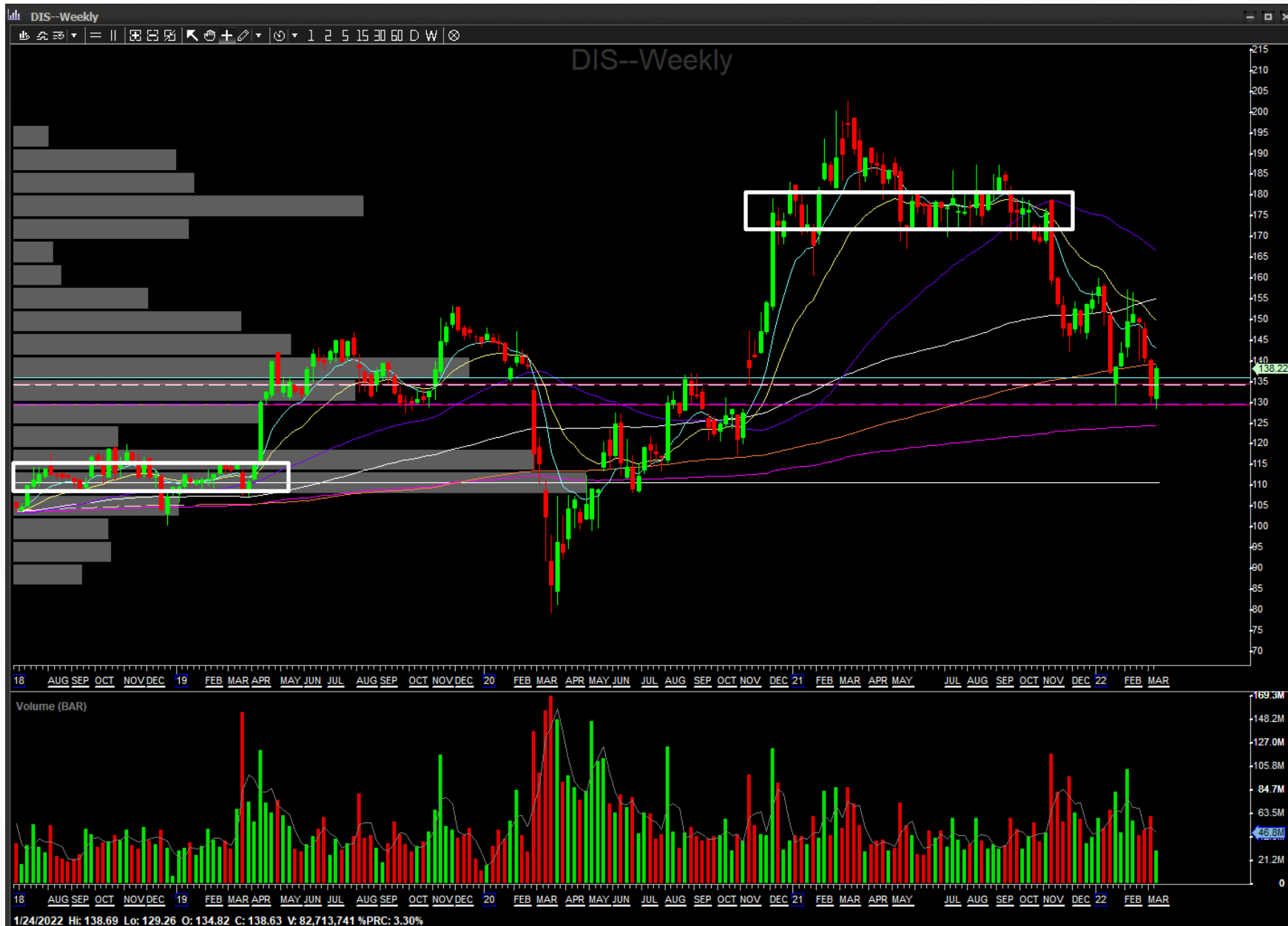








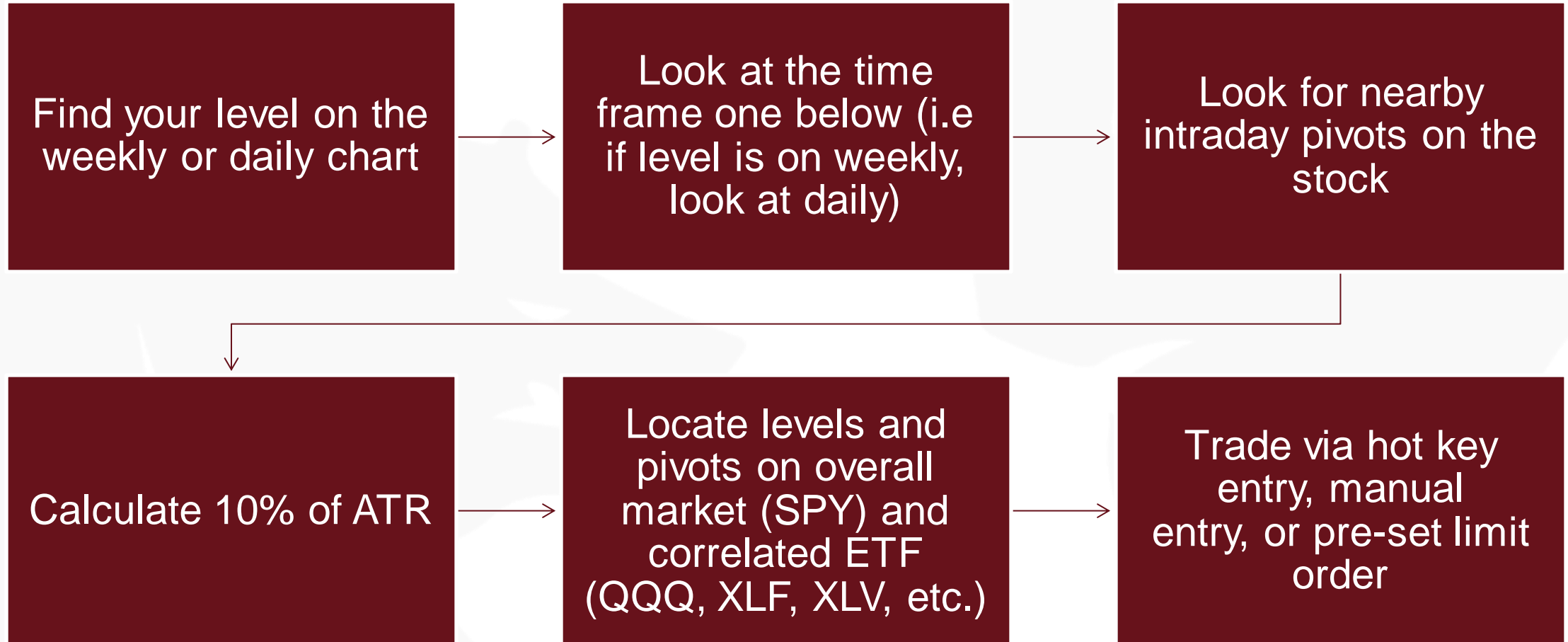






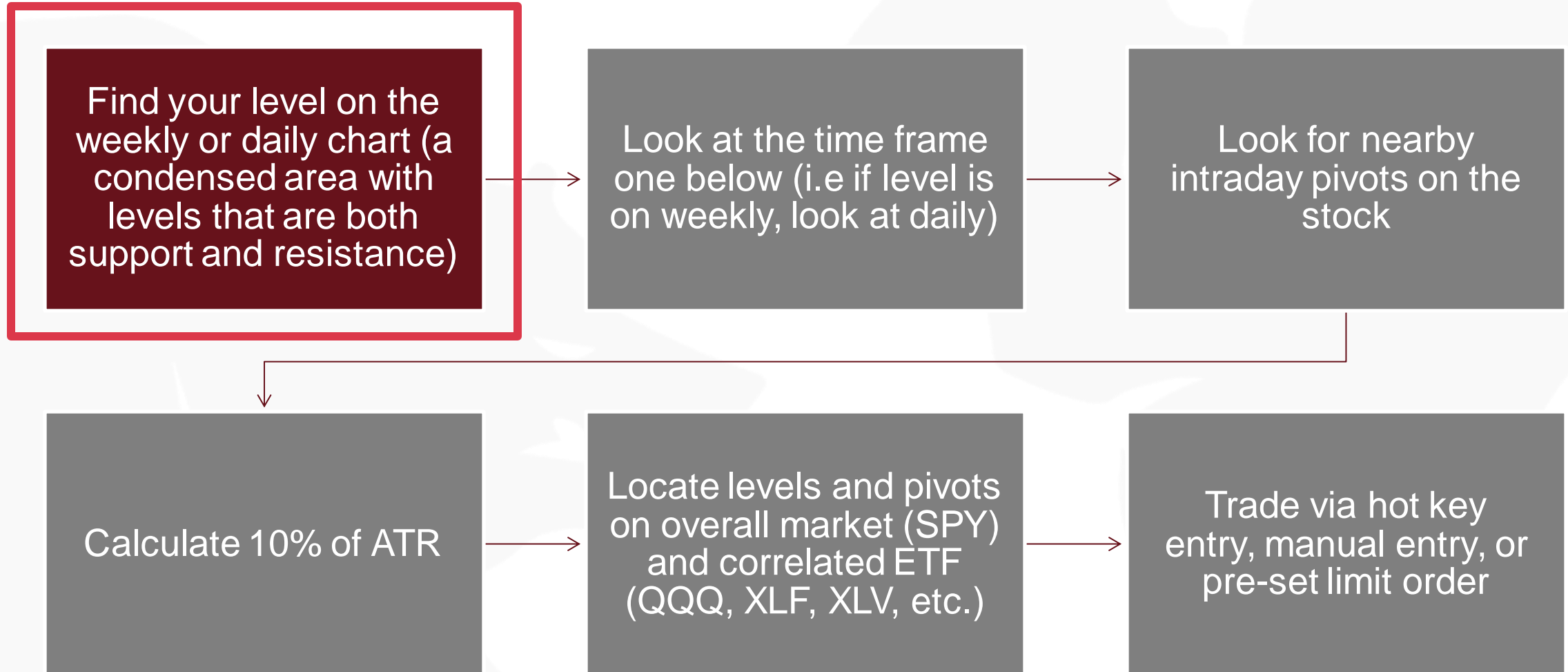


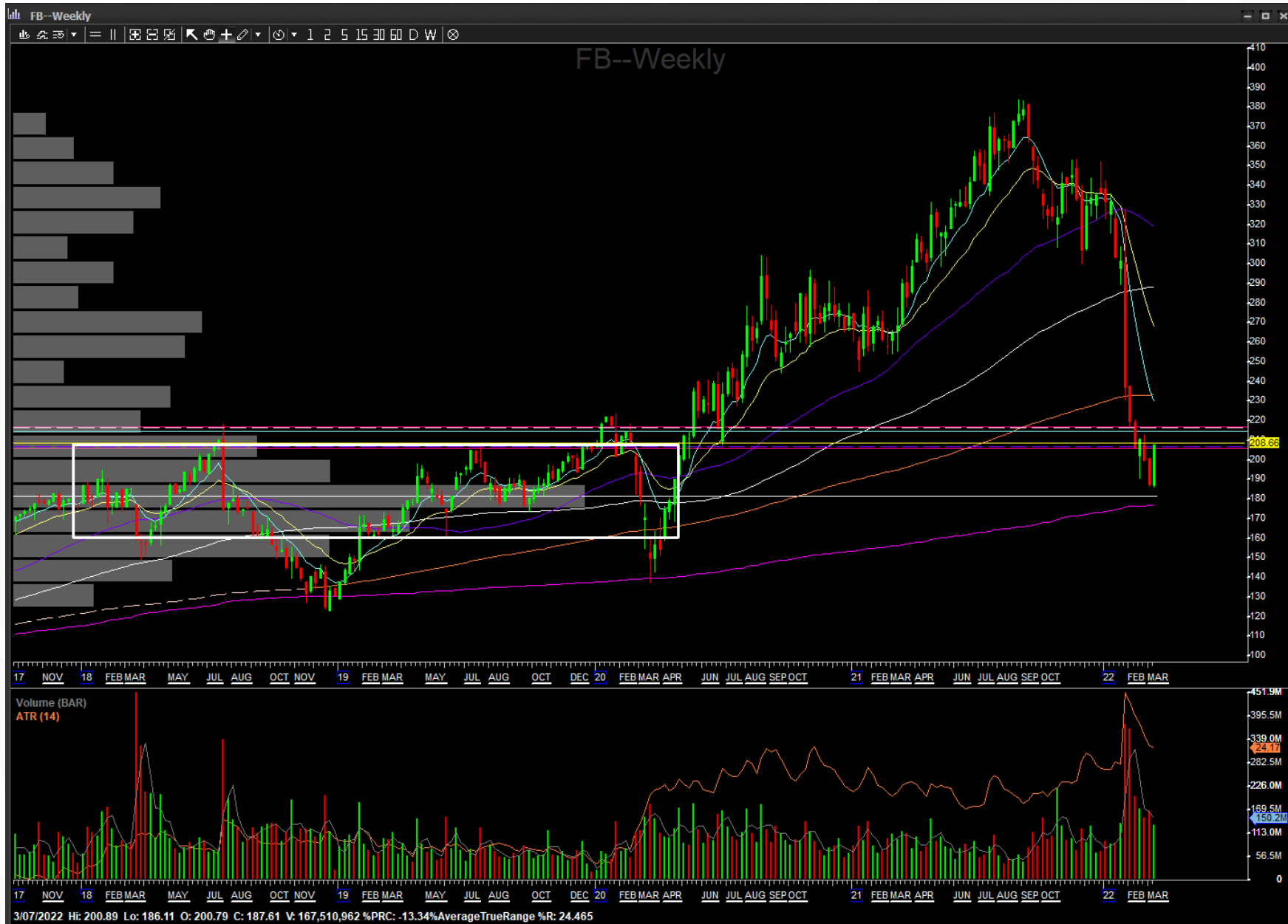
How To Trade Higher Time Frame Ranges



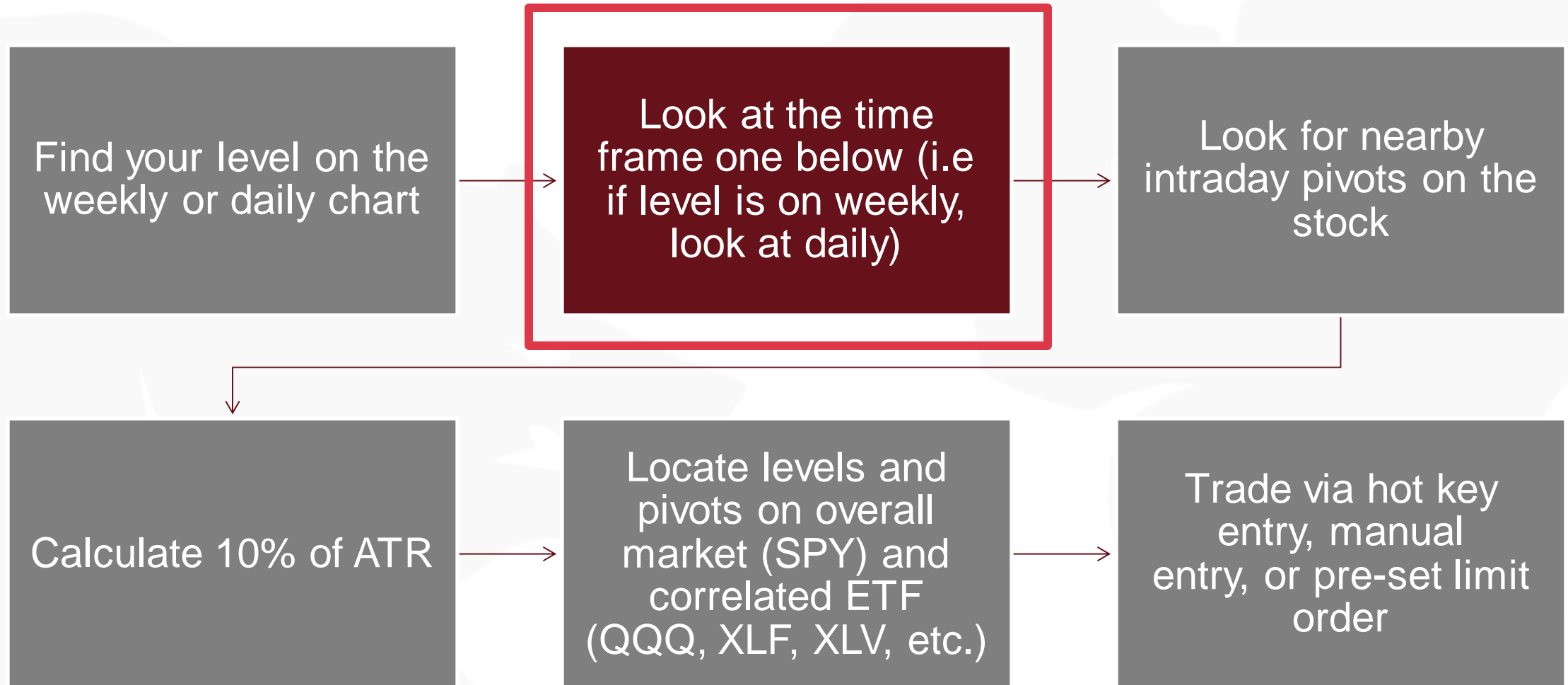
FB

How To Trade Higher Time Frame Ranges

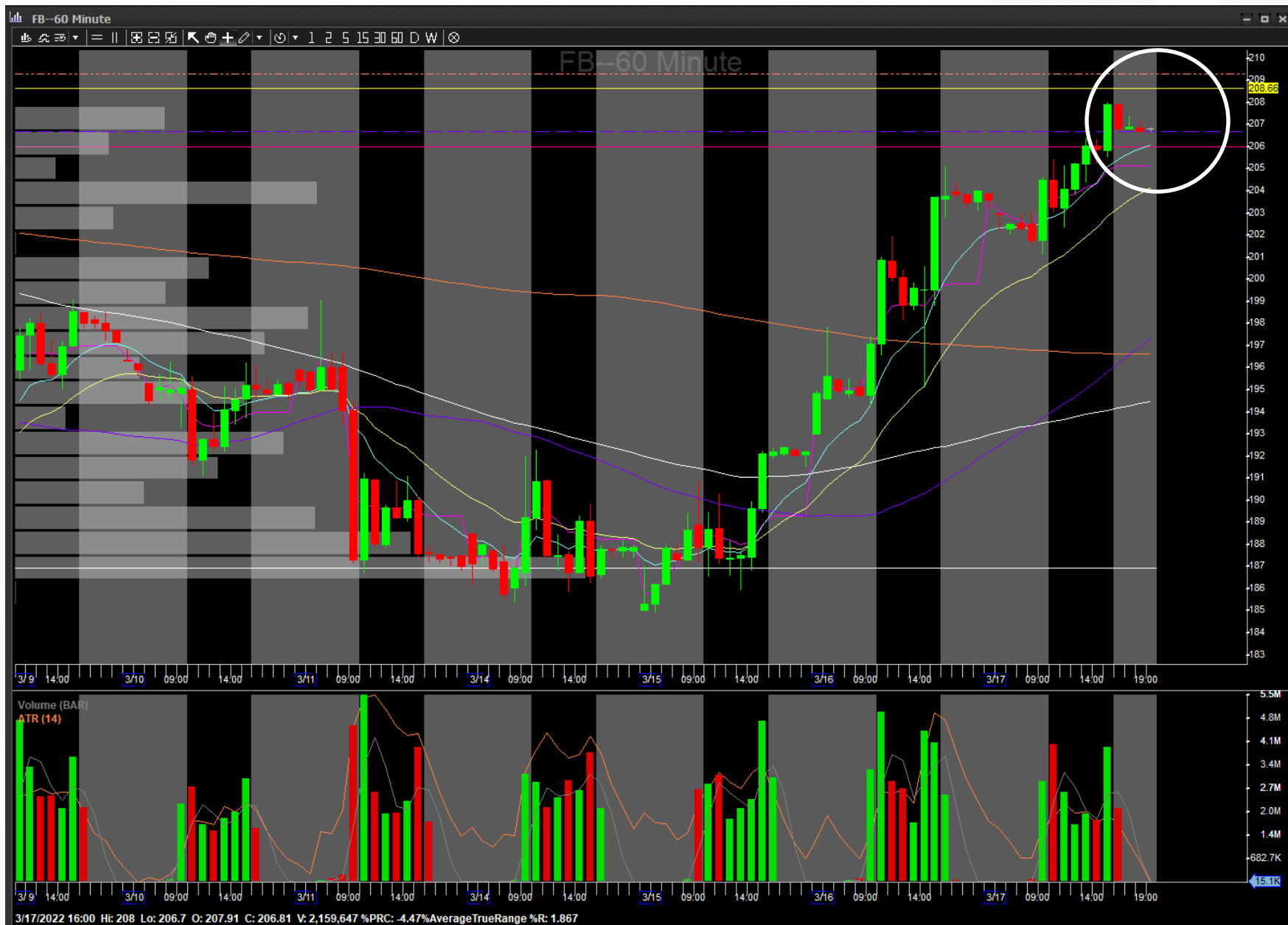




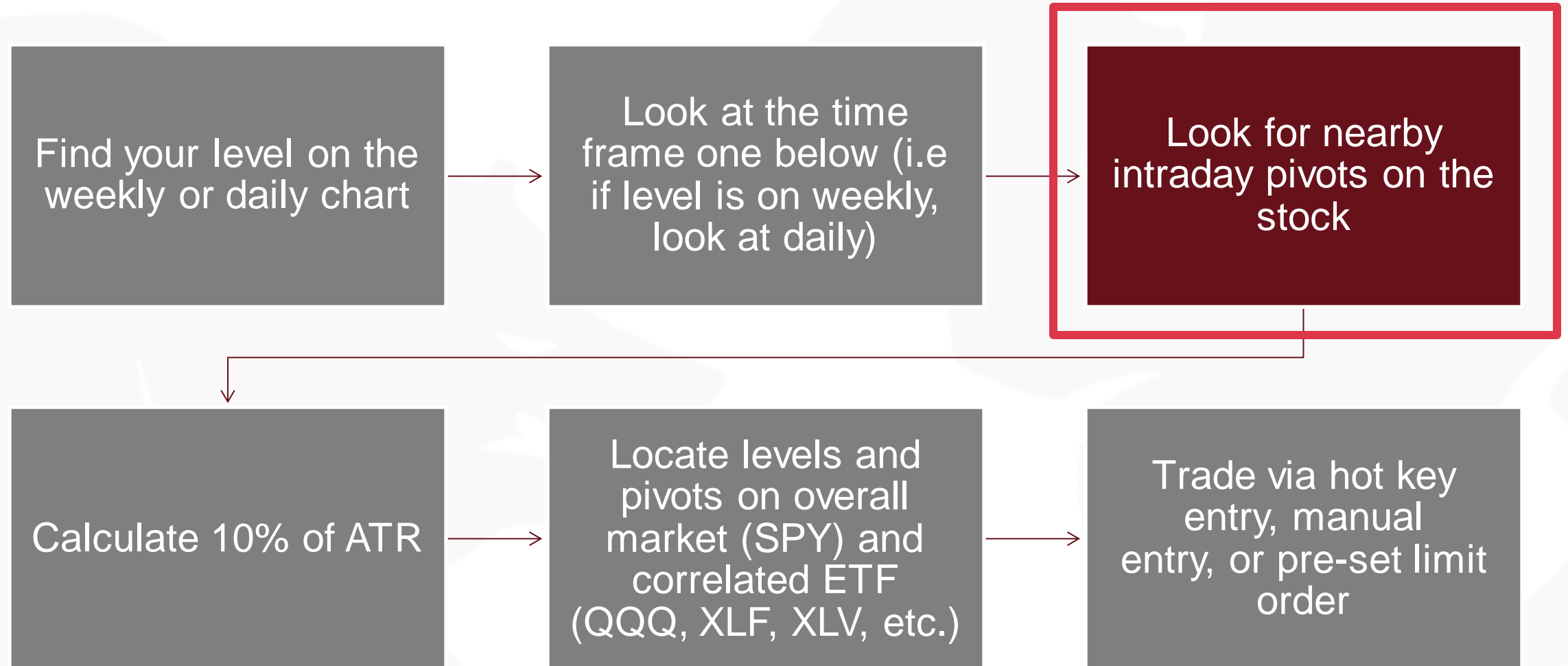
How To Trade Higher Time Frame Ranges

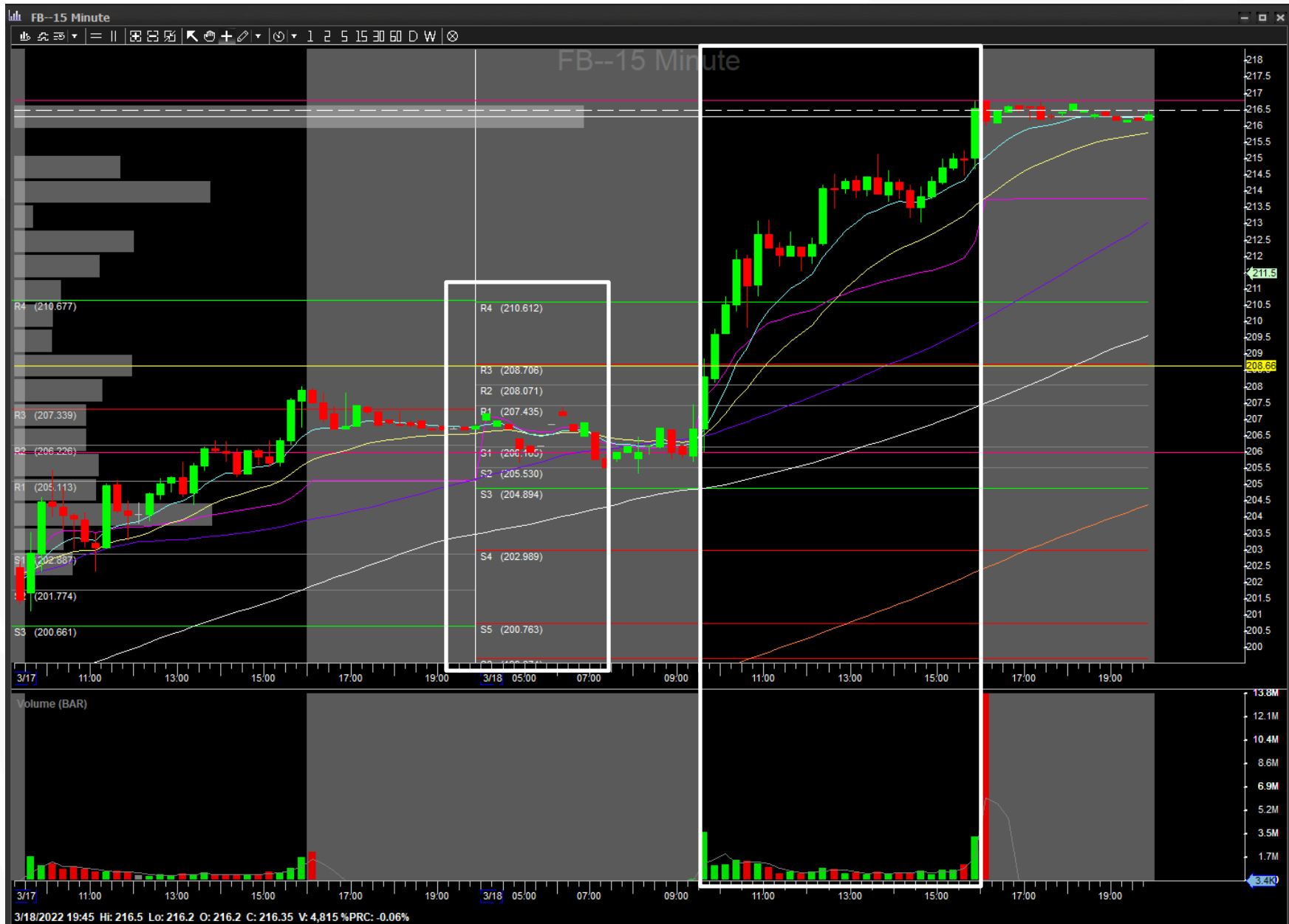




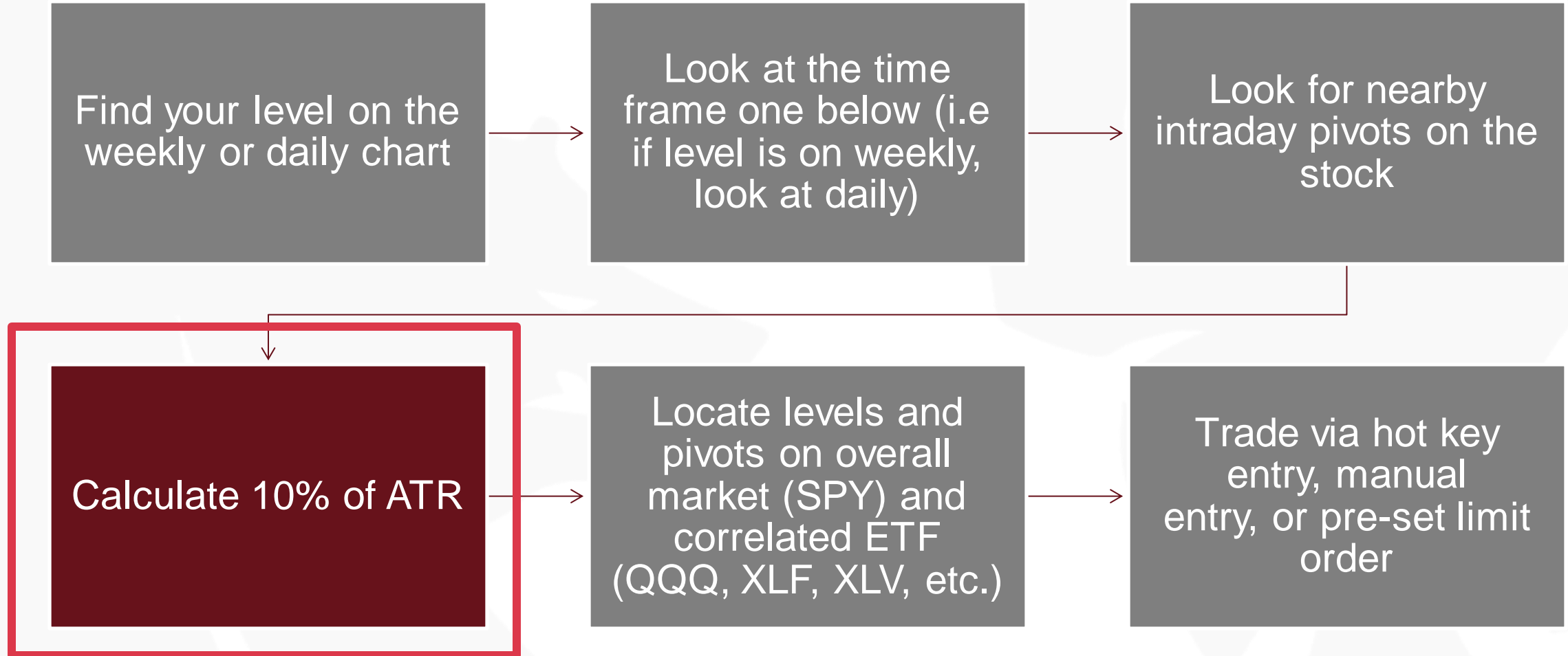


How To Trade Higher Time Frame Ranges





How To Trade Higher Time Frame Ranges





Perf Year	-25.46%
Perf YTD	-35.59%
Beta	1.39
ATR	8.83
Volatility	4.25% 4.31%
Prev Close	211.49
Price	216.65

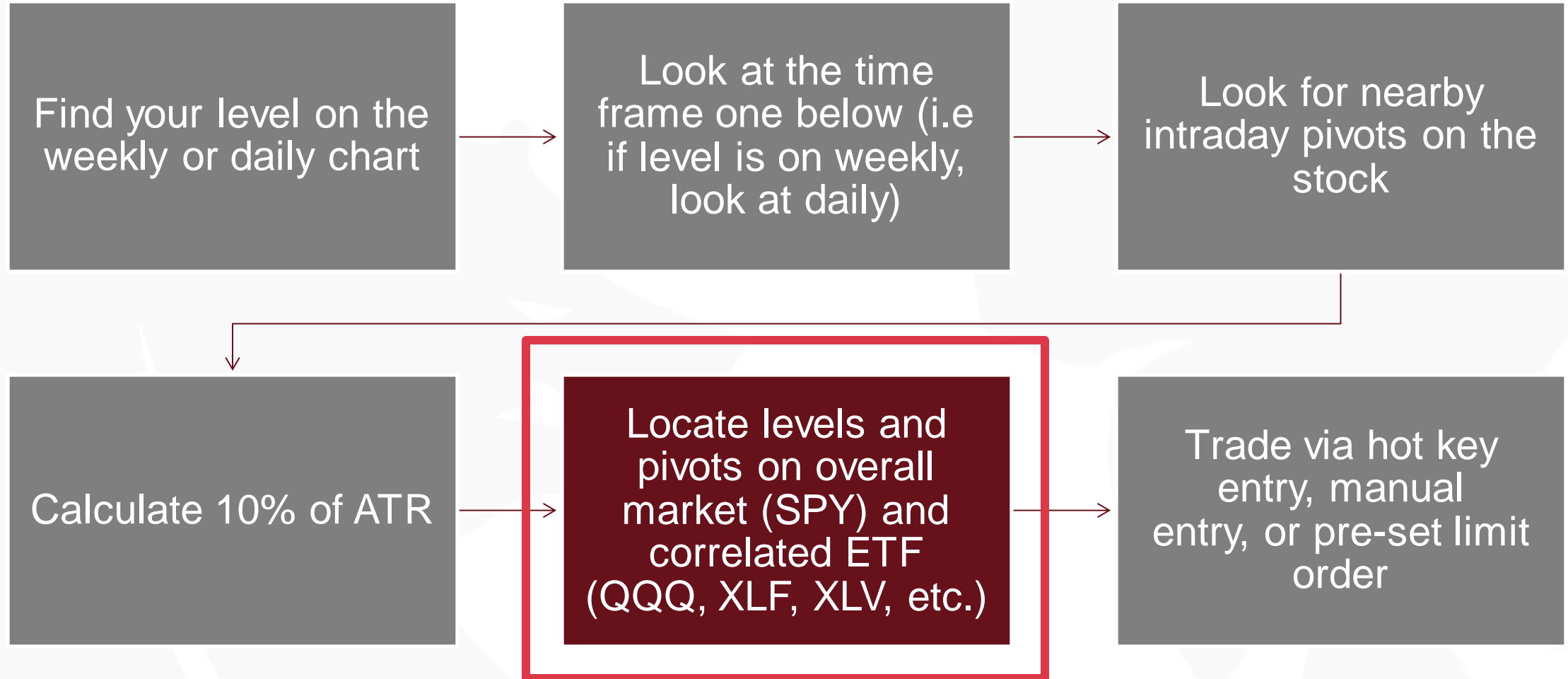
FB [NASDAQ]
Meta Platforms, Inc.
 Communication Services | Internet Content & Information | USA

Index	S&P 500	P/E	15.71	EPS (ttm)	13.79	Insider Own	0.53%	Shs Outstand	2.76B	Perf Week	12.82%
Market Cap	566.15B	Forward P/E	14.97	EPS next Y	14.47	Insider Trans	-15.41%	Shs Float	2.30B	Perf Month	5.09%
Income	39.37B	PEG	0.85	EPS next Q	2.55	Inst Own	79.10%	Short Float	1.36%	Perf Quarter	-33.43%
Sales	117.93B	P/S	4.80	EPS this Y	36.40%	Inst Trans	-3.18%	Short Ratio	0.88	Perf Half Y	-39.40%
Book/sh	45.18	P/B	4.80	EPS next Y	16.79%	ROA	23.50%	Target Price	324.22	Perf Year	-25.46%
Cash/sh	18.37	P/C	11.80	EPS next 5Y	18.50%	ROE	29.70%	52W Range	185.82 - 384.33	Perf YTD	-35.59%
Dividend	-	P/FCF	14.47	EPS past 5Y	31.60%	ROI	31.00%	52W High	-43.63%	Beta	1.39
Dividend %	-	Quick Ratio	3.20	Sales past 5Y	33.70%	Gross Margin	80.80%	52W Low	16.59%	ATR	8.83
Employees	71970	Current Ratio	3.20	Sales Q/Q	19.90%	Oper. Margin	39.60%	RSI (14)	51.06	Volatility	4.25% 4.31%
Optionable	Yes	Debt/Eq	0.00	EPS Q/Q	-5.20%	Profit Margin	33.40%	Rel Volume	0.91	Prev Close	211.49

statements



How To Trade Higher Time Frame Ranges



ETFs With Facebook, Inc. Class A

FB

Meta Platforms Inc. Class A

329

ETFs Hold FB

189.1M

FB Shares in ETFs

QQQ

Biggest Holder

XLC

Largest Allocation

Ad closed by Google

ETF.com Insight

Meta Platforms Inc. Class A is a company in the U.S. stock market and it is a holding in 329 U.S.-traded ETFs. FB has around 189.1M shares in the U.S. ETF market. The largest ETF holder of FB is the Invesco QQQ Trust (QQQ), with approximately 29.23M shares. Investors may also find of interest that the ETF with the largest allocation to FB stock is Communication Services Select Sector SPDR Fund (XLC), with a portfolio weight of 19.29%. On average, U.S. ETFs allocate 1.96% of FB to their portfolios.

Additionally, FB is a favorite stock for Active and Vanilla ETFs. It is also most likely to belong to Broad-based ETFs. The best-performing ETF in the past 12 months with FB as a holding is the ProShares Ultra QQQ (QLD), with a return of 142.01%.

Ticker	Fund Name	# OF SHARES
QQQ	Invesco QQQ Trust	29.23M
SPY	SPDR S&P 500 ETF Trust	25.00M

QQQ

Biggest Holder

XLC

Largest Allocation

ETF.com/stock/FB

ETFs with the most FB Exposure

Ticker	Fund Name	% Allocation
XLC	Communication Services Select Sector SPDR Fu...	19.29%
FCOM	Fidelity MSCI Communication Services Index E...	13.09%
VOX	Vanguard Communication Services ETF	12.71%
IXP	iShares Global Comm Services ETF	11.76%
KNGS	UPHOLDINGS Compound Kings ETF	11.55%

Top performing ETFs with FB

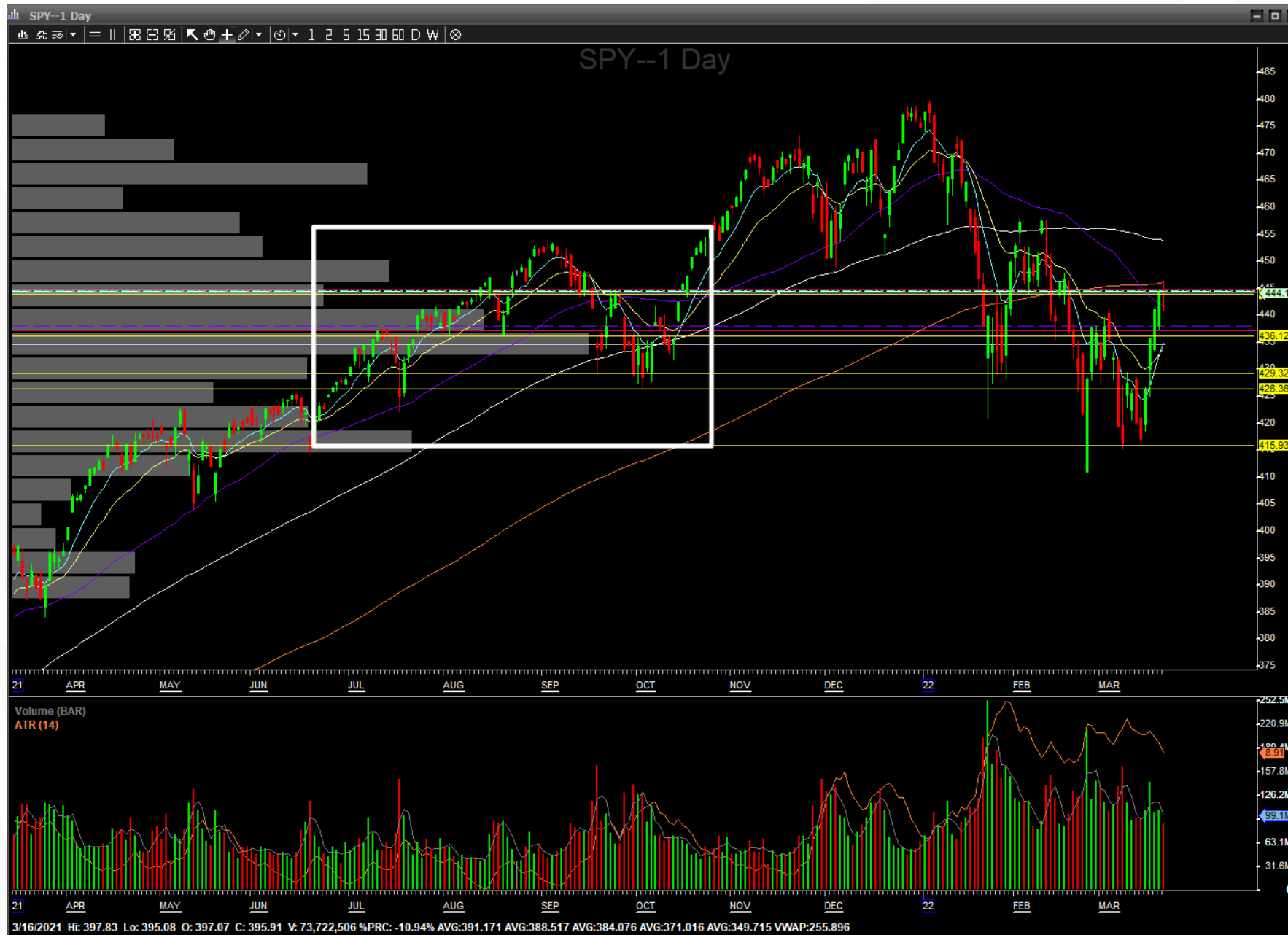
Ticker	Fund Name	30-day % Change
WWOW	Direxion World Without Waste ETF	8.11%
MVPS	Amplify Thematic All-Stars ETF	7.05%
UPRO	ProShares UltraPro S&P500	6.40%
FGRO	Fidelity Growth Opportunities ETF	5.57%
VCLD	Simplify Volt Cloud and Cybersecurity Disrup...	5.47%

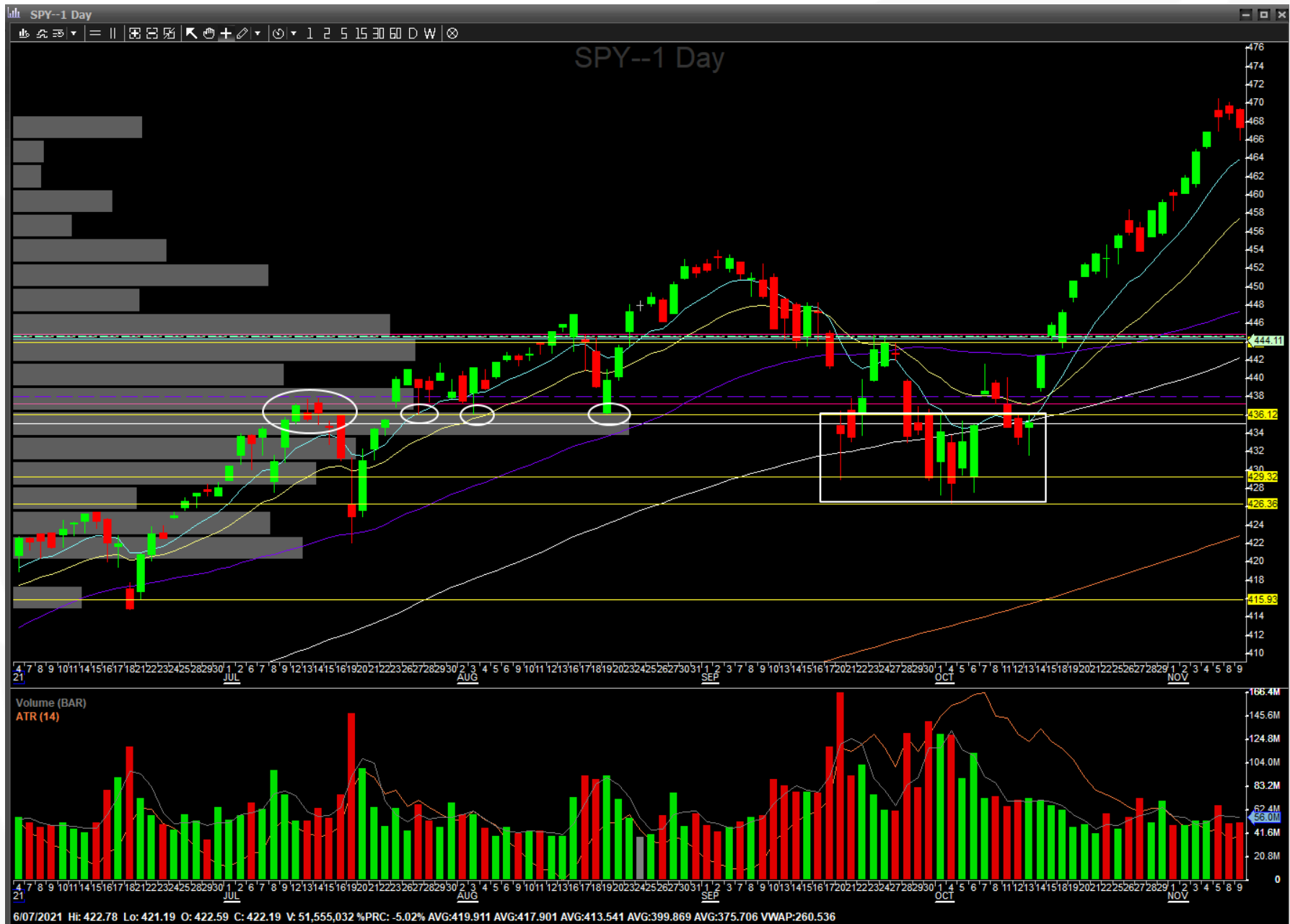
ETFs with the most FB shares

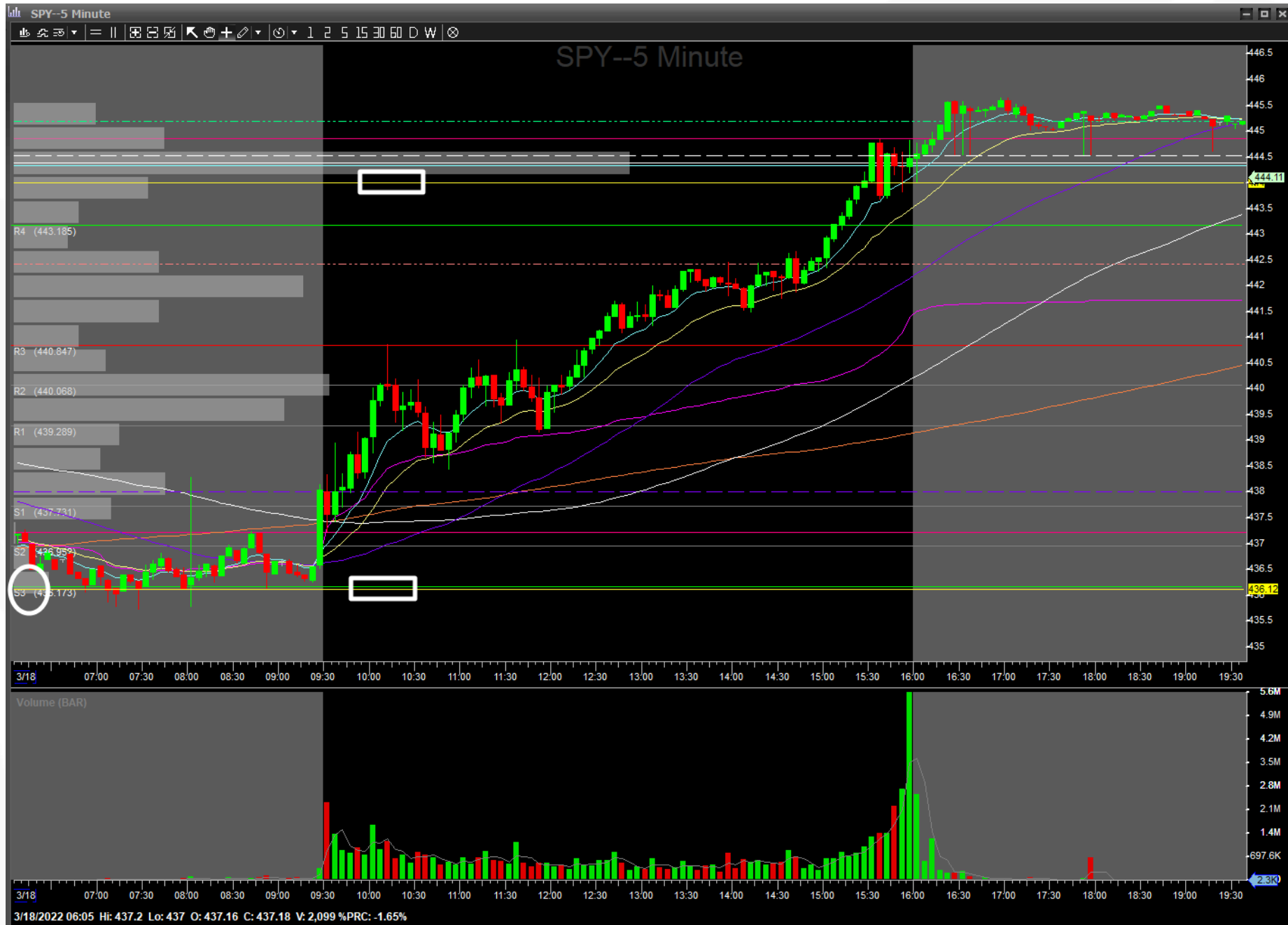
Ticker	Fund Name	# OF SHARES
QQQ	Invesco QQQ Trust	29.23M
SPY	SPDR S&P 500 ETF Trust	25.00M
IVV	iShares Core S&P 500 ETF	20.49M
VOO	Vanguard S&P 500 ETF	17.71M
VTI	Vanguard Total Stock Market ETF	14.93M

Top ETF Strategies using FB

ETF Strategy	# of ETFs
Active Management ETFs	99
Vanilla ETFs	53
Fundamental ETFs	35
Multi-factor ETFs	34
ESG ETFs	21

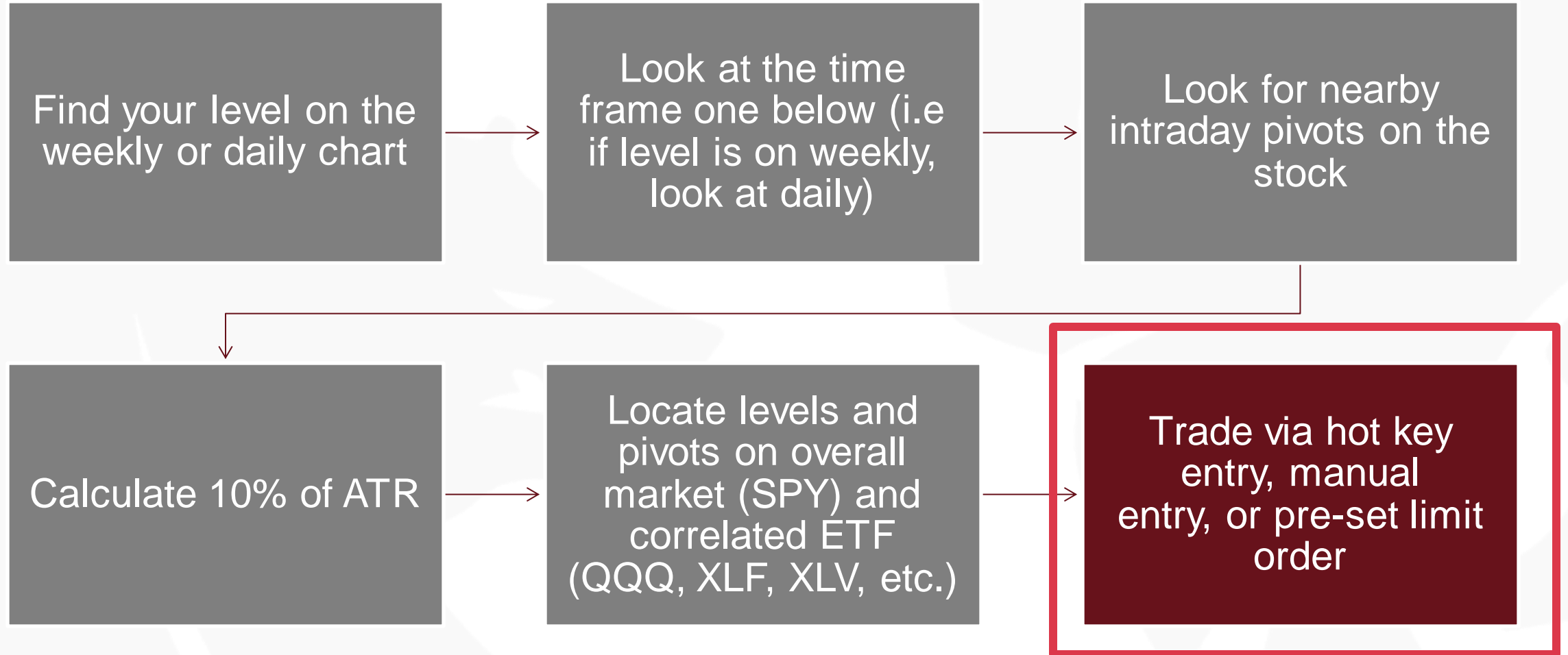




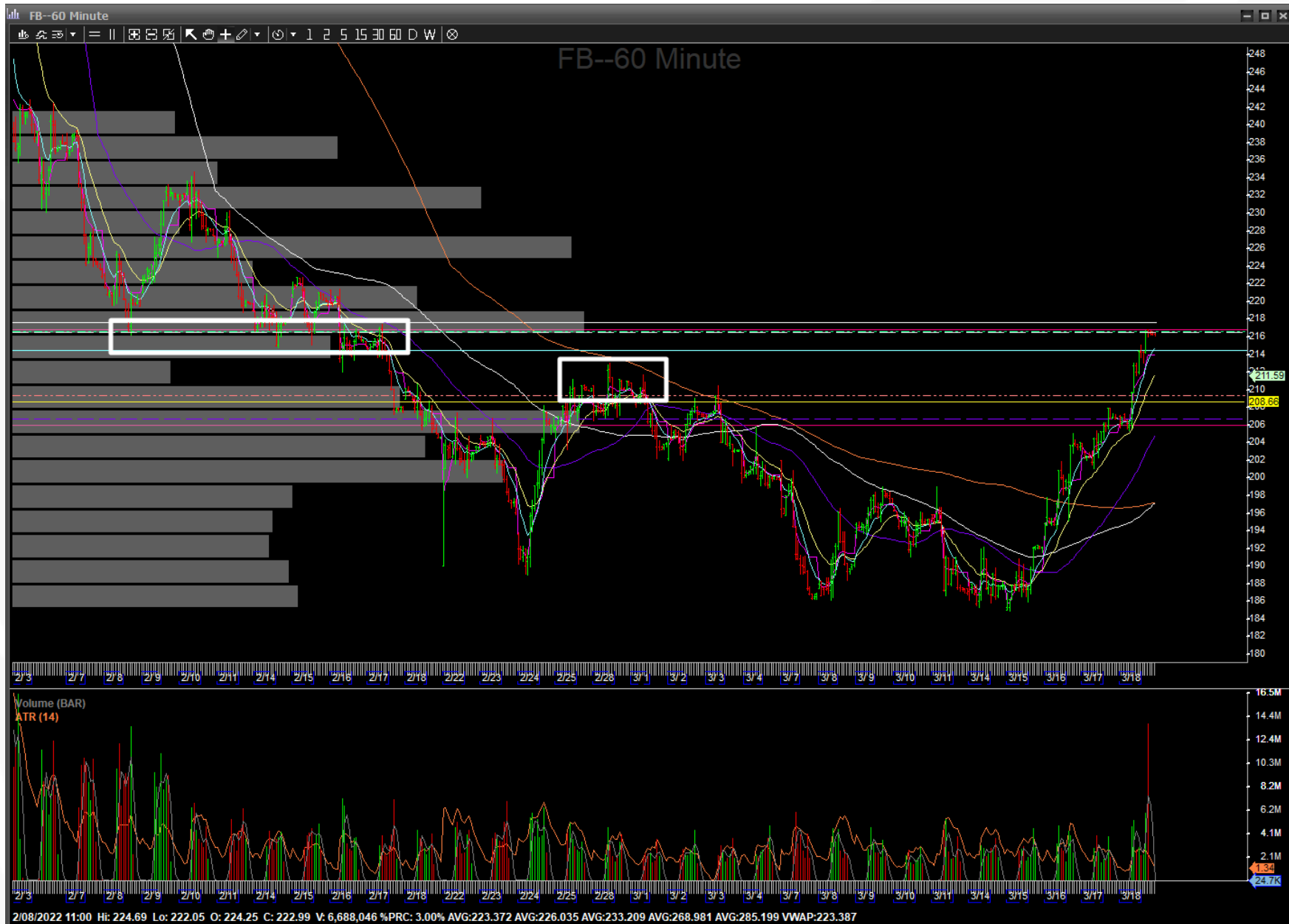


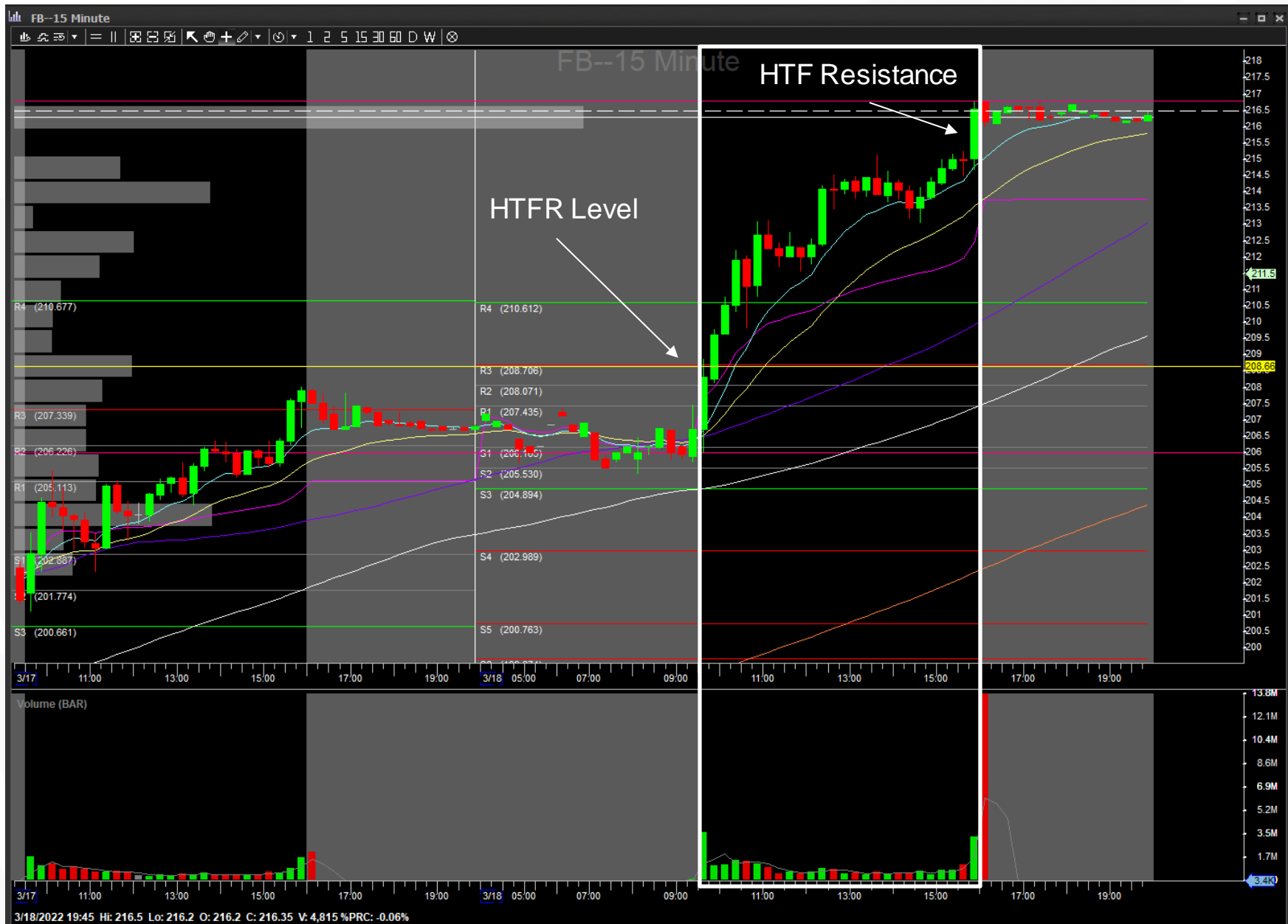


How To Trade Higher Time Frame Ranges

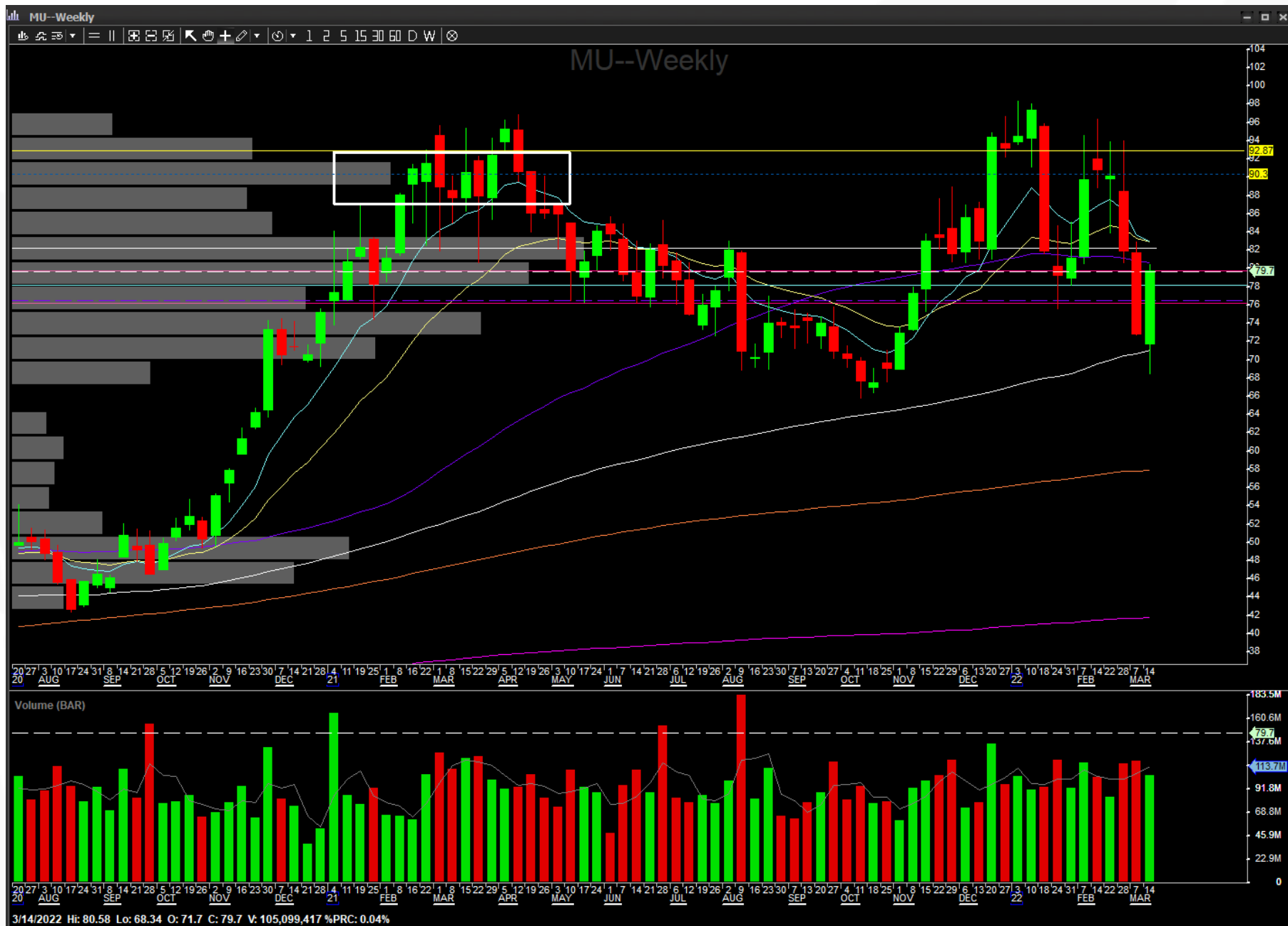




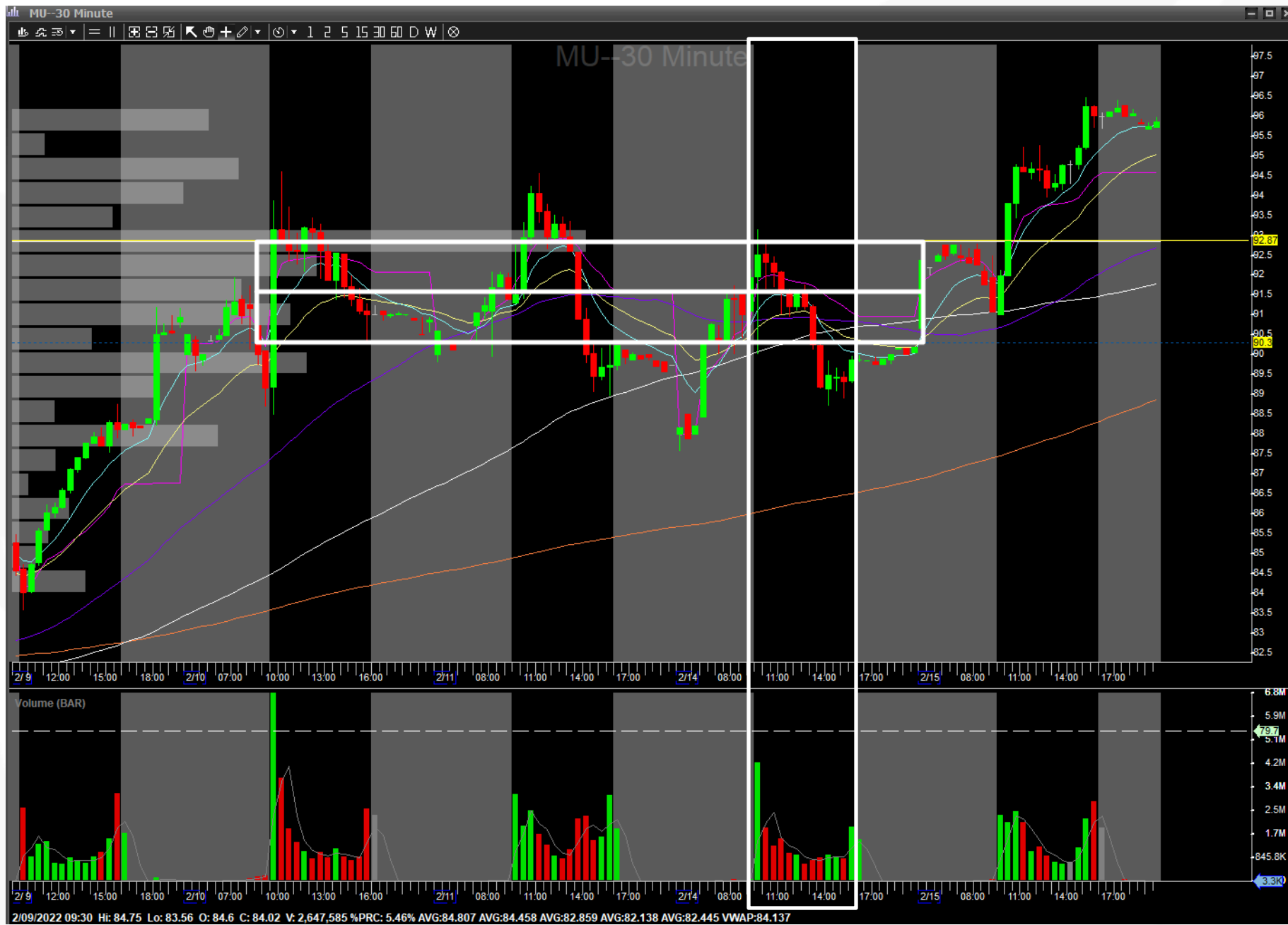


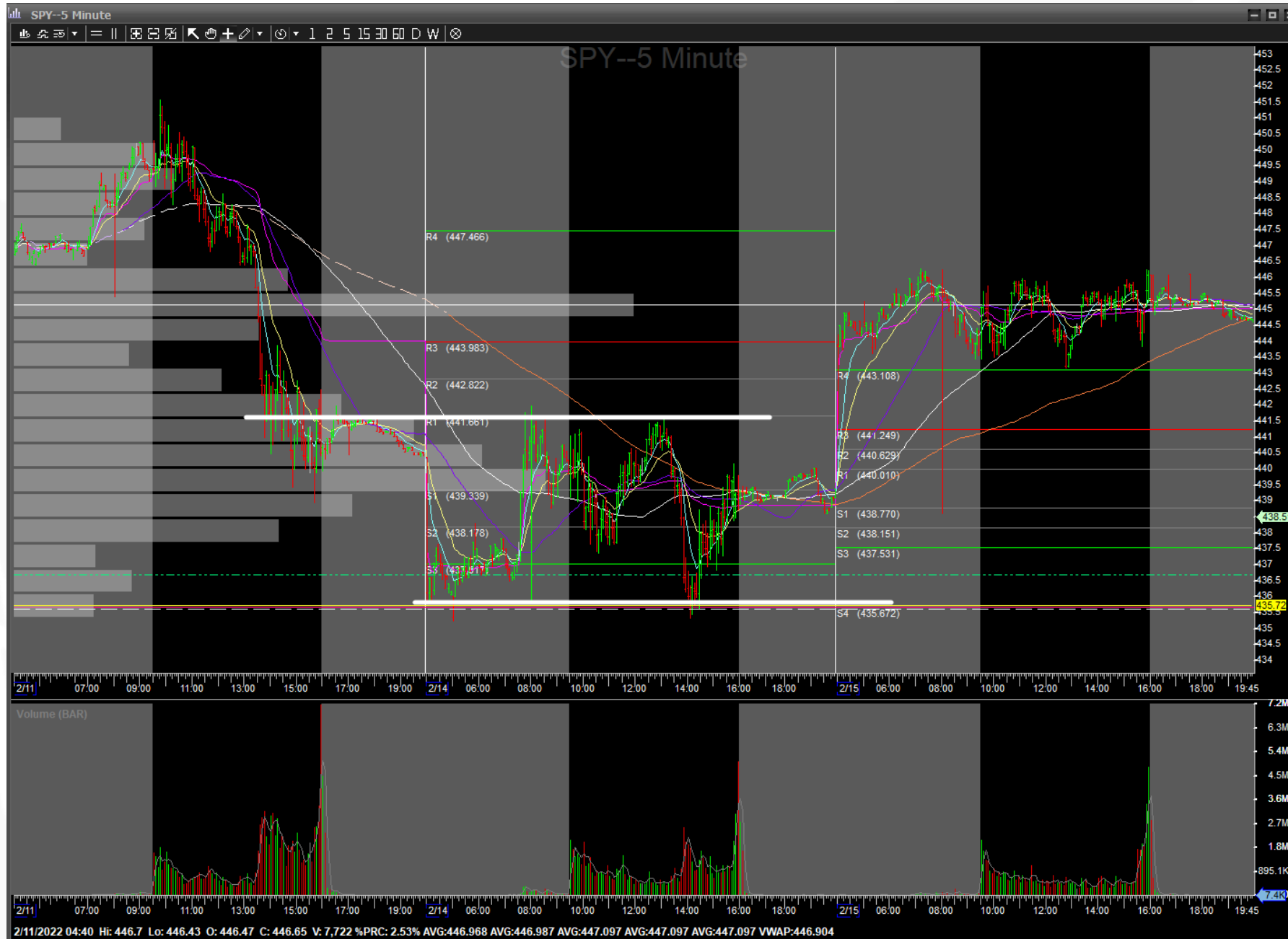


MU



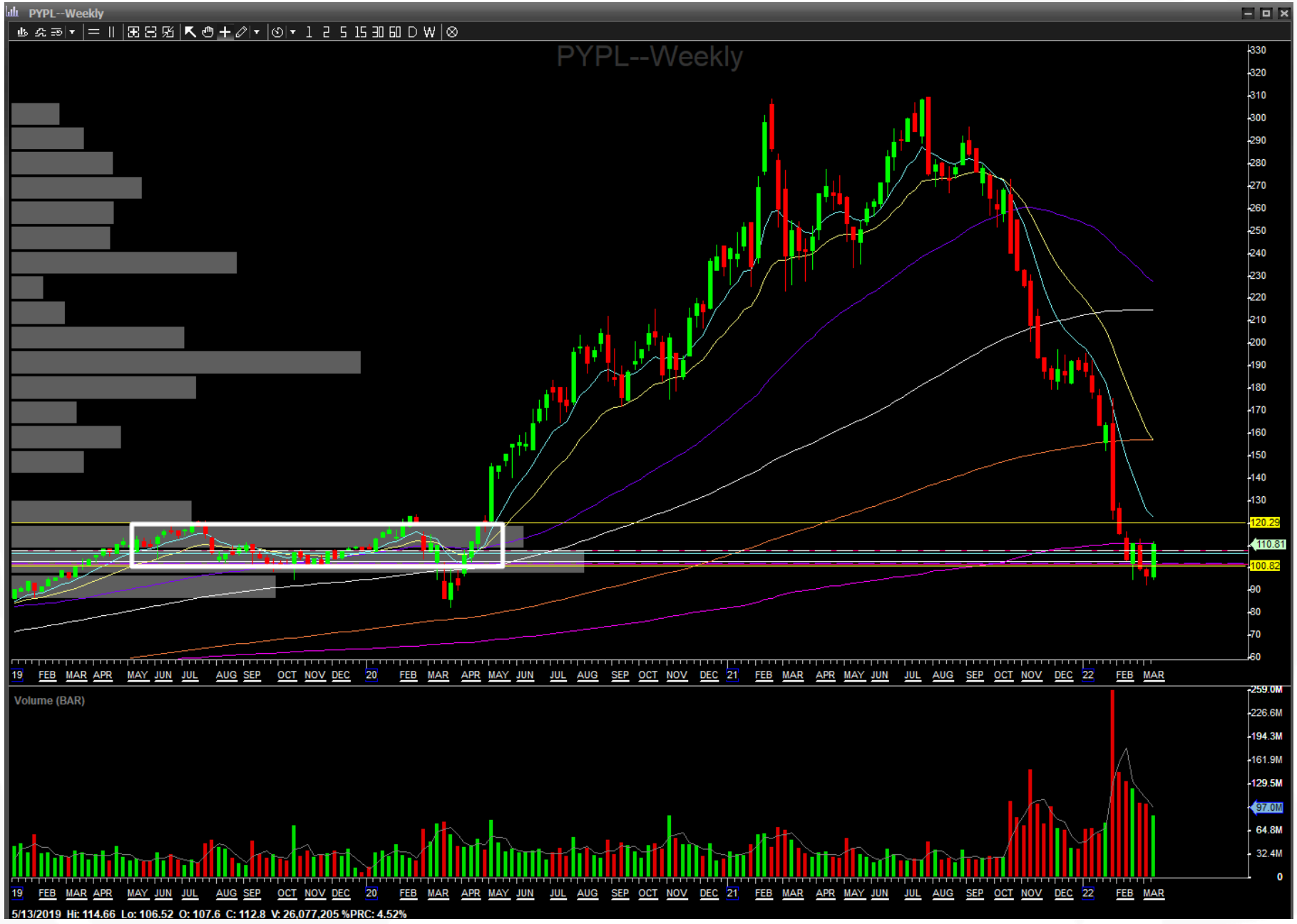


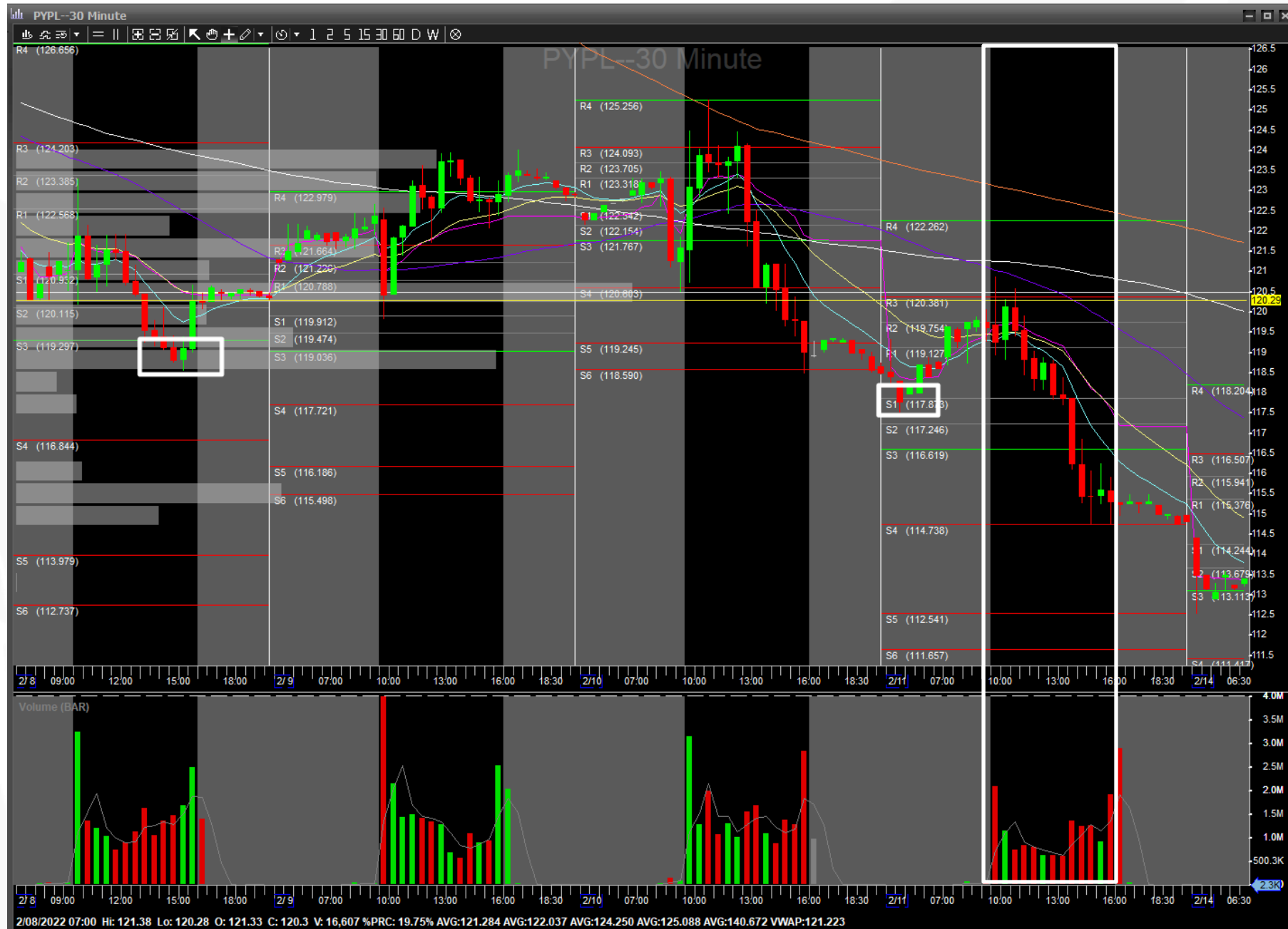




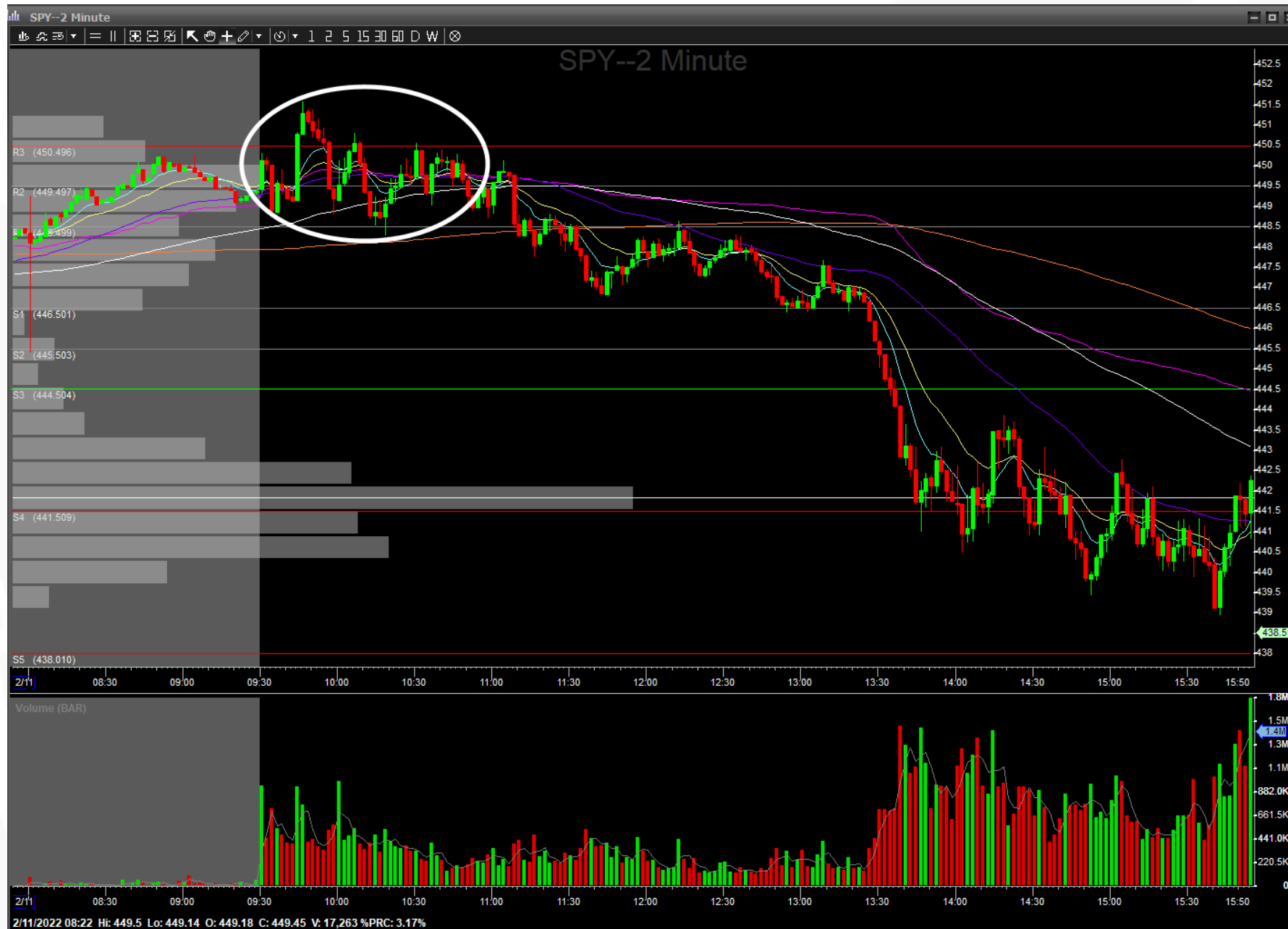


PYPL











Recap

- What is a higher time frame range (HTFR)?
- Why should I use a HTFR?
- How to spot a HTFR
- Using paired pivots for better RvR
- Using ATR for stops
- Holding for larger moves and where to take profit
- Using the market and correlated sector to time entries/exits



Q&A