



Setting Up Your Trading Desk

PRESENTED BY:

Mike B.

DISCLAIMER

BearBullTraders.com employees, contractors, shareholders and affiliates, are **NOT an investment advisory service, a registered investment advisor or a broker-dealer** and does not undertake to advise clients on which securities they should buy or sell for themselves.

You understand that **NO content published as part of the Bear Bull Trading Room and its Website constitutes a recommendation** that any particular investment, security, portfolio of securities, transaction or investment strategy is suitable for any specific person.

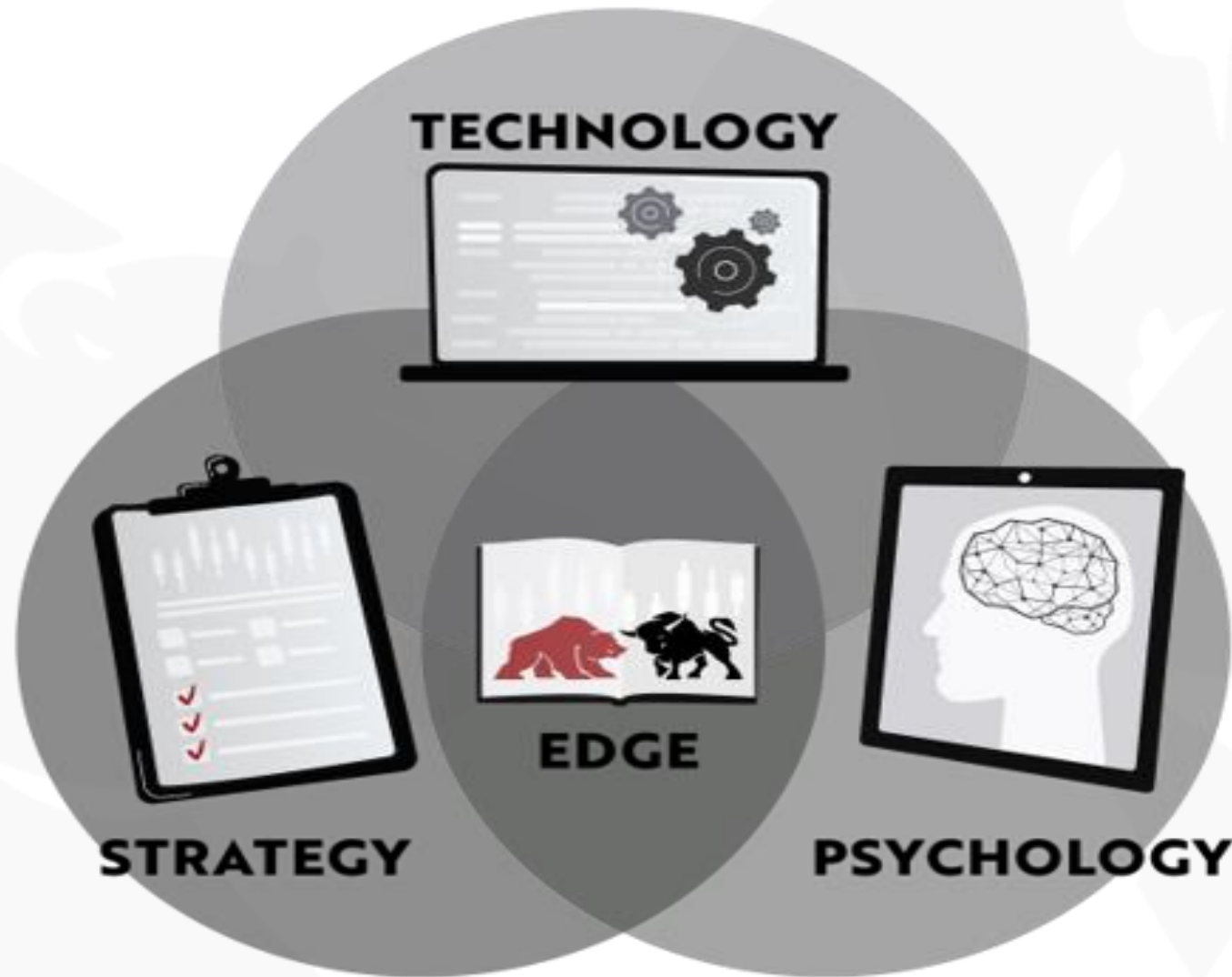
You further understand that **none of the creators or providers of our Services or their affiliates will advise you personally** concerning the nature, potential, value or suitability of any particular investment, security, portfolio of securities, transaction, investment strategy or other matter.

Overview



- Pillars of Trading
- Essentials Lesson 1 Review
 - System Setup
 - Internet Connection
 - Trading Platform
 - Simulator
- Data Gathering Software
- Online Data Gathering Software
- Online Resources
- Computer Components & Setup



Pillars of Trading



Essentials Lesson 1 Review

Basic Setup	Advance Setup	Travel / Mobile Setup
 <p>OR</p>		
<ul style="list-style-type: none">• Good specs on computer or laptop.• At least two monitors recommended.• Basic accessories.	<ul style="list-style-type: none">• Powerful PC run several applications.• Strong graphics card that can support multiple monitors.• 3 or more monitors for platform, chatroom and scanners.• Stream deck or gaming pad for hotkey order execution.	<ul style="list-style-type: none">• Laptop with enough USB connections for accessories.• Portable monitors. (These can connect using USB.• Dedicated hotspot or cellphone with great connection like 5G.

Essentials Lesson 1 Review

Your internet connection needs to support your style of trading.

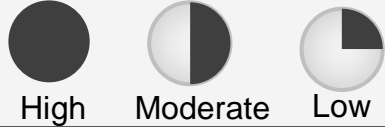
A fast and stable connection is important especially for active day traders.

Trading Style	Internet Speed
Day Trading	High Impact
Swing Trading / Long Term	Medium Impact
Investing	Low Impact

Slow speeds can have a significant impact on your executions and negatively affect your **Market Quotes, Order Execution & Fills.**

Essentials Lesson 1 Review

Legend



DAS



Thinkorswim



Interactive Brokers (TWS)



Robinhood



Speed and Execution	Ease of Use	Ideal for day trading	Recommended by BBT

Essentials Lesson 1 Review

You will likely not succeed without spending a **significant amount** of time in the simulator.

The simulator will help you sharpen your trading skills before putting any real money at risk.



Learn the Platform



**Read & Interpret
Market Data**



**Execution Accuracy
& Speed**




Test Strategies

We recommend at least 3 months in a simulator.

Online Data Gather Software

Overview Detailed Win vs Loss Days Drawdown Compare Tag Breakdown Advanced


 Report type: Aggregate P&L Per-trade average

P&L type: Gross Net \$ T R [Help](#)

Statistics

Total gain/loss:	\$9081.08	Largest gain:	\$1931.10 (show)
Average daily gain/loss:	\$825.55	Largest loss:	-\$1034.00 (show)
Average daily volume:	21389	Average per-share gain/loss:	\$0.08
Average winning trade:	\$632.20	Average trade gain/loss:	\$227.03
Average losing trade:	-\$380.73	Trade P&L standard deviation:	\$692.06
System Quality Number (SQN):	n/a	Probability of random chance:	2.2%
Kelly percentage:	35.91%	K-Ratio:	2.84
Total number of trades:	40	Profit factor:	2.49
Number of winning trades:	24 (60.0%)	Average hold time (winning trades):	11 minutes
Number of losing trades:	16 (40.0%)	Average hold time (losing trades):	2 minutes
Max consecutive wins:	6 (show)	Max consecutive losses:	4 (show)
Average position MFE:	\$17886.35	Average position MAE:	-\$3677.20
Total commissions:	\$1139.23	Total fees:	\$0.00

Select: Days/Times Price/Volume Instrument Market Behavior Win/Loss/Expectation Liquidity

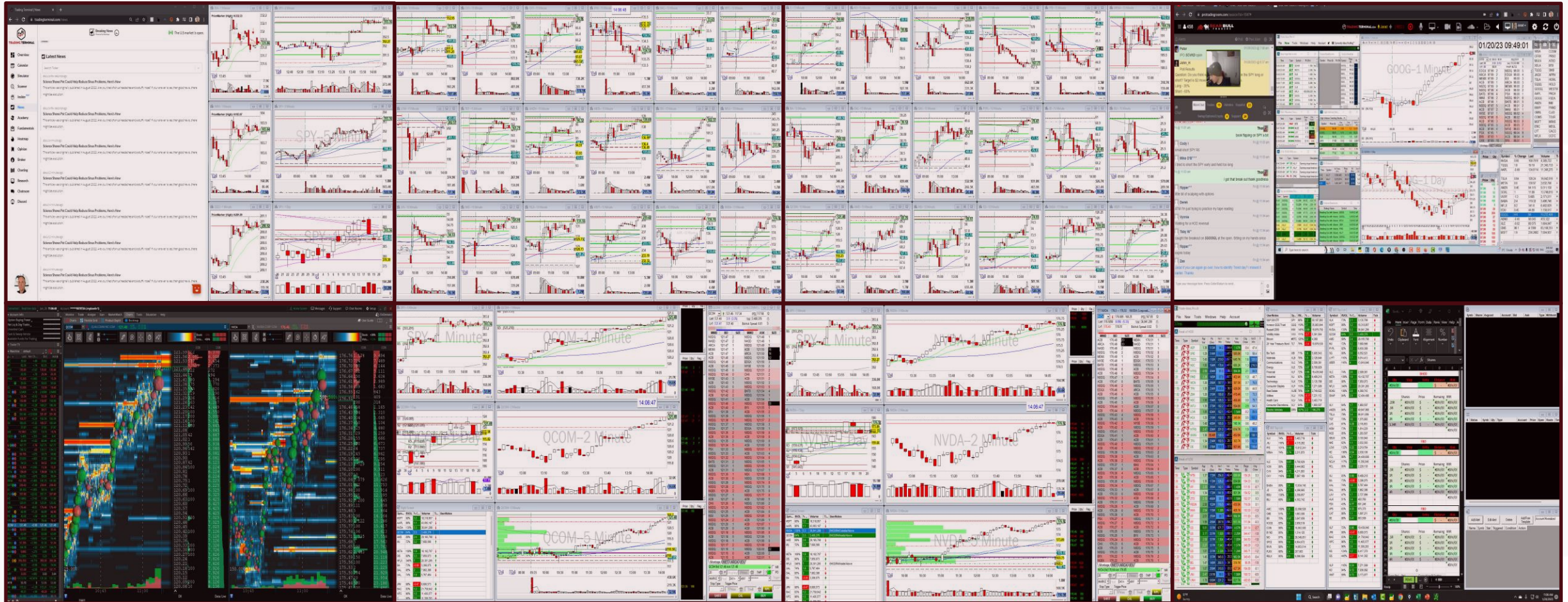
[Help](#) 

Computer Components & Setup



Computer Components & Setup

- How do I best utilize my screen space?



Computer Components & Setup



Computer Components & Setup

The screenshot displays a trading terminal interface with a news feed on the left and a grid of six technical analysis charts on the right. The news feed, titled "Latest News", features a search bar and a list of articles, all with the headline "Science Shows Pot Could Help Reduce Sinus Problems, Here's How". The right side of the terminal is divided into two columns and three rows of charts:

- Top Left Chart (DIA--1 Minute):** PriceMarker (High: H:332.33) showing price movement from 13:50 to 14:00. Current price is 331.89. Volume bars at the bottom show 5.9K and 2.5K.
- Top Right Chart (SPY--2 Minute):** Price movement from 12:40 to 14:00. Current price is 393.33. Volume bars show 546.8K, 273.4K, and 174.2K.
- Middle Left Chart (IWM--1 Minute):** PriceMarker (High: H:183.97) showing price movement from 13:50 to 14:00. Current price is 183.79. Volume bars show 103.3K and 51.6K.
- Middle Right Chart (SPY--5 Minute):** Price movement from 09:00 to 14:00. Current price is 393.33. Volume bars show 1.8M, 903.4K, and 318.6K.
- Bottom Left Chart (QQQ--1 Minute):** PriceMarker (High: H:281.09) showing price movement from 13:50 to 14:00. Current price is 280.82. Volume bars show 238.2K, 119.1K, and 38.4K.
- Bottom Right Chart (SPY--1 Day):** Price movement from 20 to 20. Current price is 393.33. Volume bars show 104.2M and 50.4M.

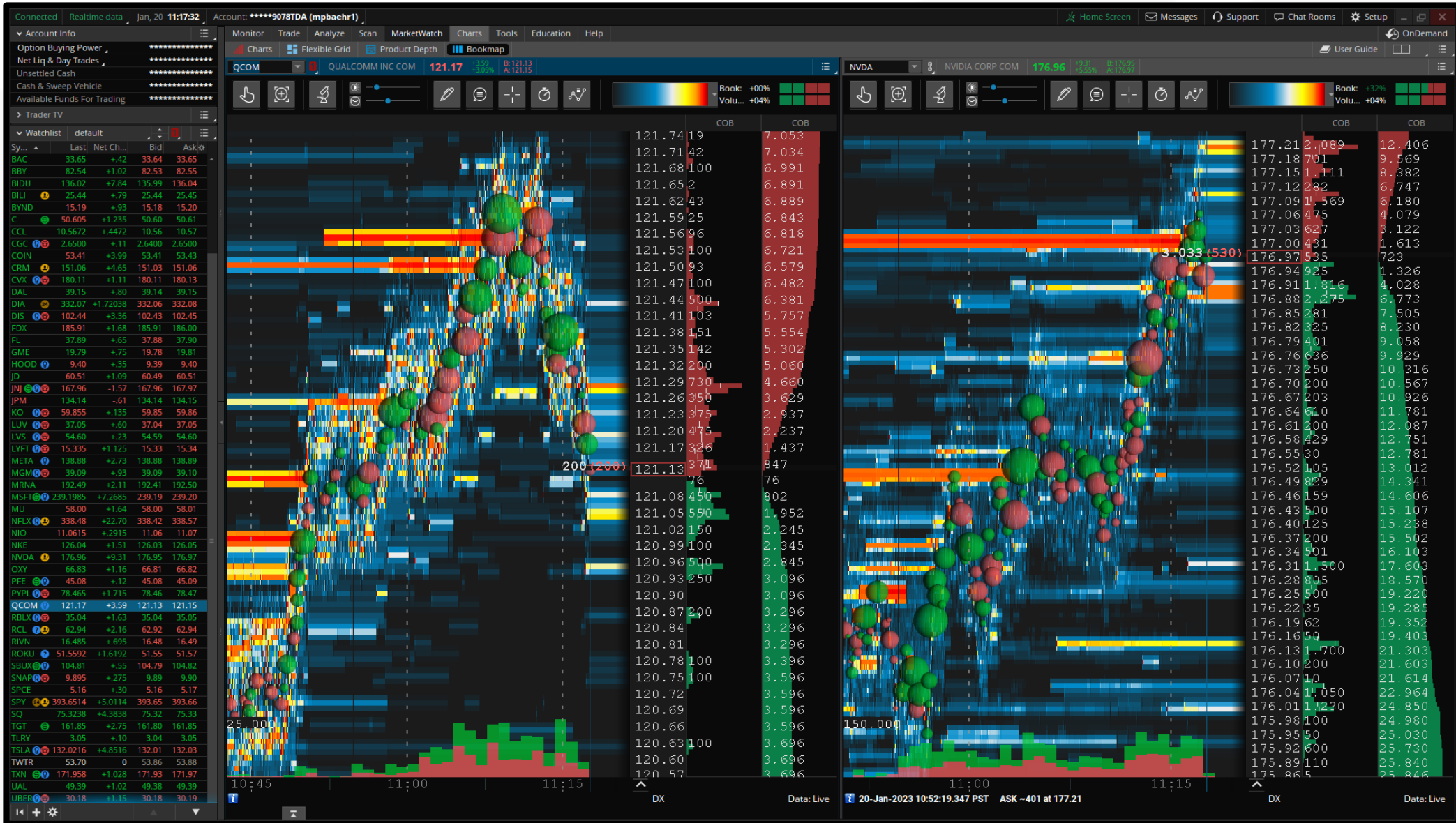
Computer Components & Setup

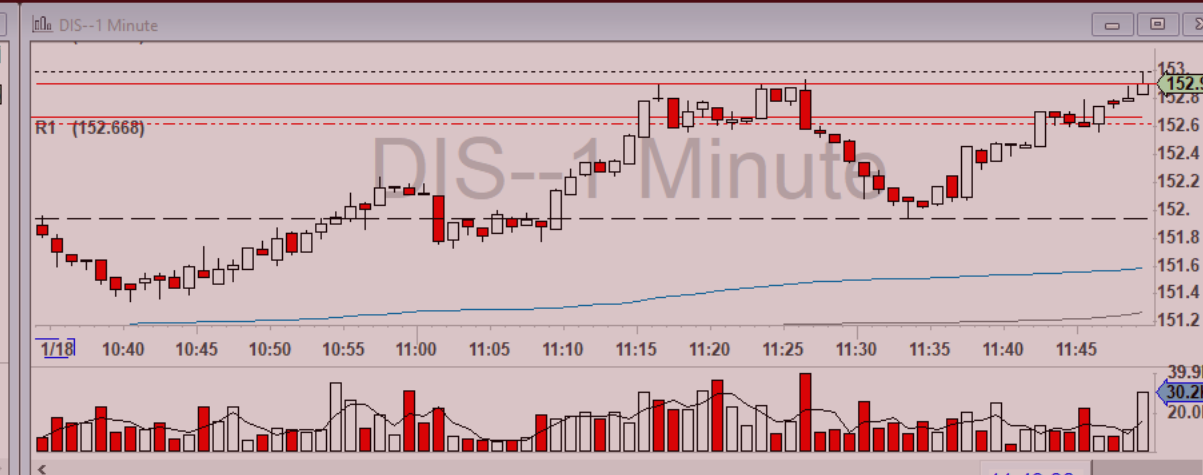
The screenshot displays a comprehensive trading workstation with several key components:

- Trade-Ideas Pro AI:** The main interface window showing a 'Break of HOD' (High of Day) chart and a 'Break of LOD' (Low of Day) chart. It features a grid of market data with columns for Time, Type, Symbol, Rel Vol, Fit (Shr), Vol 1 Min, Vol Today, Vol Today, Chg Close, and Vol 5 Min.
- Sectors:** A window listing various market sectors such as S&P 500 ETF, Invesco QQQ Trust, Russell 2000, Volatility Index, Bitcoin, and 20 Year Treasury Bond, along with their respective symbols, volume, and percentage change.
- BBT Top List 2:** A window displaying a list of top-performing stocks with columns for Symbol, RVOL, % C..., Volume, and Tick.
- Excel:** An Excel spreadsheet window showing a detailed order entry grid. The grid includes columns for Qty, Stop, Entry, Distance, Risk, Shares, Price, Remaining, and RRR. It is organized into sections for BHD, FBO, and FBO orders.
- Account Management:** A window at the bottom right showing account details, including Name, Symbol, Status, Triggered, Condition, and Action.

The Windows taskbar at the bottom shows the system tray with a temperature of 59°F, a search bar, and various application icons. The system clock indicates the time is 11:15 AM on 1/20/2023.

Computer Components & Setup





Price	Qty	Flag
152.9	2000	
152.95	1000	

DIS	152.9855 - 149.83	PCL 151.94	N
Last	152.9	0.96 [0.63%]	Vol 4,209,994
Lvl	152.89	152.91	Bid-Ask Spread: 0.02

MMID	BID	SIZE	MMID	ASK	SIZE
MEMX	152.89	1	MEMX	152.91	1
NSDQ	152.88	1	NASD	152.91	1
NSX	152.88	1	NSDQ	152.91	1
NASD	152.88	1	NYSE	152.93	1
NSDQ	152.87	1	NSDQ	152.93	0
BATS	152.87	1	BATS	152.94	3
EDGX	152.86	1	NSDQ	152.94	0
NYSE	152.86	1	NSDQ	152.95	4
NSDQ	152.86	0	EDGX	152.95	3
NSDQ	152.85	1	PSX	152.96	4
NSDQ	152.84	1	NSDQ	152.96	0
ACB	152.84	0	ACB	152.96	0
NSDQ	152.83	1	NSDQ	152.97	1
NSDQ	152.82	5	ACB	152.97	0
PSX	152.82	4	NSDQ	152.98	0
ACB	152.82	0	ACB	152.99	1
NSDQ	152.81	0	ARCA	152.99	1
NSDQ	152.80	0	NSDQ	152.99	0
BYX	152.79	1	NSDQ	153.00	13
NSDQ	152.79	0	MIAX	153.00	1
ACB	152.77	0	ACB	153.00	0
NSDQ	152.76	2	IEXG	153.00	0
EDGA	152.74	1	ACB	153.01	0
NSDQ	152.74	0	NSDQ	153.02	1
ACB	152.73	0	EDGA	153.02	1
NSDQ	152.71	0	NSDQ	153.03	0
NSDQ	152.70	7	BYX	153.04	1
NSDQ	152.69	0	NSDQ	153.06	2
ACB	152.69	0	ACB	153.06	0
NQBX	152.68	1	NSDQ	153.07	1
NSDQ	152.67	1	NQBX	153.08	1
NSDQ	152.66	0	NSDQ	153.08	0
ARCA	152.65	1	NSDQ	153.09	2
ACB	152.65	0	NSDQ	153.10	0
NSDQ	152.64	1	NSDQ	153.11	1
CHX	152.62	4	ACB	153.11	0
NSDQ	152.61	0	NSX	153.12	1
ACB	152.60	1	NSDQ	153.15	1
ACB	152.59	2	ACB	153.18	1
NSDQ	152.55	1	CHX	153.20	4
NSDQ	152.50	0	NSDQ	153.24	1
NSDQ	152.45	1	NSDQ	153.25	0
ACB	152.45	1	NSDQ	153.26	1
ACB	152.40	0	ACB	153.31	2
ACB	152.36	1	ACB	153.33	1
ACB	152.19	1	NSDQ	153.39	1
NSDQ	152.10	3	ACB	153.42	0
ACB	152.00	0	NSDQ	153.46	0
ACB	151.94	0	NSDQ	153.49	3
ACB	151.90	0	ACB	153.50	0
ACB	151.85	0	NSDQ	153.50	0
NSDQ	151.77	0	NSDQ	153.52	1
ACB	151.75	0	ACB	153.60	0
NSDQ	151.71	0	NSDQ	153.66	0
ACB	151.70	0	AMEX	153.68	1

Price	Qty	Flag
152.9	13	I
152.91	1	I
152.9	2000	
152.91	100	
152.87	100	
152.89	12	F
152.88	100	
152.88	50	I
152.88	45	I
152.88	2	I
152.89	1	I
152.89	41	I



Center Screen

Sy...	RV...	% C...	Volume	Tick	UserNotes
SPY	112%	-1.4	38,772,705	↓	
BA	111%	0.16	4,604,717	↓	BHOD/R5/Inside/Above
DIS	94%	0.63	4,209,994	↑	
JPM	226%	-3.7	13,556,226	↓	
AAPL	87%	-1.2	34,528,071	↓	
AMD	93%	-1.4	24,750,918	↓	
NVDA	97%	-1.9	18,697,528	↑	
FB	137%	-3.2	10,677,241	↓	
QCOM	97%	-2.1	3,423,619	↓	BHOD/R3/Inside/Below
TSLA	92%	-0.08	10,592,890	↓	
MSFT	132%	-1.3	17,378,574	↓	
BABA	129%	-1.1	13,833,878	↓	
BIDU	99%	0.33	1,395,249	↑	
EA	585%	5.4	5,070,881	↓	
LUV	71%	-0.26	2,679,033	↑	



Price	Qty	Flag
152.9	2000	
152.91	100	
152.87	100	
152.88	100	
152.86	100	F
152.86	100	F
152.86	102	F
152.86	100	F
152.83	100	
152.87	100	F
152.88	100	F
152.89	100	F
152.9	100	F
152.9	100	F
152.92	100	F
152.84	188	F
152.85	144	F
152.86	100	F

Montage \INET \ARCA \IEX

DIS Bid: 152.9 Ask: 152.93

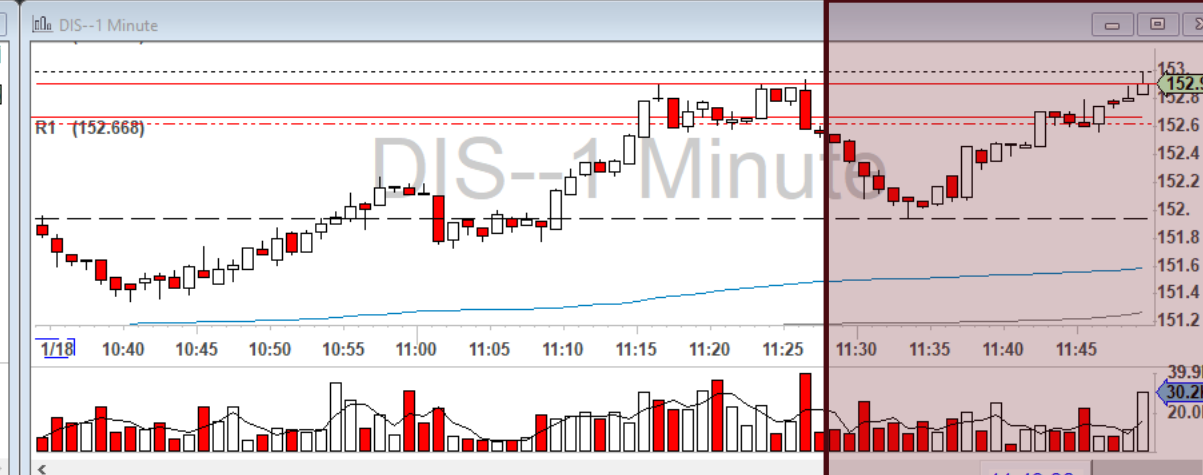
200 P Display Price TMP ? PO

MARKE Pref DAY+ ANY Trigger

Stop Type Trigger Price

Limit 229.53 Trail RPL CAP

SHRT CXL BUY



DIS 152.89 -- 152.91 Walt Disney Com...

Price Qty Flag

152.9	2000	
152.95	1000	

DIS 152.9855 - 149.83 PCL 151.94 N

Last 152.9 [0.96 [0.63%] Vol 4,209,994

Lvl 152.89 152.91 Bid-Ask Spread: 0.02 \$

MMID	BID	SIZE	MMID	ASK	SIZE
MEMX	152.89	1	MEMX	152.91	1
NSDQ	152.88	1	NASD	152.91	1
NSX	152.88	1	NSDQ	152.91	1
NASD	152.88	1	NYSE	152.93	1
NSDQ	152.87	1	NSDQ	152.93	0
BATS	152.87	1	BATS	152.94	3
EDGX	152.86	1	NSDQ	152.94	0
NYSE	152.86	1	NSDQ	152.95	4
NSDQ	152.86	0	EDGX	152.95	3
NSDQ	152.85	1	PSX	152.96	4
NSDQ	152.84	1	NSDQ	152.96	0
ACB	152.84	0	ACB	152.96	0
NSDQ	152.83	1	NSDQ	152.97	1
NSDQ	152.82	5	ACB	152.97	0
PSX	152.82	4	NSDQ	152.98	0
ACB	152.82	0	ACB	152.99	1
NSDQ	152.81	0	ARCA	152.99	1
NSDQ	152.80	0	NSDQ	152.99	0

Price Qty Flag

152.9 13 I



Price Qty Flag

152.91 1 I

152.9 2000

152.91 100

152.87 100

152.89 12 F

152.88 100

152.88 50 I

152.88 45 I

152.88 2 I

152.89 1 I

152.89 41 I

MMID	BID	SIZE	MMID	ASK	SIZE
NSDQ	152.79	0	MIAX	153.00	1
ACB	152.77	0	ACB	153.00	0
NSDQ	152.76	2	IEXG	153.00	0
EDGA	152.74	1	ACB	153.01	0
NSDQ	152.74	0	NSDQ	153.02	1
ACB	152.73	0	EDGA	153.02	1
NSDQ	152.71	0	NSDQ	153.03	0
NSDQ	152.70	7	BYX	153.04	1
NSDQ	152.69	0	NSDQ	153.06	2
ACB	152.69	0	ACB	153.06	0
NQBX	152.68	1	NSDQ	153.07	1
NSDQ	152.67	1	NQBX	153.08	1
NSDQ	152.66	0	NSDQ	153.08	0
ARCA	152.65	1	NSDQ	153.09	2
ACB	152.65	0	NSDQ	153.10	0
NSDQ	152.64	1	NSDQ	153.11	1
CHX	152.62	4	ACB	153.11	0
NSDQ	152.61	0	NSX	153.12	1
ACB	152.60	1	NSDQ	153.15	1
ACB	152.59	2	ACB	153.18	1
NSDQ	152.55	1	CHX	153.20	4
NSDQ	152.50	0	NSDQ	153.24	1
NSDQ	152.45	1	NSDQ	153.25	0
ACB	152.45	1	NSDQ	153.26	1
ACB	152.40	0	ACB	153.31	2
ACB	152.36	1	ACB	153.33	1
ACB	152.19	1	NSDQ	153.39	1
NSDQ	152.10	3	ACB	153.42	0
ACB	152.00	0	NSDQ	153.46	0
ACB	151.94	0	NSDQ	153.49	3
ACB	151.90	0	ACB	153.50	0
ACB	151.85	0	NSDQ	153.50	0
NSDQ	151.77	0	NSDQ	153.52	1
ACB	151.75	0	ACB	153.60	0
NSDQ	151.71	0	NSDQ	153.66	0
ACB	151.70	0	AMEX	153.68	1

Center Screen

Sy...	RV...	% C...	Volume	Tick	UserNotes
SPY	112%	-1.4	38,772,705	↓	
BA	111%	0.16	4,604,717	↓	BHOD/R5/Inside/Above
DIS	94%	0.63	4,209,994	↑	
JPM	226%	-3.7	13,556,226	↓	
AAPL	87%	-1.2	34,528,071	↓	
AMD	93%	-1.4	24,750,918	↓	
NVDA	97%	-1.9	18,697,528	↑	
FB	137%	-3.2	10,677,241	↓	
QCOM	97%	-2.1	3,423,619	↓	BHOD/R3/Inside/Below
TSLA	92%	-0.08	10,592,890	↓	
MSFT	132%	-1.3	17,378,574	↓	
BABA	129%	-1.1	13,833,878	↓	
BIDU	99%	0.33	1,395,249	↑	
EA	585%	5.4	5,070,881	↓	
LUV	71%	-0.26	2,679,033	↑	



Price Qty Flag

152.9 2000

152.91 100

152.87 100

152.88 100

152.86 100 F

152.86 100 F

152.86 102 F

152.86 100 F

152.83 100

152.87 100 F

152.88 100 F

152.89 100 F

152.9 100 F

152.9 100 F

152.92 100 F

152.84 188 F

152.85 144 F

152.86 100 F

Montage \INET\ARCA\IEX

DIS Bid: 152.9 Ask: 152.93

200 P Display Price TMP ? PO

MARKET Pref DAY+ ANY Trigger

Stop Type Trigger Price

Limit 229.53 Trail RPL CAP

SHRT CXL BUY



mike@bearbulltraders.com