

Additional examples of Level 2 signals:
Underlying large Asks: *Bullish*



Large Underlying Ask Order(s): Bullish

SPLK 156.75 -- 156.76 Splunk...	
Last	156.755
Vol	1,688,095
Bid-Ask Spread	0.01
NSDQ	156.750 9
MIAX	156.750 8
NYSE	156.750 8
NASD	156.750 8
EDGX	156.750 6
ARCA	156.750 4
BATS	156.750 3
AMEX	156.750 3
MEMX	156.750 2
PSX	156.750 2
ACB	156.750 2
EDGA	156.750 1
NSDQ	156.740 18
ACB	156.740 8
IEX	156.740 1
ACB	156.730 11
NSDQ	156.730 3
ACB	156.720 11
NSDQ	156.720 2
ACB	156.710 13
NSDQ	156.710 8
ACB	156.700 27
NSDQ	156.700 3
NSDQ	156.690 0
ACB	156.690 0
ACB	156.680 1
NSDQ	156.680 0
NSDQ	156.670 2
ACB	156.670 1
ACB	156.660 1
NSDQ	156.660 0
NSDQ	156.650 11
ACB	156.650 6
ACB	156.640 1
NSDQ	156.640 0
ACB	156.630 1
NSDQ	156.630 0
ACB	156.620 1
NSDQ	156.610 5
NSDQ	156.600 22
NSDQ	156.570 5
NSDQ	156.550 11
BYX	156.550 1
NSDQ	156.540 0
NSX	156.530 1
ACB	156.500 1
NSDQ	156.500 0
NSDQ	156.450 1
ACB	156.400 0
NSDQ	156.370 1
NSDQ	156.340 1
ACB	156.300 0
ACB	156.240 1
ACB	156.010 0
NSDQ	156.000 0
ACB	155.850 2
NSDQ	155.760 0

KRTX 329.72 -- 329.73 Karuna...	
Last	329.72
Vol	1,892,993
Bid-Ask Spread	0.01
NSDQ	329.720 7
NASD	329.720 6
PSX	329.720 6
MIAX	329.720 1
BATS	329.720 1
MEMX	329.720 1
ACB	329.720 0
NSDQ	329.710 28
ACB	329.710 10
ARCA	329.710 10
EDGX	329.710 1
NSX	329.710 1
ACB	329.700 52
NSDQ	329.700 14
EDGA	329.700 1
ACB	329.690 0
NSDQ	329.670 1
ACB	329.660 6
NSDQ	329.660 1
NSDQ	329.650 5
NSDQ	329.610 2
NSDQ	329.570 0
NSDQ	329.550 17
ACB	329.540 0
NSDQ	329.510 20
NSDQ	329.500 7
NSDQ	329.450 2
NSDQ	329.430 3
NSDQ	329.400 7
ACB	329.330 1
ACB	329.320 0
NSDQ	329.250 5
BYX	329.170 1
NOBX	329.130 1
NSDQ	329.100 5
NSDQ	329.090 1
NSDQ	329.000 0
NYSE	328.980 1
ACB	328.950 1
NSDQ	328.880 1
NSDQ	328.830 1
NSDQ	328.500 5
ACB	328.380 1
ACB	327.740 2
ACB	327.190 1
NSDQ	327.100 1
NSDQ	326.050 0
GSCO	325.400 2
NSDQ	325.000 0
NSDQ	324.770 1
NSDQ	323.170 1
ACB	323.160 1
CHX	323.070 4
NSDQ	323.000 0
ACB	322.500 0
GSCO	322.110 2
ACB	321.780 8
NSDQ	321.760 2

IBIT 41.4 -- 41.43 Shares of B...	
Last	41.41
Vol	1,042,743
Bid-Ask Spread	0.03
ARCA	41.400 77
ACB	41.400 74
NASD	41.400 8
MEMX	41.400 1
BATS	41.400 1
NSDQ	41.390 13
ACB	41.390 12
AMEX	41.390 3
EDGX	41.390 3
PSX	41.390 3
NSX	41.390 3
NOBX	41.390 3
EDGA	41.390 3
BYX	41.390 3
IEX	41.390 1
NSDQ	41.380 25
ACB	41.380 20
ACB	41.370 18
NSDQ	41.370 17
ACB	41.360 11
NSDQ	41.360 10
ACB	41.350 2
NSDQ	41.350 1
ACB	41.340 1
ACB	41.330 1
NSDQ	41.330 0
ACB	41.320 1
ACB	41.310 1
NSDQ	41.300 9
ACB	41.300 1
ACB	41.290 1
ACB	41.280 1
ACB	41.270 1
ACB	41.260 13
NSDQ	41.260 0
ACB	41.250 6
ACB	41.240 1
ACB	41.230 3
ACB	41.220 0
ACB	41.210 3
ACB	41.200 2
NSDQ	41.200 1
ACB	41.190 1
ACB	41.180 1
ACB	41.170 1
ACB	41.160 6
NSDQ	41.160 2
NSDQ	41.150 28
ACB	41.150 1
ACB	41.140 1
ACB	41.130 0
ACB	41.110 0
ACB	41.100 0
ACB	41.090 3
ACB	41.070 4
NSDQ	41.070 1
NSDQ	41.060 2

HOLO 7.71 -- 7.72 MicroClo...	
Last	7.71
Vol	1,616,567
Bid-Ask Spread	0.01
NASD	7.700 13
ACB	7.700 2
ARCA	7.700 2
ACB	7.670 0
NSDQ	7.660 2
ACB	7.660 0
ACB	7.650 2
NSDQ	7.650 1
ACB	7.620 3
NSDQ	7.620 1
ACB	7.610 7
NSDQ	7.610 0
NSDQ	7.600 11
ACB	7.600 9
NSDQ	7.590 4
NSDQ	7.580 0
ACB	7.570 0
ACB	7.560 1
NSDQ	7.550 1
NSDQ	7.540 1
EDGA	7.540 1
ACB	7.540 0
NSDQ	7.530 33
NSDQ	7.500 15
MEMX	7.500 2
BATS	7.500 1
ACB	7.490 2
ACB	7.480 3
NSDQ	7.480 0
ACB	7.470 1
NSDQ	7.470 0
ACB	7.460 0
ACB	7.450 3
NSDQ	7.450 0
ACB	7.440 1
ACB	7.430 20
NSDQ	7.430 3
ACB	7.420 1
NSDQ	7.410 1
BYX	7.410 1
ACB	7.400 23
NSDQ	7.400 1
ACB	7.390 2
NSDQ	7.360 1
ACB	7.360 0
NSDQ	7.350 2
NSDQ	7.330 1
ACB	7.330 0
ACB	7.320 8
NSDQ	7.320 1
ACB	7.300 11
NSDQ	7.300 1
ACB	7.280 0
NSDQ	7.280 0
ACB	7.270 20
ACB	7.250 2

PATH 25.36 -- 25.47 UiPath, I...	
Last	25.36
Vol	1,327,134
Bid-Ask Spread	0.11
ACB	25.360 2
ARCA	25.360 2
ACB	25.350 4
ACB	25.340 1
ACB	25.320 1
EDGX	25.320 1
NSDQ	25.320 1
ACB	25.310 0
NSDQ	25.300 0
ACB	25.290 0
NSDQ	25.290 0
ACB	25.280 2
NSDQ	25.280 1
ACB	25.280 1
NSDQ	25.260 1
ACB	25.250 30
NSDQ	25.250 5
ACB	25.210 10
BATS	25.190 2
ACB	25.160 0
NSDQ	25.100 5
ACB	25.100 0
NSDQ	25.090 0
ACB	25.070 0
NSDQ	25.060 1
NSDQ	25.050 1
ACB	25.010 6
EDGA	25.010 5
NSDQ	25.010 1
ACB	25.000 20
NSDQ	25.000 13
MEMX	25.000 2
ACB	24.990 0
ACB	24.980 1
ACB	24.970 0
NSDQ	24.950 5
ACB	24.950 0
NSDQ	24.940 2
ACB	24.900 1
NSDQ	24.900 0
ACB	24.890 0
NSDQ	24.880 2
ACB	24.880 0
NSDQ	24.860 0
ACB	24.850 1
NSDQ	24.800 3
NSDQ	24.800 2
NSDQ	24.780 2
NSDQ	24.780 1
NSDQ	24.740 2
ACB	24.720 0
ACB	24.700 0
NSDQ	24.690 1
ACB	24.690 0
ACB	24.680 0
NSDQ	24.660 0

AMD 191.84 -- 191.88 Advan...	
Last	191.86
Vol	27,524,289
Bid-Ask Spread	0.04
NSDQ	191.840 1
MIAX	191.840 1
NSDQ	191.840 1
NSDQ	191.830 0
NSDQ	191.820 0
ACB	191.810 1
NSDQ	191.810 1
BATS	191.810 1
ARCA	191.810 1
NSDQ	191.800 5
EDGX	191.800 5
MEMX	191.800 1
ACB	191.800 0
NSDQ	191.790 1
ACB	191.790 0
NSDQ	191.780 4
NYSE	191.780 2
NSDQ	191.770 1
ACB	191.770 0
NSDQ	191.760 2
ACB	191.760 0
NSDQ	191.750 1
AMEX	191.750 1
NSDQ	191.740 1
ACB	191.740 0
NSDQ	191.730 2
ACB	191.730 0
NSDQ	191.720 1
ACB	191.720 1
NSDQ	191.710 1
ACB	191.710 0
NSDQ	191.700 1
ACB	191.700 1
NSDQ	191.690 0
NSDQ	191.680 1
BYX	191.680 1
NSDQ	191.670 1
ACB	191.670 0
NSDQ	191.660 1
EDGA	191.660 1
NSDQ	191.650 0
ACB	191.650 0
ACB	191.630 0
NSDQ	191.620 5
ACB	191.620 0
NSDQ	191.610 0
NSDQ	191.610 0
NSDQ	191.600 2
ACB	191.600 0
ACB	191.590 0
PSX	191.580 2
NSDQ	191.580 0
ACB	191.570 0
NSDQ	191.570 0
NSDQ	191.560 5
ACB	191.560 0
NSDQ	191.550 0

Bids | Asks

Bids | Asks

Bids | Asks

Bids | Asks

Bids | Asks

Bids | Asks

Underlying Asks Ladder: Bullish

BABA 75.07 -- 75.16		Alibaba ...		PCL 76.39		N	
Last	75.1581	-1.232 (-1.6%)	Vol	356,401			
Lvl	75.07	75.16	Bid-Ask Spread: 0.09		S		
NSDQ	74.740	0	NSDQ	75.880	5		
ACB	74.740	0	NSDQ	75.910	1		
NSDQ	74.730	0	NSDQ	75.950	0		
NSDQ	74.710	4	ACB	75.980	3		
ACB	74.700	0	NSDQ	75.980	2		
NSDQ	74.680	1	ACB	75.990	5		
ACB	74.680	0	NSDQ	75.990	1		
NSDQ	74.660	3	ACB	76.000	65		
ACB	74.660	1	NSDQ	76.000	13		
ACB	74.650	0	NSDQ	76.100	1		
ACB	74.630	0	NSDQ	76.160	0		
NSDQ	74.630	0	ACB	76.190	5		
ACB	74.610	0	ACB	76.200	10		
NSDQ	74.600	10	NSDQ	76.200	1		
ACB	74.600	2	ACB	76.250	2		
ACB	74.590	0	NSDQ	76.300	2		
ACB	74.580	10	ACB	76.300	0		
ACB	74.560	0	ACB	76.320	0		
ACB	74.530	5	NSDQ	76.320	0		
ACB	74.520	0	ACB	76.340	0		
NSDQ	74.510	1	ACB	76.350	0		
ACB	74.510	0	NSDQ	76.360	0		
ACB	74.500	2	ACB	76.390	0		
NSDQ	74.500	2	NSDQ	76.390	0		
MEMX	74.500	1	NSDQ	76.400	8		
ACB	74.480	1	ACB	76.400	0		
ACB	74.460	0	NSDQ	76.490	1		
NSDQ	74.430	0	ACB	76.500	61		
NSDQ	74.420	0	NSDQ	76.500	0		
ACB	74.400	13	NSDQ	76.560	0		
NSDQ	74.380	1	ACB	76.600	0		
ACB	74.380	0	ACB	76.680	2		
NSDQ	74.350	3	NSDQ	76.700	0		
NSDQ	74.330	1	NSDQ	76.750	0		
NSDQ	74.320	0	ACB	76.850	0		
NSDQ	74.300	1	ACB	76.890	1		
ACB	74.300	0	ACB	76.930	0		
NSDQ	74.250	0	NSDQ	76.950	0		
ACB	74.250	0	NSDQ	76.960	1		
NSDQ	74.220	0	NSDQ	76.980	3		
ACB	74.210	0	ACB	76.980	3		
NSDQ	74.200	0	NSDQ	76.990	1		
ACB	74.140	1	NSDQ	77.000	238		
ACB	74.120	5	ACB	77.000	81		
NSDQ	74.120	4	MIAX	77.000	6		
NSDQ	74.110	2	NSDQ	77.050	1		
ACB	74.100	4	ACB	77.100	1		
NSDQ	74.100	3	ACB	77.110	0		
NSDQ	74.040	0	ACB	77.130	0		
ACB	74.020	1	ACB	77.200	0		
ACB	74.010	1	ACB	77.210	0		
NSDQ	74.010	3	ACB	77.220	0		
NSDQ	74.000	3	ACB	77.230	0		
ACB	74.000	3	ACB	77.250	0		
NSDQ	73.900	1	NSDQ	77.250	0		
ACB	73.810	2	NSDQ	77.280	1		
NSDQ	73.800	3	ACB	77.290	0		
ACR	73.800	1	NSDQ	77.300	0		

Bids | Asks

GCT 38.1 -- 38.43		GigaCloud ...		PCL 34.99		Q	
Last	38.13	3.14 (9%)	Vol	799,375			
Lvl	38.1	38.43	Bid-Ask Spread: 0.33		S		
NSDQ	38.100	10	EDGX	38.430	23		
NSDQ	38.100	10	MIAX	38.430	2		
MEMX	38.100	1	MEMX	38.430	1		
BATS	38.070	4	NSDQ	38.430	1		
ARCA	38.050	1	NSDQ	38.430	1		
ACB	38.050	1	ARCA	38.500	2		
NSDQ	38.040	1	ACB	38.500	2		
NYSE	38.040	1	NSDQ	38.500	0		
NSDQ	38.020	0	BATS	38.570	1		
ACB	38.010	2	BYX	38.700	1		
NSDQ	38.000	35	ACB	38.710	2		
EDGX	38.000	25	NSDQ	38.710	1		
ACB	38.000	3	NSDQ	38.800	10		
NSDQ	37.990	2	ACB	38.980	1		
NSDQ	37.930	4	NSDQ	39.000	31		
NSDQ	37.900	0	ACB	39.180	0		
NSDQ	37.800	1	ACB	39.200	2		
NSDQ	37.770	0	NSDQ	39.290	1		
ACB	37.770	0	NSDQ	39.360	0		
ACB	37.750	1	NSDQ	39.400	0		
ACB	37.740	0	NSDQ	39.410	0		
ACB	37.690	1	NSDQ	39.450	1		
ACB	37.650	1	NSDQ	39.500	223		
NSDQ	37.600	1	ACB	39.500	218		
NSDQ	37.580	0	NSDQ	39.550	6		
ACB	37.580	0	NSDQ	39.660	0		
ACB	37.520	0	NSDQ	39.670	0		
ACB	37.510	0	ACB	39.670	0		
ACB	37.500	11	ACB	39.700	2		
NSDQ	37.500	4	NSDQ	39.700	0		
ACB	37.470	0	NSDQ	39.750	0		
ACB	37.410	0	NSDQ	39.760	0		
NSDQ	37.400	2	ACB	39.810	1		
ACB	37.320	1	NSDQ	39.870	5		
NSDQ	37.320	0	NSDQ	39.890	0		
NSDQ	37.250	2	NSDQ	39.900	0		
ACB	37.250	0	UBSS	39.900	1		
ACB	37.230	0	NSDQ	39.950	1		
NSDQ	37.220	0	NYSE	39.950	1		
ACB	37.210	0	NSDQ	39.960	2		
ACB	37.200	0	NSDQ	39.970	6		
NSDQ	37.100	2	UBSS	39.990	0		
NSDQ	37.030	1	NSDQ	40.000	99		
NSDQ	37.020	15	UBSS	40.000	8		
NSDQ	37.010	0	ACB	40.000	3		
NSDQ	37.000	13	NSDQ	40.100	200		
ACB	37.000	2	ACB	40.100	0		
NSDQ	36.950	0	NSDQ	40.110	12		
NSDQ	36.930	1	NSDQ	40.170	40		
EDGA	36.930	1	NSDQ	40.180	1		
NSDQ	36.920	0	NSDQ	40.200	1		
NSDQ	36.860	1	ACB	40.200	0		
ACB	36.850	2	UBSS	40.220	4		
ACB	36.840	2	UBSS	40.250	1		
NSDQ	36.830	0	NSDQ	40.250	0		
BYX	36.820	1	XGWD	40.280	1		
ACB	36.800	2	ACB	40.280	1		
NSDQ	36.800	0	NSDQ	40.290	11		

Bids | Asks

LI 35.6 -- 35.67		Li Auto Inc. ...		PCL 37.77		Q	
Last	35.65	-2.12 (-5.6%)	Vol	583,271			
Lvl	35.6	35.67	Bid-Ask Spread: 0.07		S		
MEMX	35.600	100	ACB	35.670	2		
ACB	35.600	16	ARCA	35.670	2		
ARCA	35.600	16	NSDQ	35.670	1		
NSDQ	35.600	8	NSDQ	35.670	1		
NSDQ	35.600	8	ACB	35.680	1		
BATS	35.600	4	NSDQ	35.700	1		
EDGX	35.600	2	ACB	35.700	1		
ACB	35.570	0	ACB	35.710	1		
ACB	35.560	0	ACB	35.720	1		
ACB	35.550	5	NSDQ	35.720	1		
NSDQ	35.550	1	EDGX	35.720	1		
ACB	35.540	1	ACB	35.760	10		
ACB	35.530	0	MEMX	35.790	4		
ACB	35.520	1	BATS	35.800	1		
NSDQ	35.520	0	ACB	35.800	1		
ACB	35.510	3	ACB	35.980	1		
NSDQ	35.510	2	ACB	36.000	7		
NSDQ	35.500	18	EDGA	36.030	1		
ACB	35.500	8	NSDQ	36.080	0		
ACB	35.490	0	ACB	36.100	0		
ACB	35.480	0	ACB	36.200	3		
NSDQ	35.470	0	NSDQ	36.200	0		
ACB	35.450	0	ACB	36.280	50		
ACB	35.430	3	NSDQ	36.280	2		
ACB	35.400	3	ACB	36.400	0		
ACB	35.380	0	NSDQ	36.480	50		
ACB	35.350	0	ACB	36.500	2		
NSDQ	35.300	5	NSDQ	36.600	50		
ACB	35.300	0	ACB	36.600	20		
ACB	35.290	1	ACB	36.710	1		
NSDQ	35.250	1	ACB	36.790	3		
ACB	35.250	0	ACB	36.860	0		
NSDQ	35.230	1	ACB	36.950	0		
ACB	35.220	0	NSDQ	36.980	15		
ACB	35.200	1	ACB	36.990	1		
ACB	35.180	23	ACB	37.000	7		
NSDQ	35.180	19	NSDQ	37.000	0		
ACB	35.110	0	ACB	37.150	0		
NSDQ	35.100	6	BYX	37.450	1		
ACB	35.100	5	ACB	37.490	0		
ACB	35.090	9	ACB	37.500	6		
NSDQ	35.090	9	ACB	37.670	2		
ACB	35.070	0	ACB	37.700	5		
NSDQ	35.060	1	ACB	37.750	0		
ACB	35.050	0	ACB	37.770	0		
ACB	35.030	1	ACB	37.870	12		
ACB	35.020	1	NSDQ	37.900	7		
ACB	35.010	4	ACB	37.900	1		
ACB	35.000	40	NSDQ	37.910	4		
NSDQ	35.000	16	ACB	37.910	0		
ACB	34.990	0	ACB	37.920	0		
ACB	34.960	0	ACB	37.980	7		
ACB	34.950	0	NSDQ	37.990	0		
NSDQ	34.940	0	ACB	38.000	1		
NSDQ	34.910	10	NSDQ	38.000	0		
ACB	34.900	0	ACB	38.010	5		
NSDQ	34.900	0	ACB	38.180	1		
ACR	34.840	0	ACB	38.250	2		

Bids | Asks

RILY 15.15 -- 15.28		B. Riley Fi...		PCL 17.58		Q	
Last	15.1681	-2.412 (-13.7%)	Vol	583,271			
Lvl	15.15	15.28	Bid-Ask Spread: 0.13		HTB		
ACB	15.220	0	ACB	15.340	0		
ACB	15.210	0	ACB	15.390	0		
ACB	15.200	0	ACB	15.400	21		
ACB	15.160	0	ARCA	15.400	21		
ARCA	15.150	3	ACB	15.420	1		
ACB	15.150	2	EDGX	15.450	1		
ACB	15.130	0	ACB	15.490	0		
ACB	15.120	0	ACB	15.500	4		
NSDQ	15.120	0	NSDQ	15.500	3		
ACB	15.110	0	NSDQ	15.500	3		
EDGX	15.100	3	ACB	15.740	0		
ACB	15						

Example on AMD on 06/09/2023: **Bullish** price due to higher large Asks.

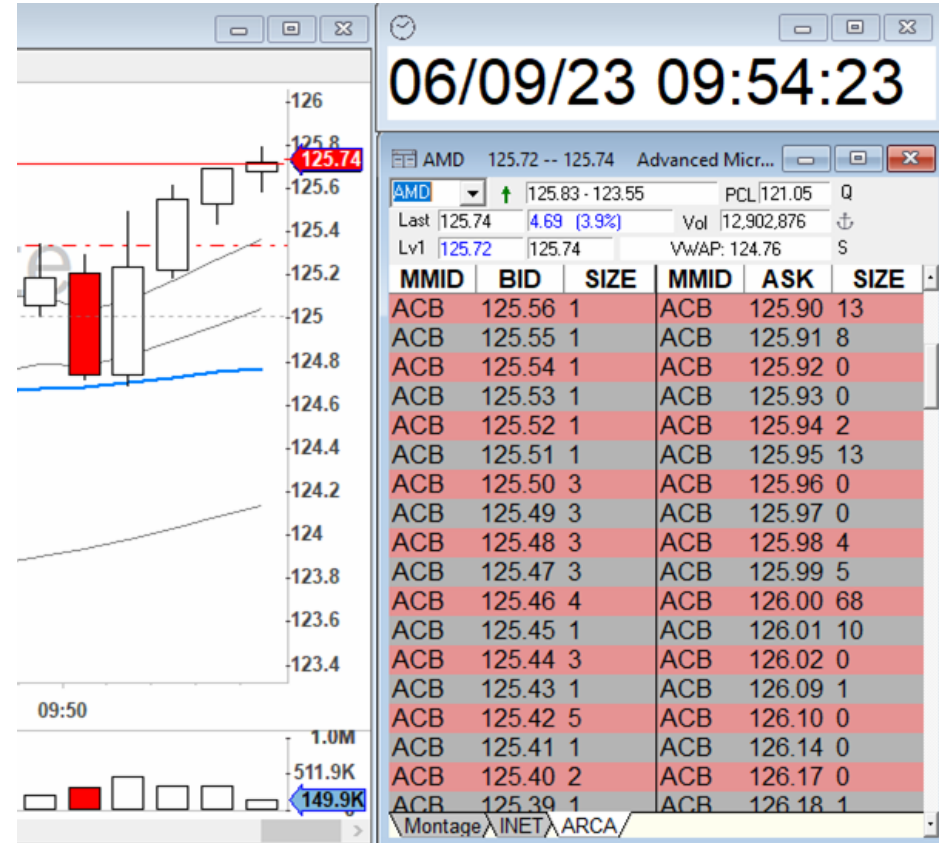
Current price is at **\$125.6042**



There is a large **Underlying Ask** at \$125.63.



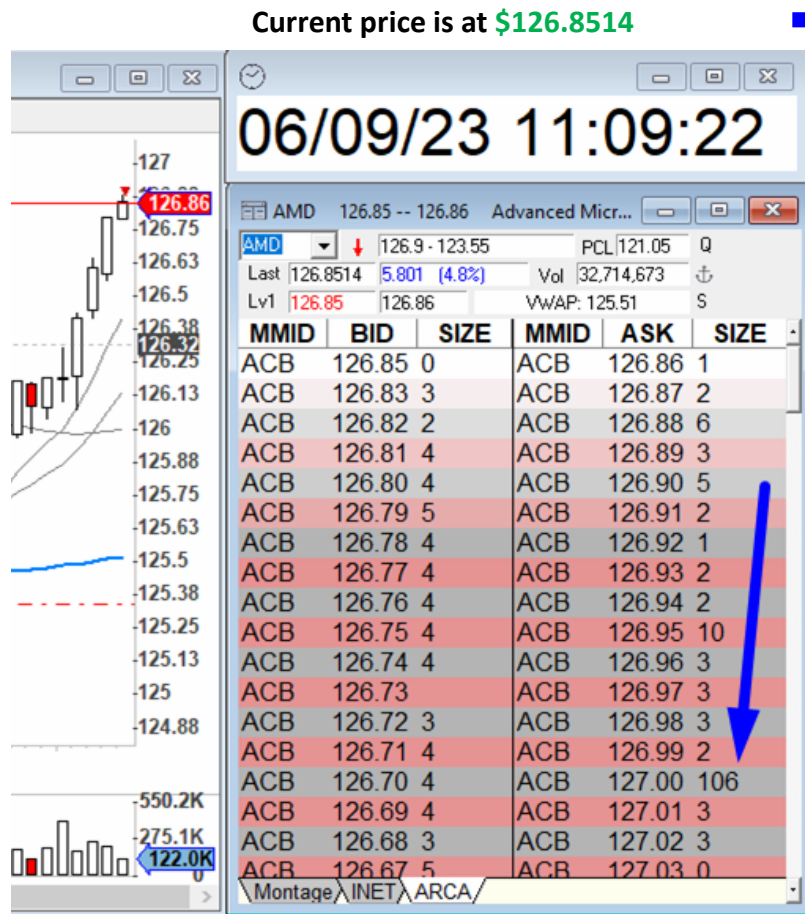
Current price is at **\$125.74**



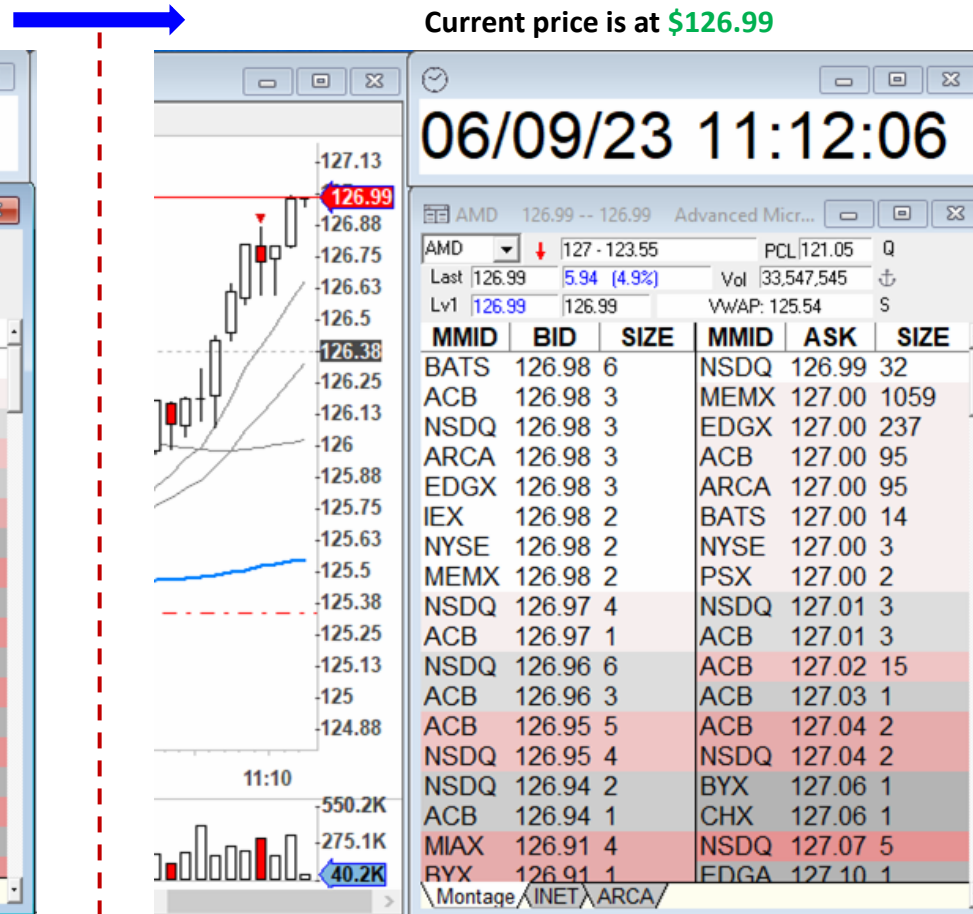
Price blasted through previously seen **Underlying Ask**.

There are additional large **Underlying Asks** at \$126.00 and \$126.01.

Example on AMD on 06/09/2023: **Bullish** price due to higher large Asks.



There is a large **Underlying Ask** at \$127.



Price climbed up towards the **Underlying Ask**.

Example on AMD on 06/13/2023: **Bullish** price due to higher large Asks.

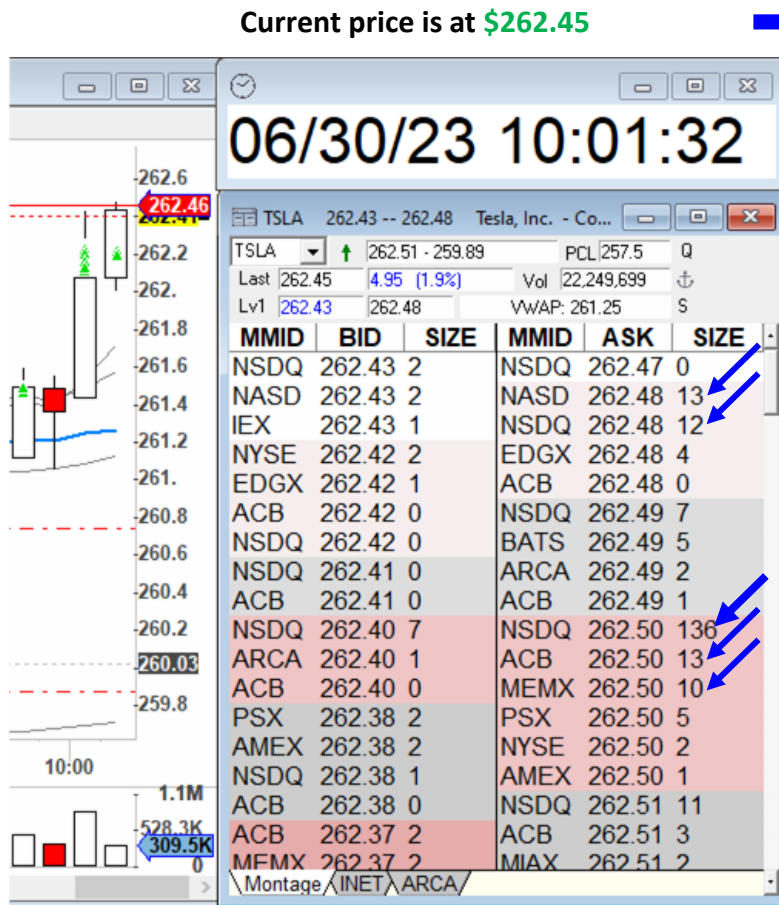


Large **Immediate Asks** at \$127.25 that do not show bearish stacking behavior. (They are not stepping down).

There is also a large **Underlying Ask** at \$127.29.

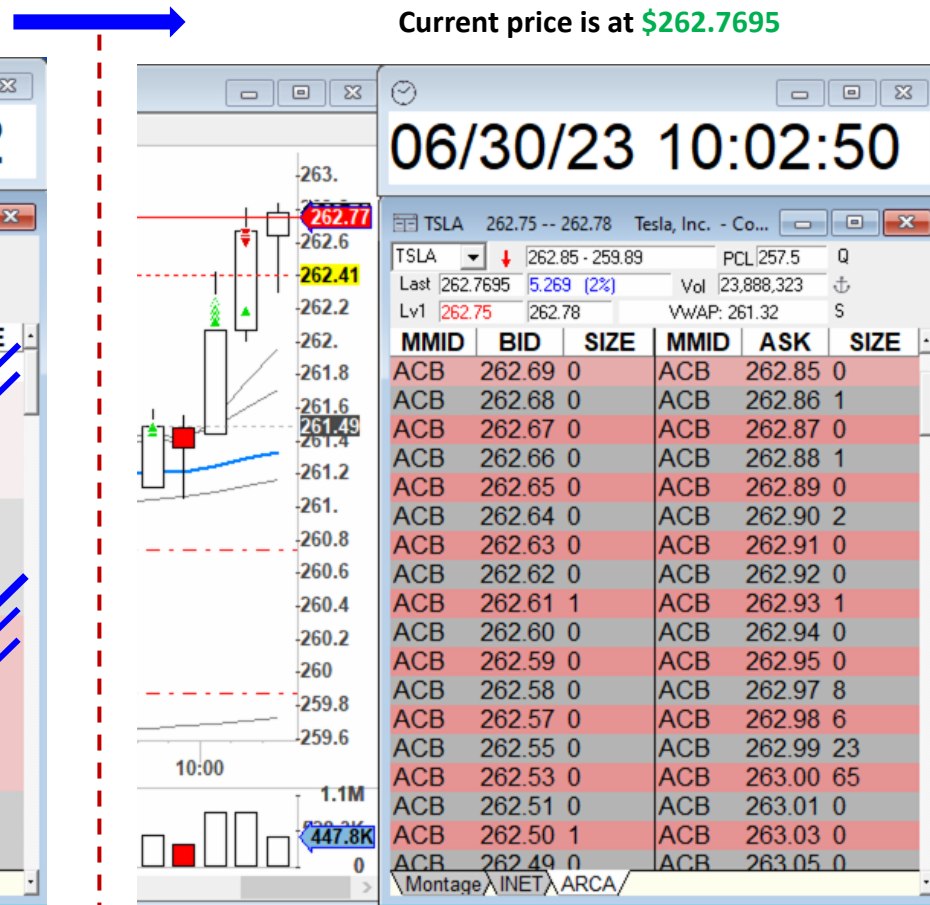
Price blasted through previously seen large **Immediate** and **Underlying Ask**.

Example on TSLA on 06/30/2023: **Bullish** price due to higher large Asks.



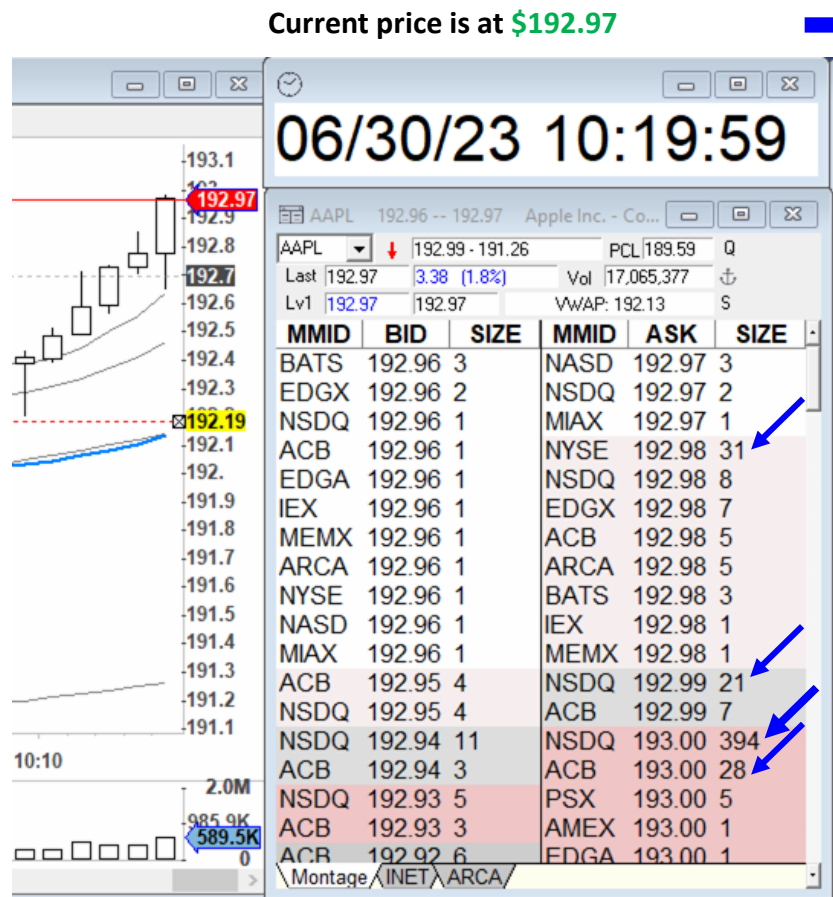
Large **Immediate Asks** at \$262.48 that do not show bearish stacking behavior. (They are not stepping down).

There are also large and one large-“huge” **Underlying Ask(s)** at \$262.50.



Price blasted through previously seen large **Immediate** and **Underlying Ask**.

Example on AAPL on 06/30/2023: **Bullish** price due to higher large Asks.

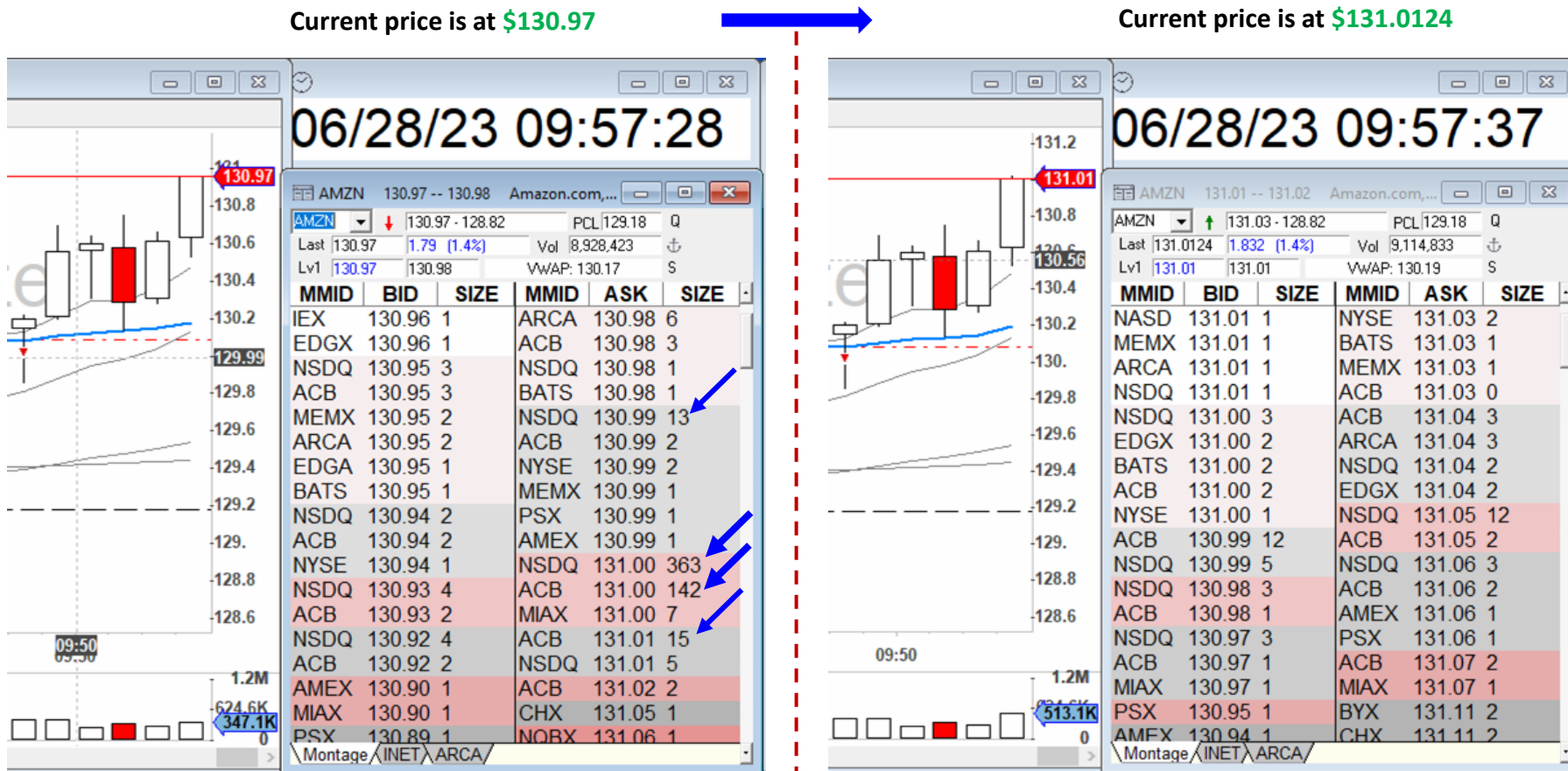


There are large **Underlying Asks** at \$192.98, 192.99, 193.00, and a large-“huge” **Underlying Ask** at 193.00.



Price blasted through previously seen large **Underlying Asks**.

*Example on AMZN on 06/28/2023: **Bullish** price due to higher large Asks.*



There are large **Underlying Asks** at \$130.99, and 13.01. There are also large-“huge” **Underlying Asks** at 131.00.

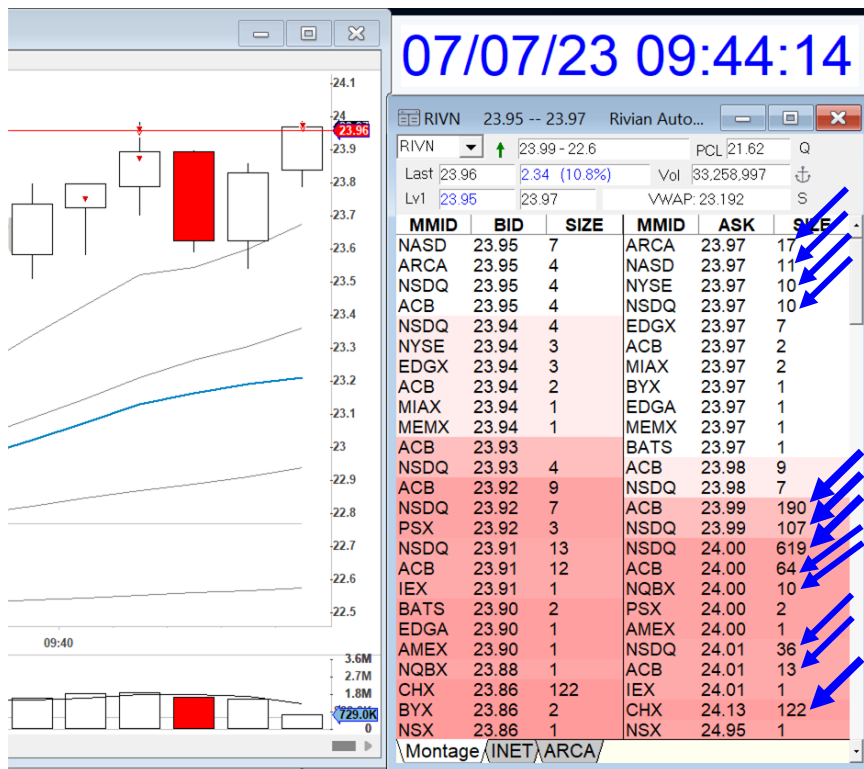
Price blasted through previously seen large/huge **Underlying Asks**.

Example on RIVN on 07/07/2023: **Bullish** price due to higher large Asks.

Current price is at \$23.96



Current price is at \$24.16

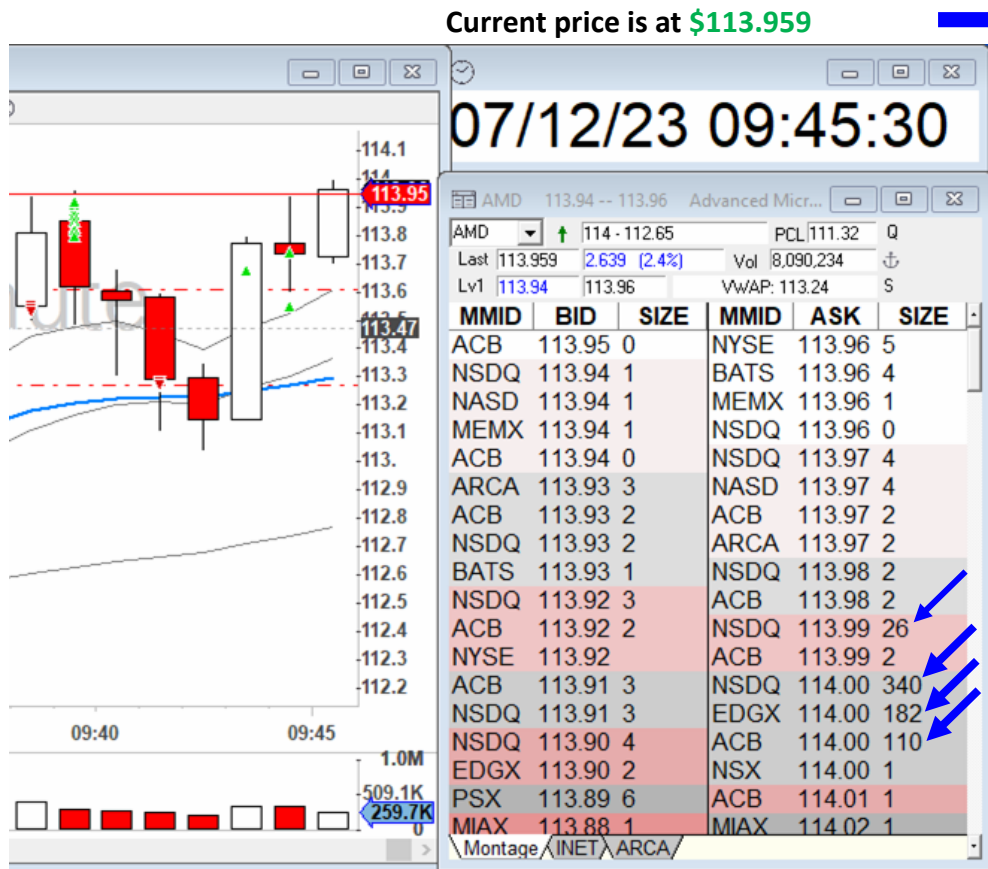


Large **Immediate Asks** at \$23.97 that do not show bearish stacking behavior. (They are not stepping down).

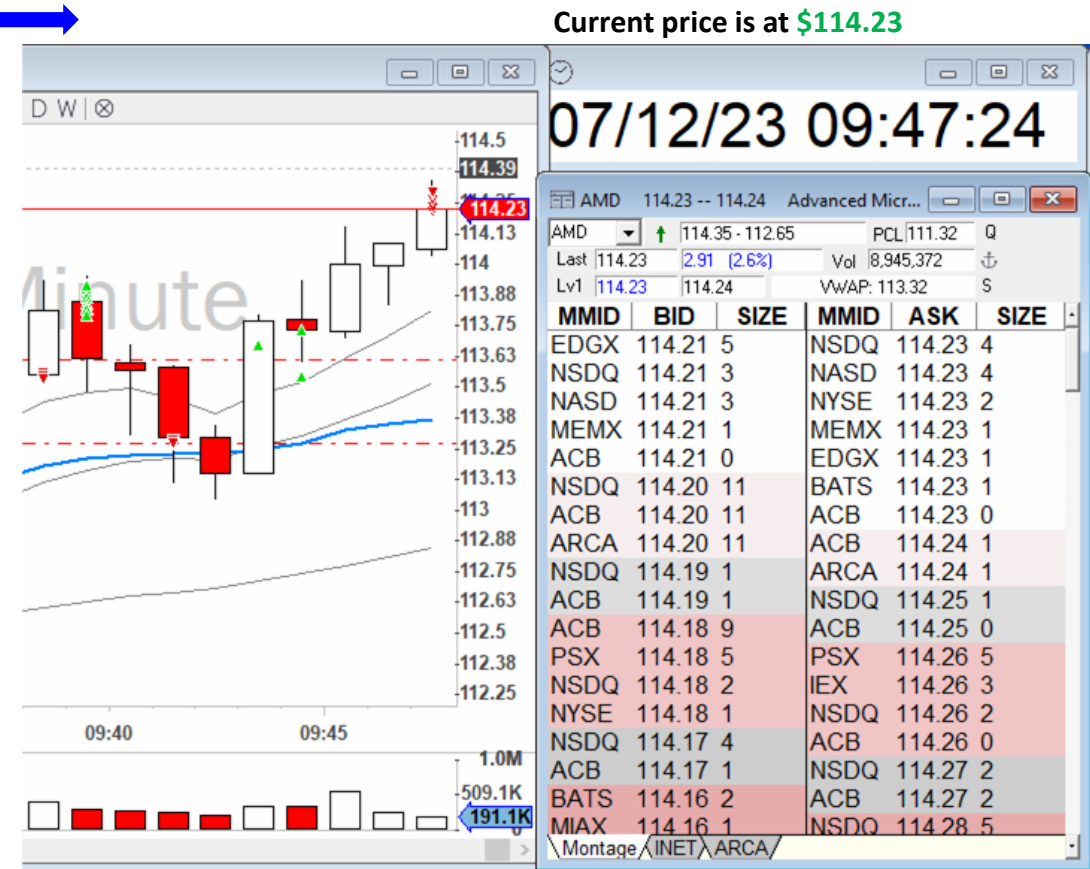
There are also large **Underlying Asks** at \$23.99, \$24.01, \$24.13.

Price blasted through previously seen large **Underlying Asks**.

Example on AMD on 07/12/2023: **Bullish** price due to higher large Asks.



There are large **Underlying Asks** at \$114.00, and 113.99.



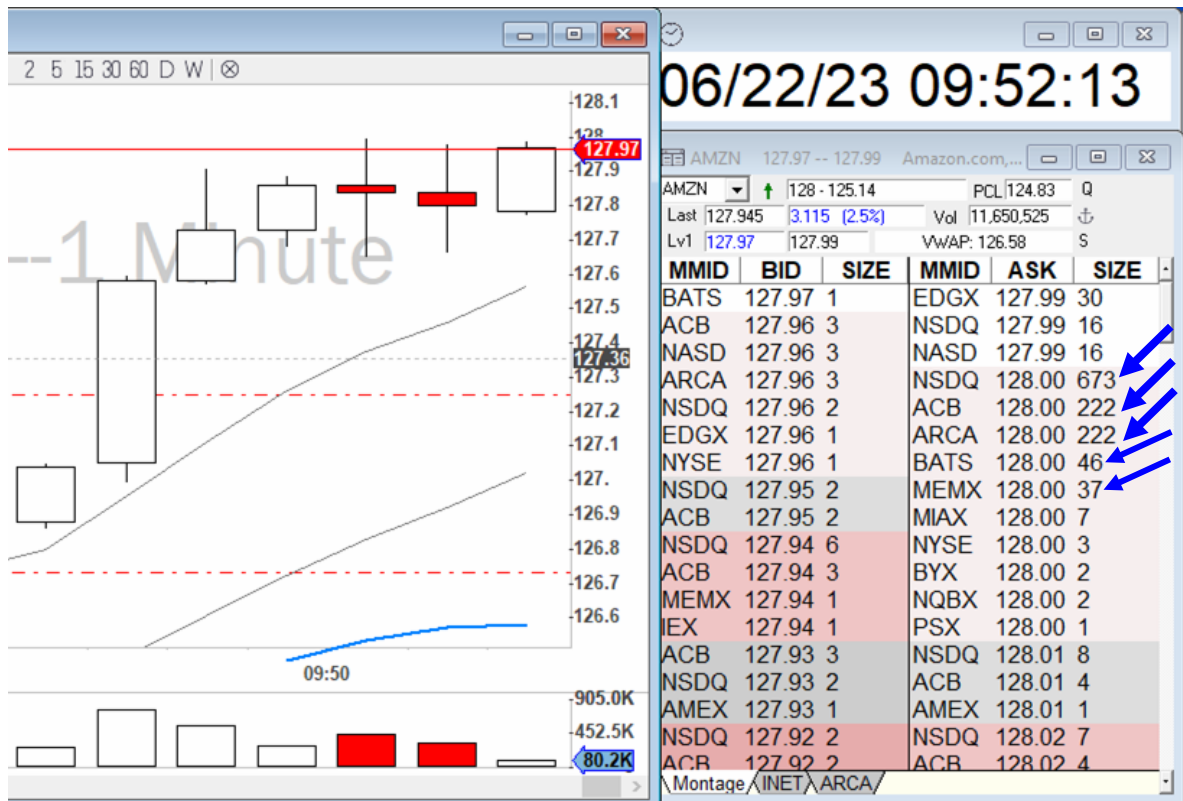
Price blasted through previously seen large **Underlying Asks**.

Example on AMZN on 06/22/2023: **Bullish** price due to higher large Asks.

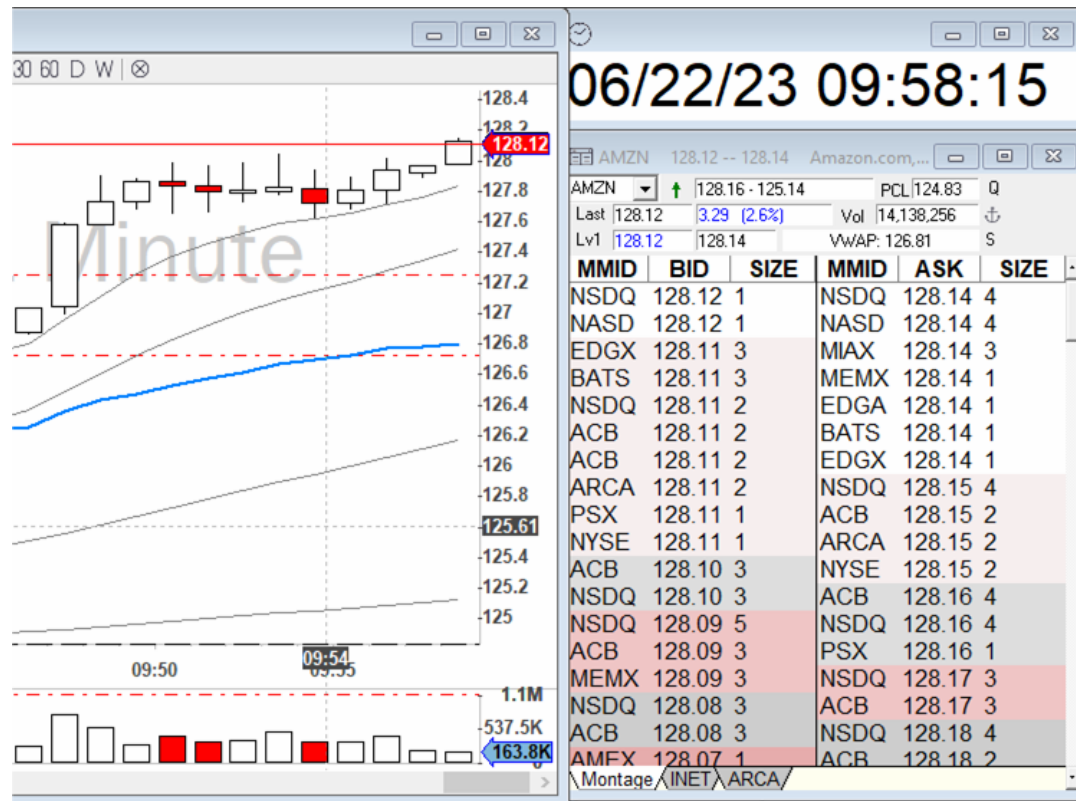
Current price is at \$127.945



Current price is at \$128.12



There are large **Underlying Asks** at \$128.00.



Price blasted through previously seen large **Underlying Asks**.

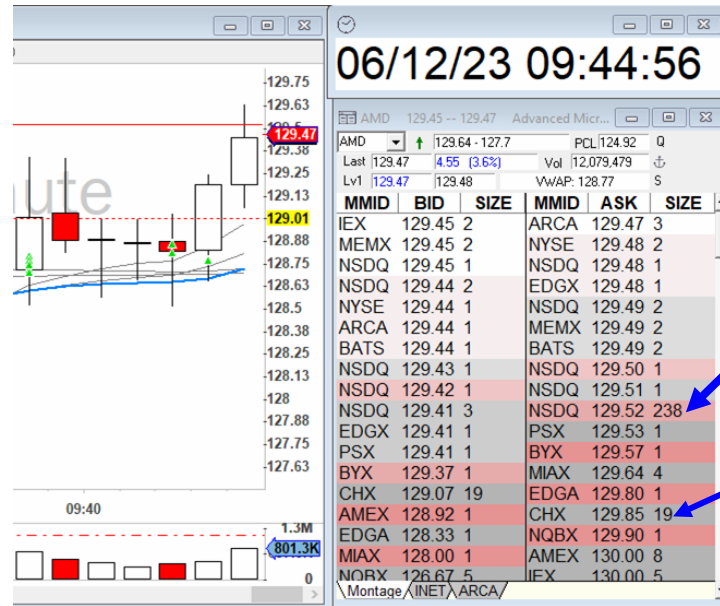
Example on AMD on 06/12/2023: **Bullish** price due to higher large Asks.

Current price is at **\$128.9**



There are large **Underlying Asks** at \$128.94 and 129.30.

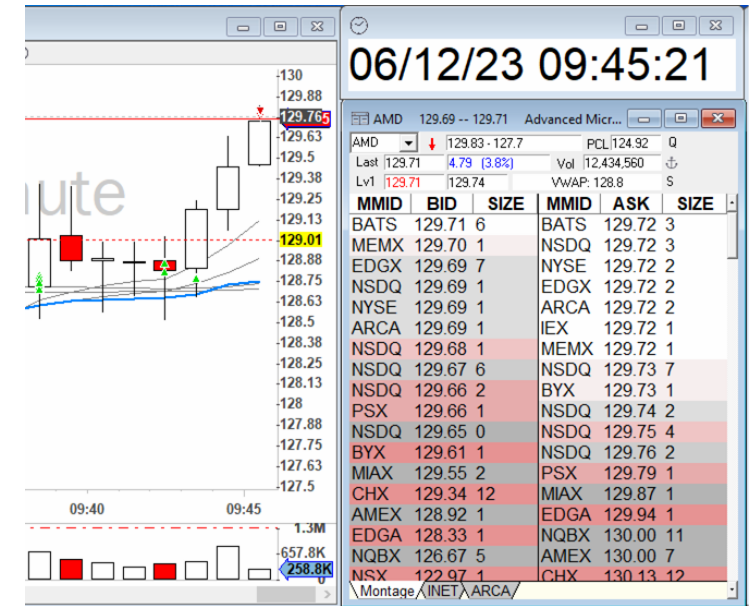
Current price is at **\$129.47**



Price blasted through previously seen large **Underlying Asks**.

There are large **Underlying Asks** at \$129.52 and 129.85.

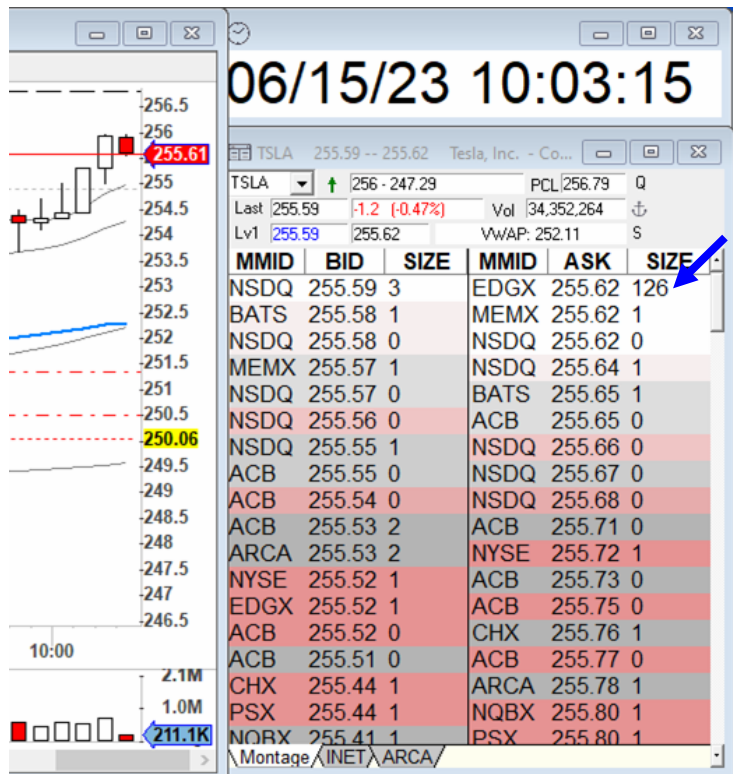
Current price is at **\$129.71**



Price blasted through previously seen large **Underlying Asks**.

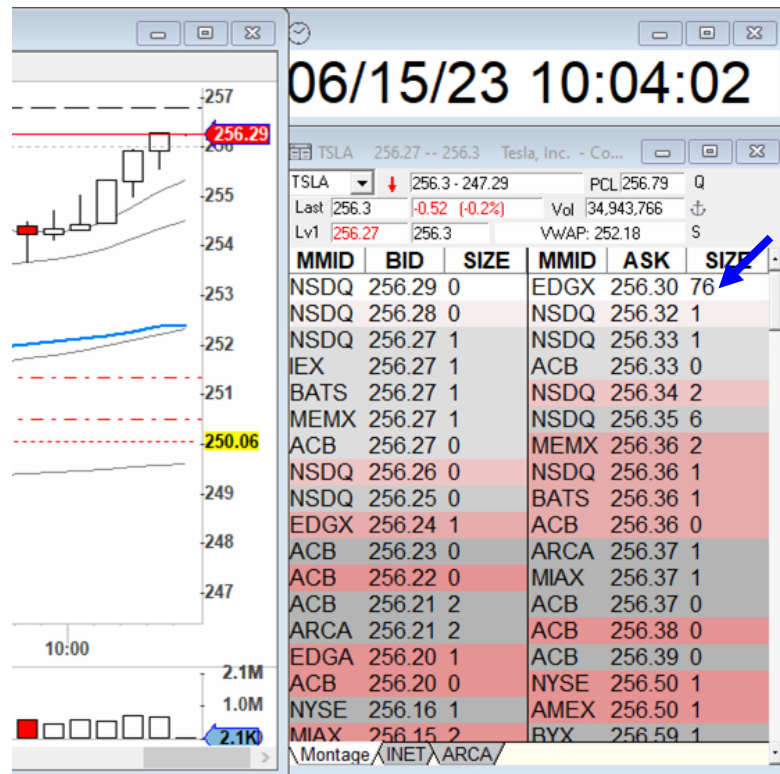
Example on TSLA on 06/15/2023: **Bullish** price due to higher large Asks.

Current price is at \$255.59



Large **Immediate Asks** at \$255.62 that does not show bearish stacking behavior. (They are not stepping down).

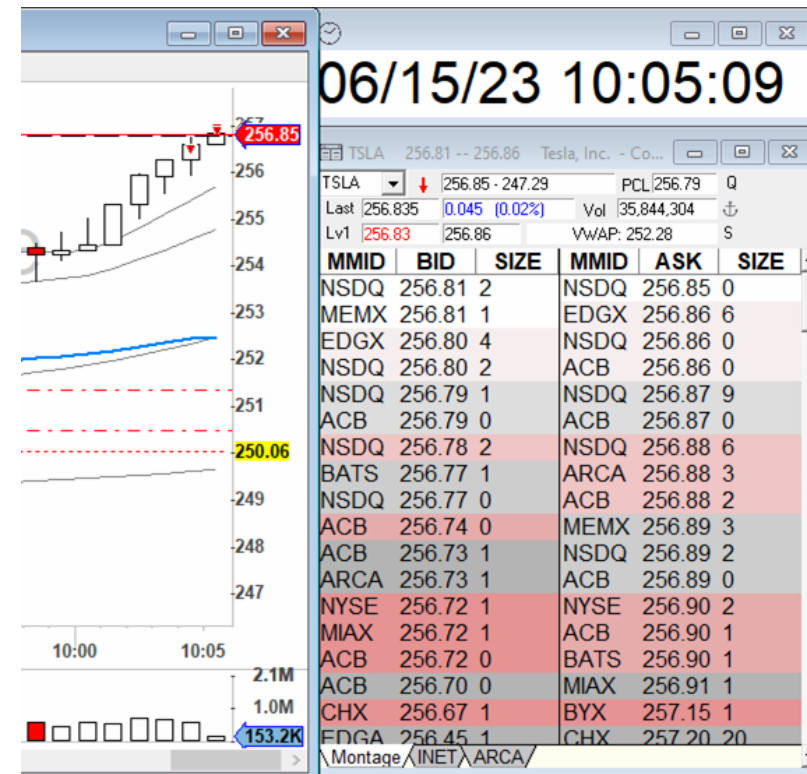
Current price is at \$256.30



Price blasted through previously seen large **Immediate** and **Underlying Asks**.

Large **Immediate Asks** at \$256.30 that does not show bearish stacking behavior. (They are not stepping down).

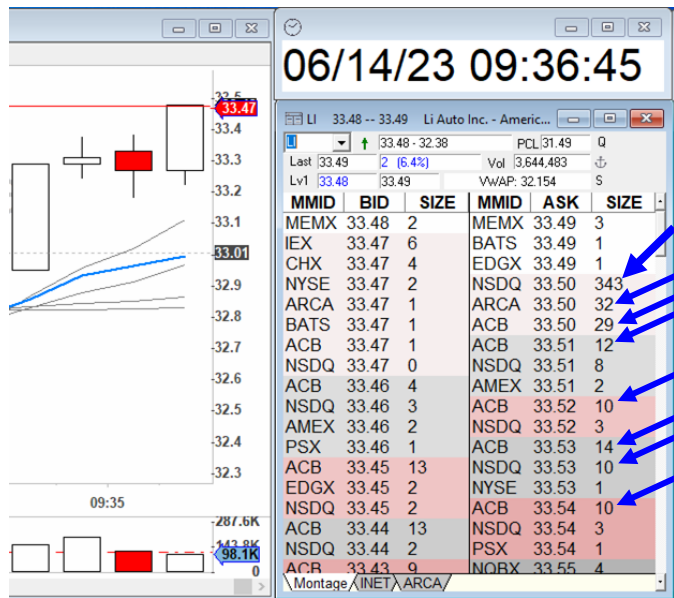
Current price is at \$256.835



Price blasted through previously seen large **Immediate Asks**.

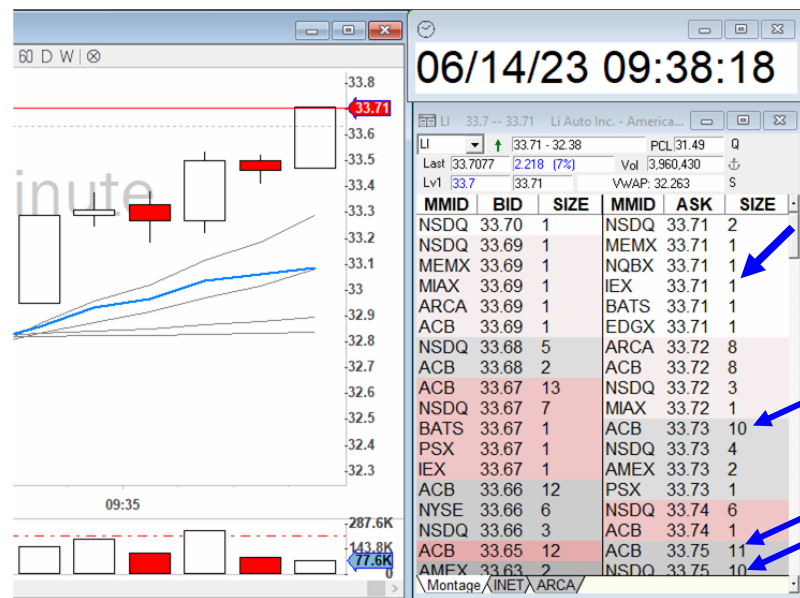
Example on LI on 06/14/2023: **Bullish** price due to higher large Asks.

Current price is at **\$33.49**



There are large **Underlying Asks** at \$33.50, \$33.51, \$33.52, \$33.53, and \$33.54. (*Imbalanced ladder*)

Current price is at **\$33.7077**



Price blasted through previously seen large **Underlying Asks**.
More large **Underlying Asks** are seen at \$33.73 and \$33.75. (*Imbalanced ladder*)

Current price is at **\$33.99**



Price blasted through previously seen large **Immediate Asks**.
More large **Underlying Asks** are seen at \$33.99, \$34.00, \$34.01, \$34.02. (*Imbalanced ladder*)