

How does the price move lower: Bookmap's perspective on aggressive **sellers**



TRADING TERMINAL.COM
FROM BEAR BULL TRADERS

Presented by: RTrades (Roko)



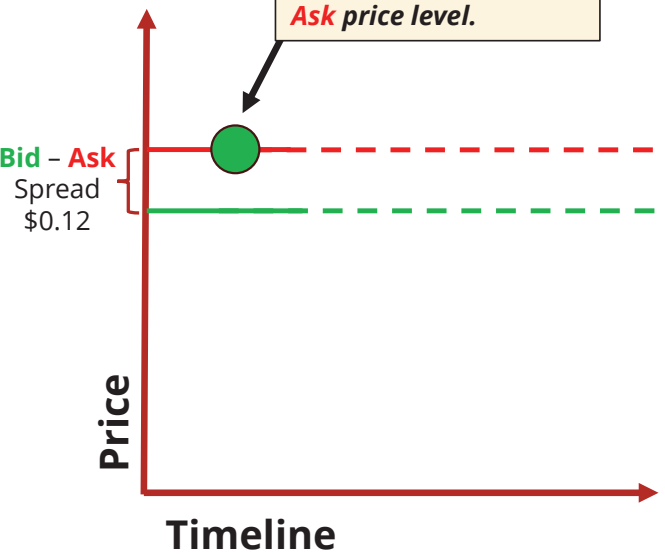
Outline: **How does the price of shares of a stock move lower in the market?**

- Bookmap's perspective on Market **Sell** orders: microview focus on Best **Bid**.
- Bookmap's perspective on **Sellers (Supply)** strength moving price lower.
- Imbalanced **bearish** Order book: ladder of large **Underlying Bids**.



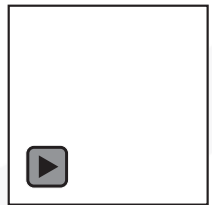
Market Sell orders move price Down. 

Current price is trading at \$132.47, the Best Ask price level.



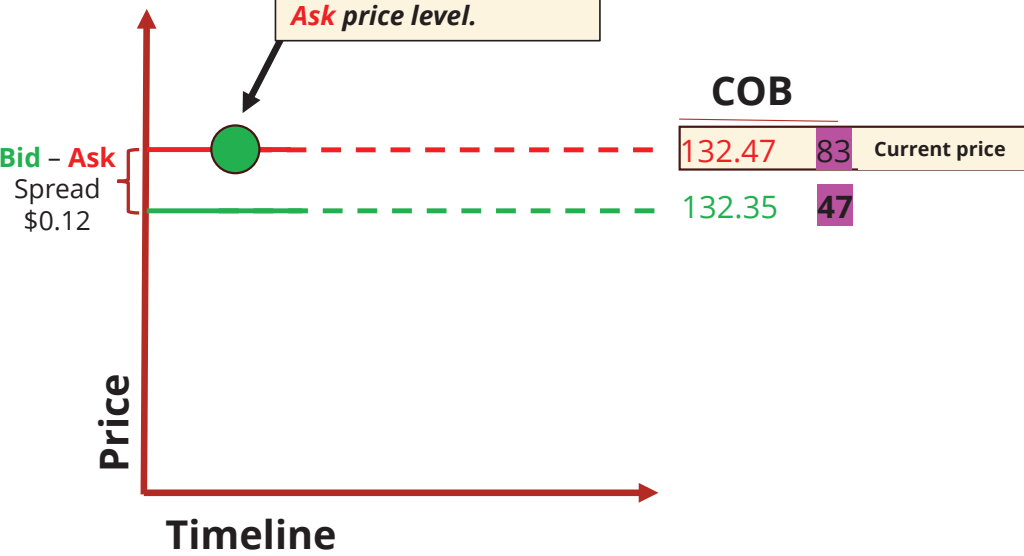
COB	
Price	Size
132.47	83
132.35	47

Current price



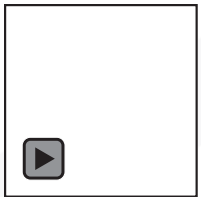
Market Sell orders move price Down.

Current price is trading at \$132.47, the Best Ask price level.

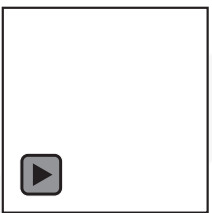
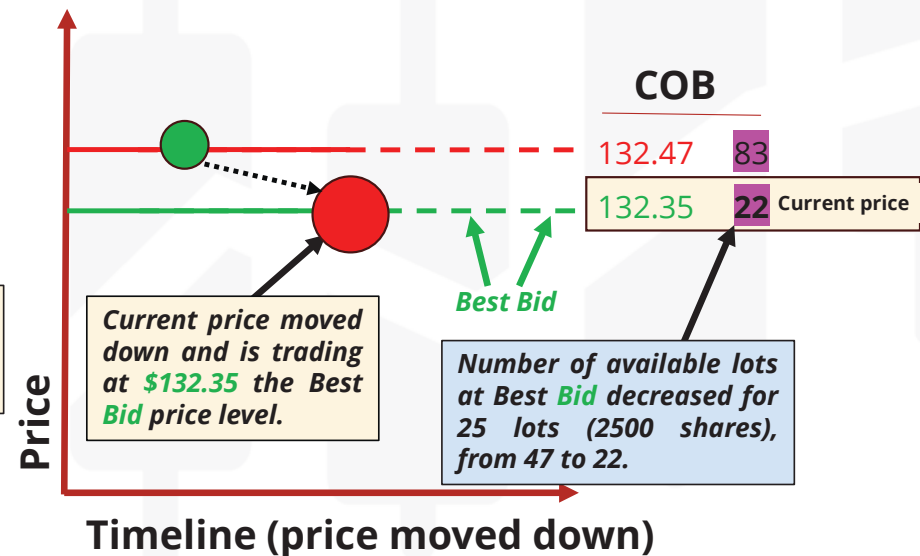
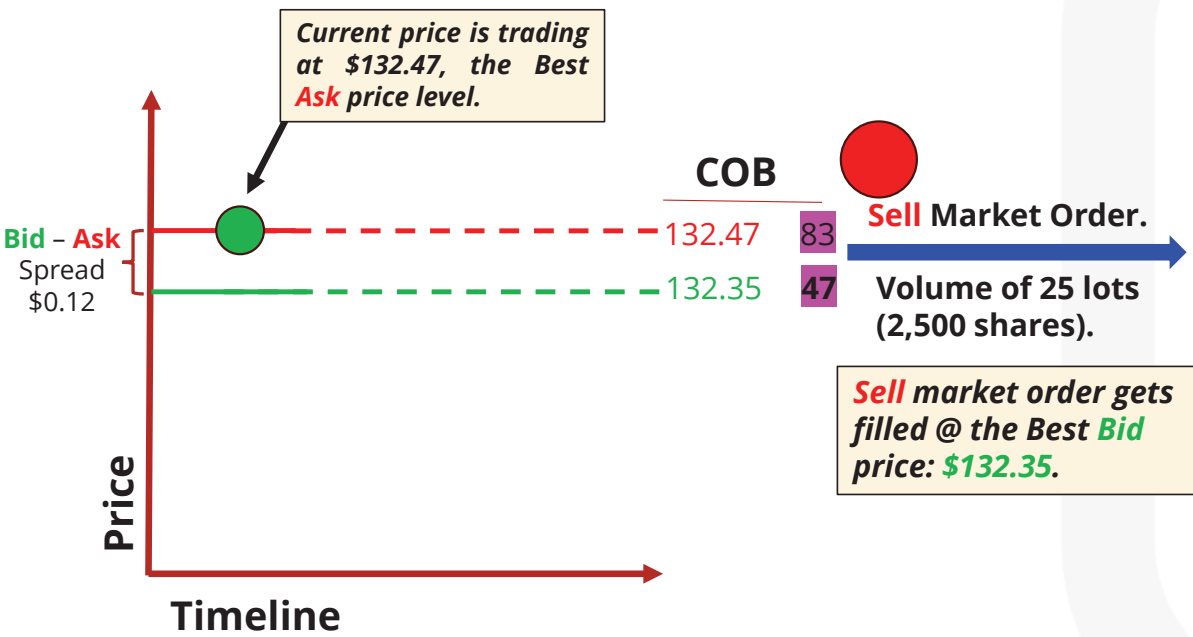


 **Sell Market Order.**

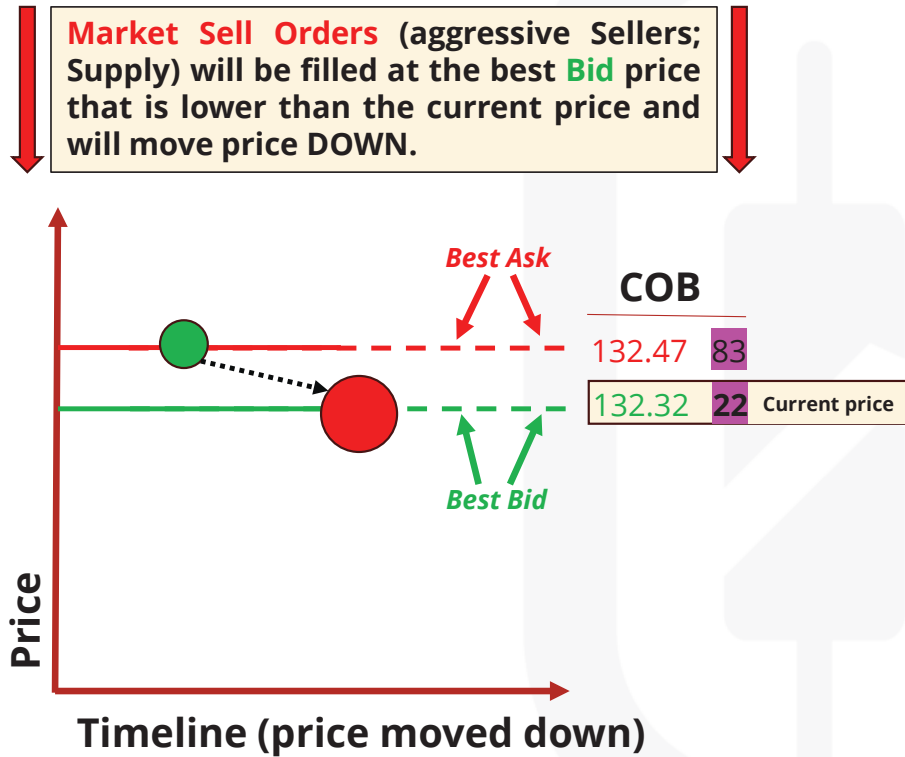
Volume of 25 lots (2,500 shares).
Sell market order gets filled @ the Best Bid price: \$132.35.



Market Sell orders move price Down. ↓



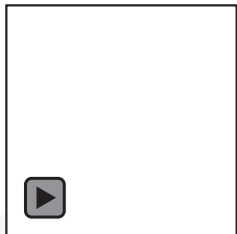
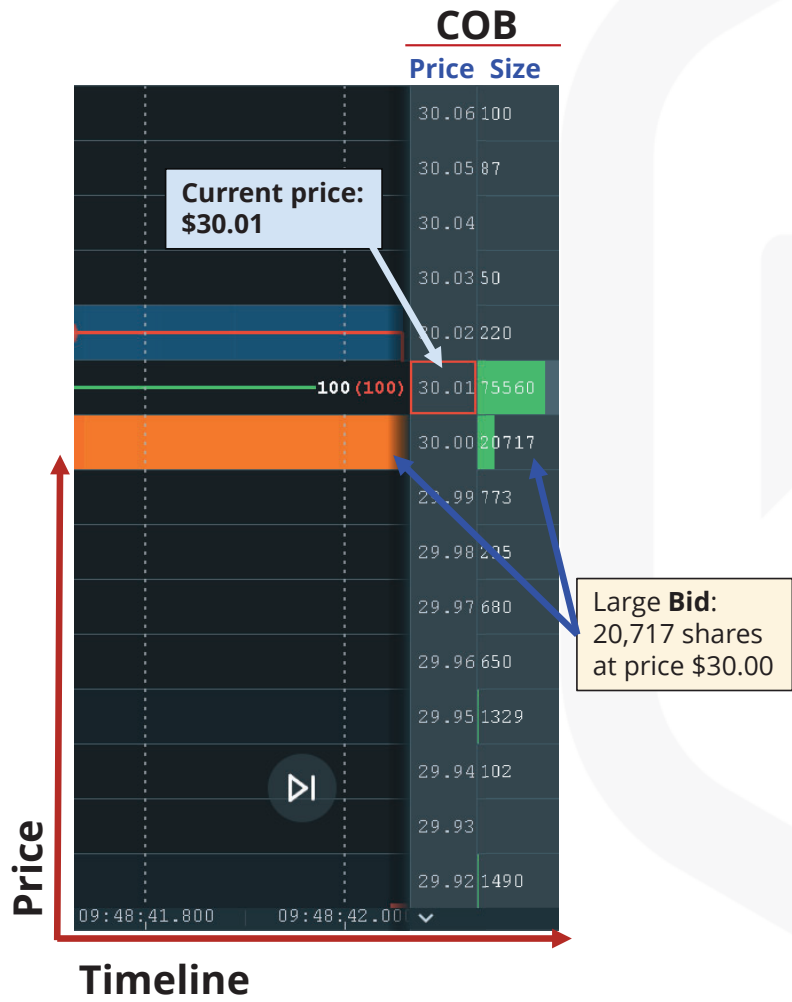
Market Sell orders get filled at the best **Bid** and move price Down. 



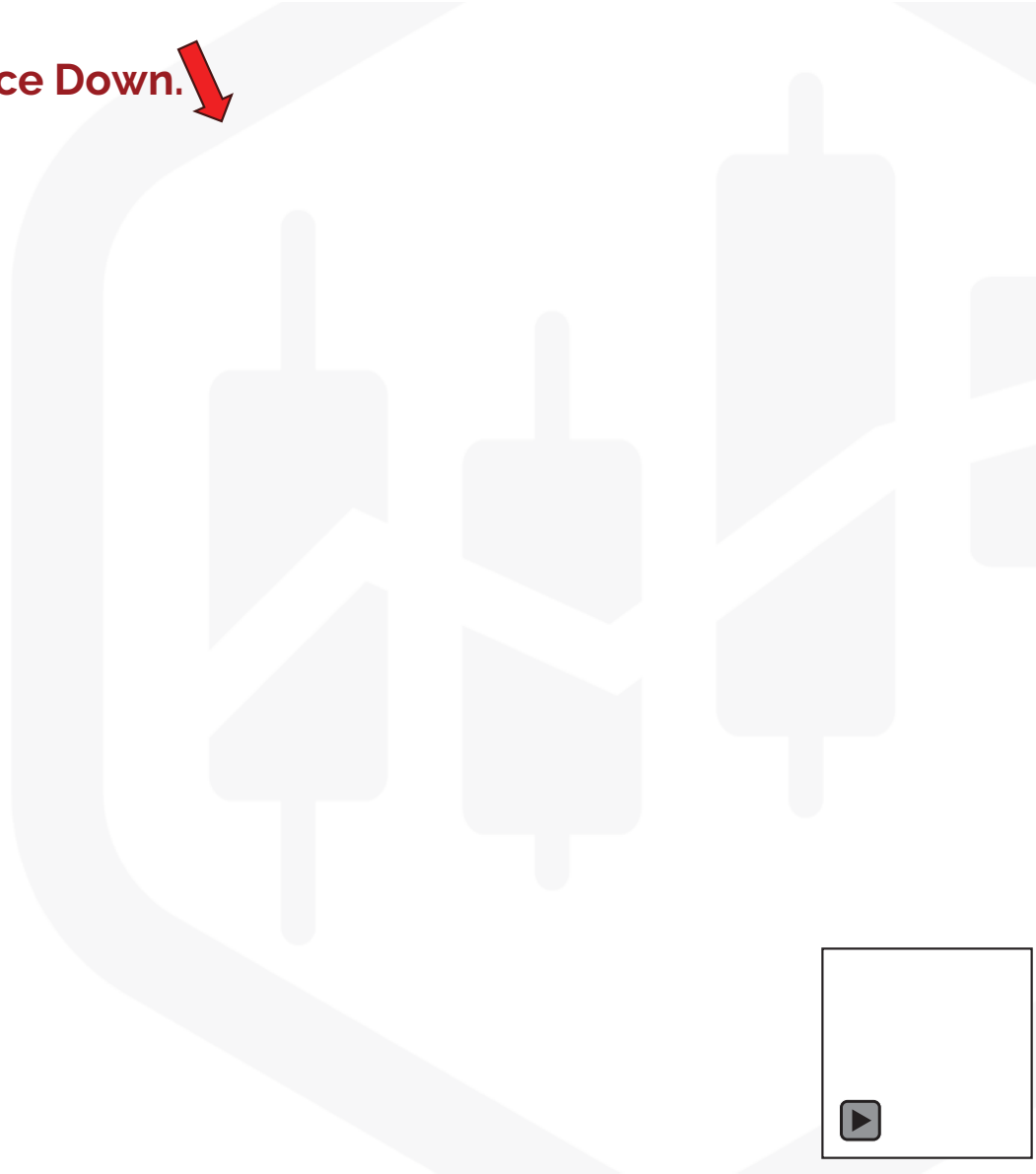
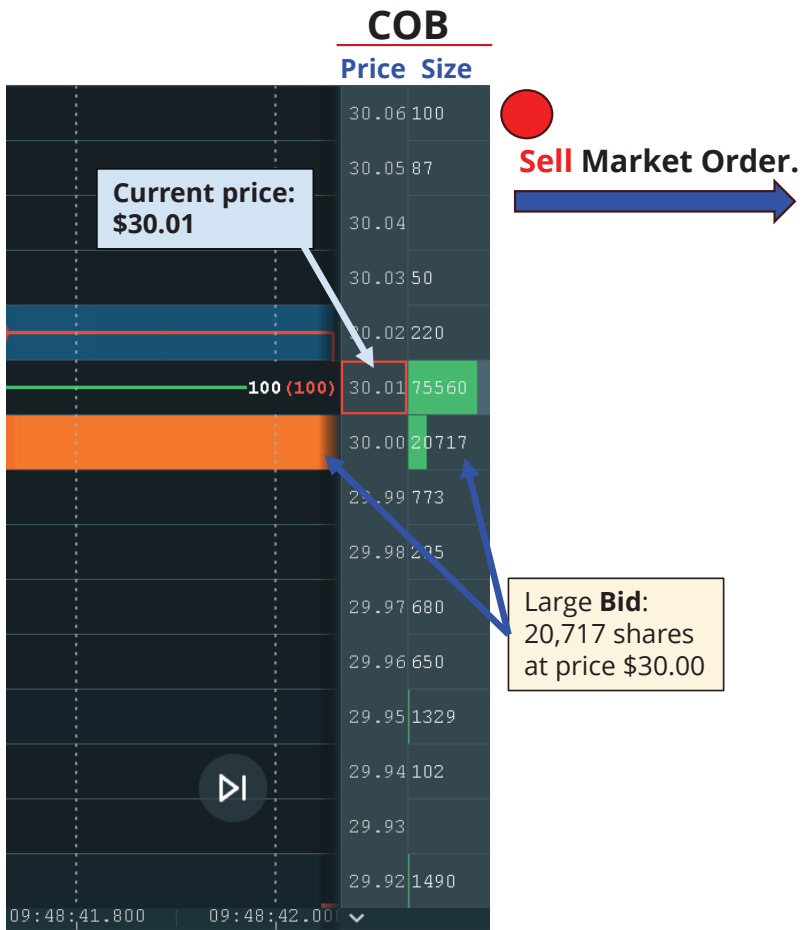
Current price moved down due to the **Sell** market order and is currently trading at new current price **\$132.32** - the **Best Bid** price level.



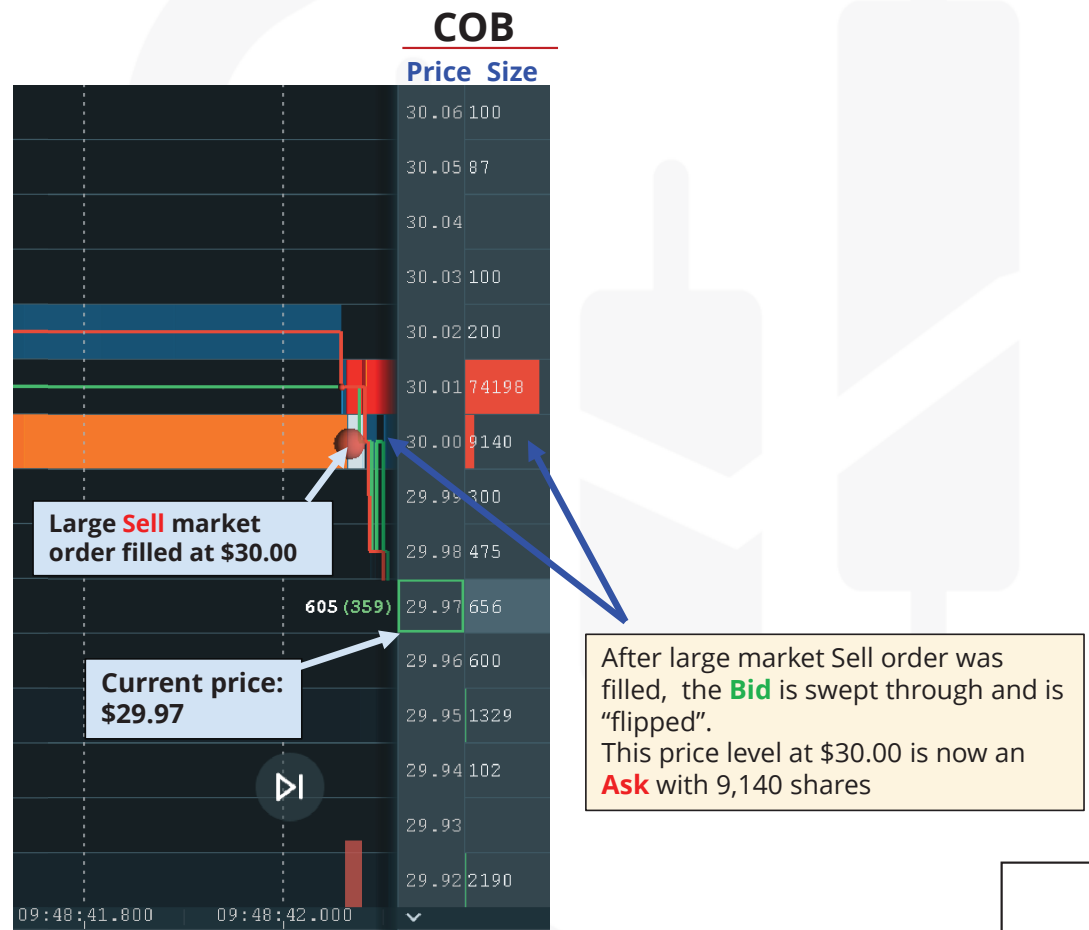
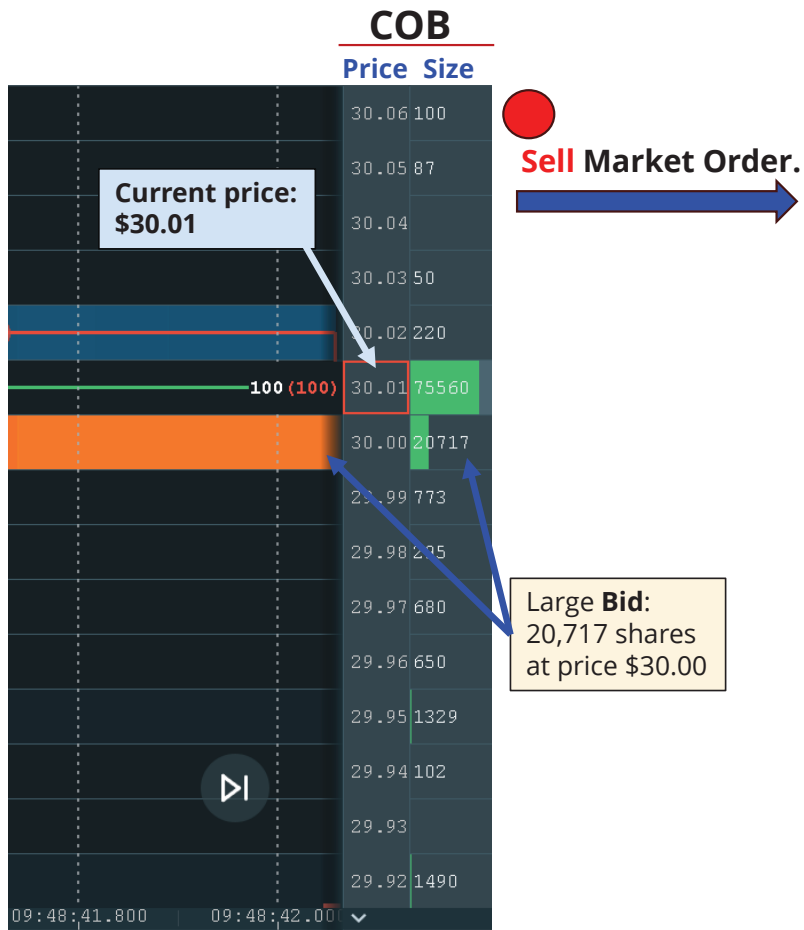
Bookmap example: **Market Sell orders move price Down.**



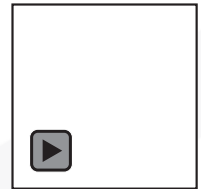
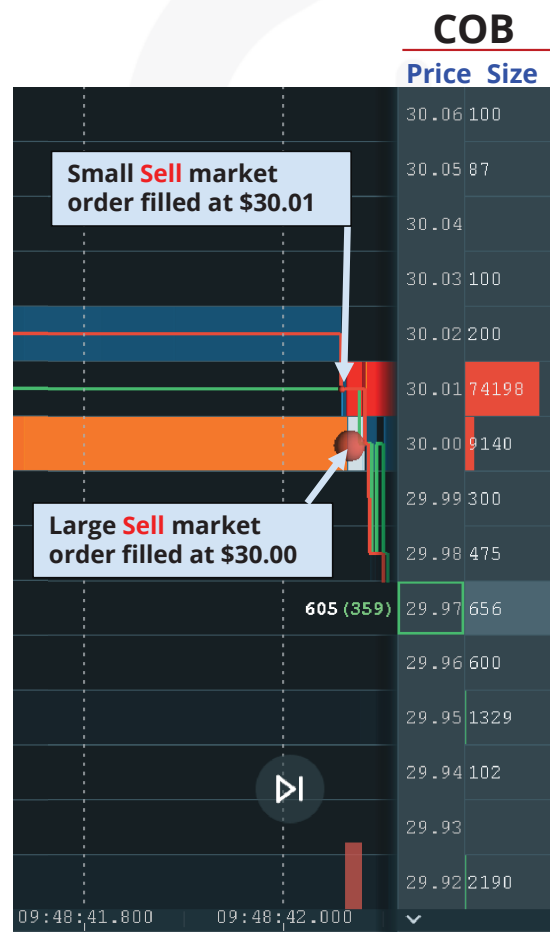
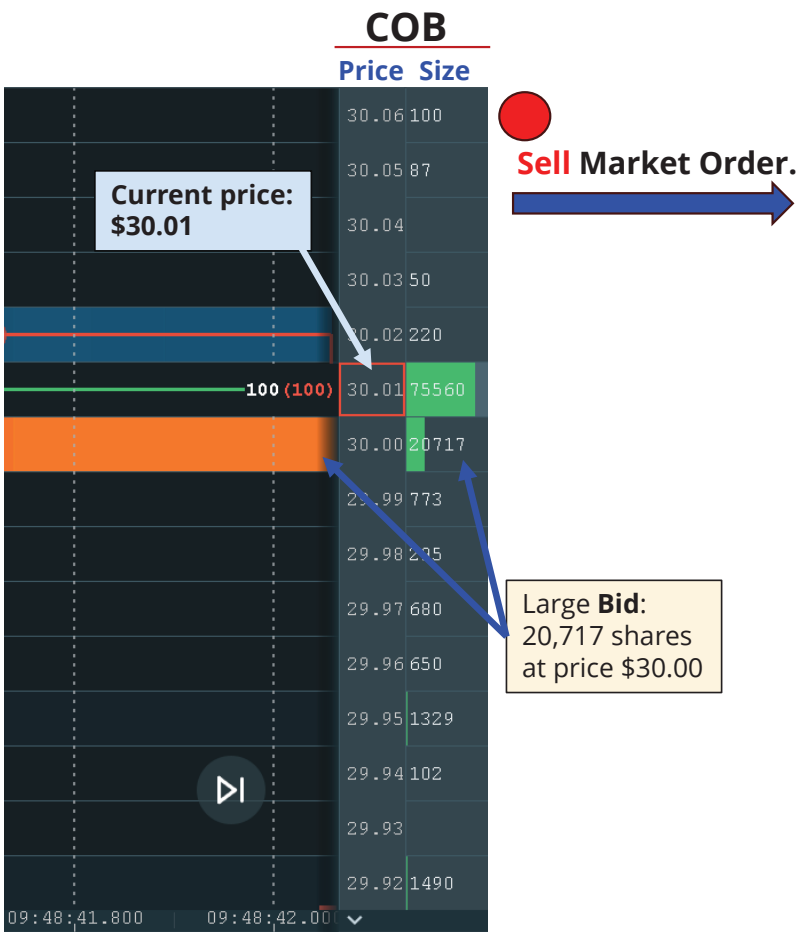
Bookmap example: Market Sell orders move price Down.



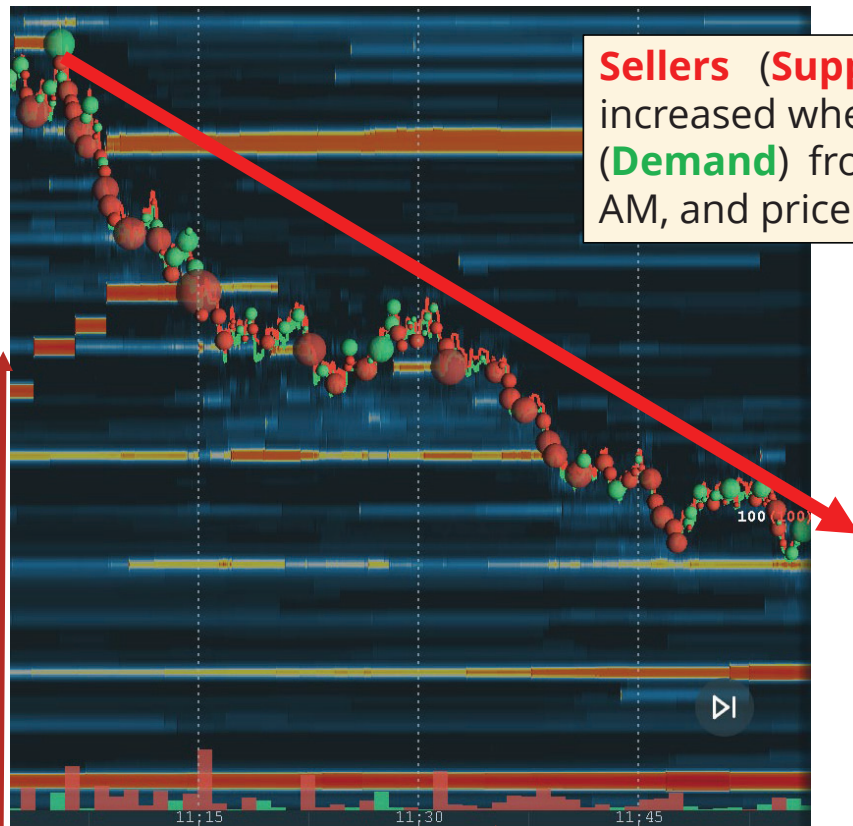
Bookmap example: Market Sell orders move price Down.



Bookmap example: Market Sell orders hit the best Bid and move price DOWN.



Bookmap example: **Sellers** are predominant after 11:00 AM.



Sellers (Supply) are (is) relatively increased when compared to **buyers (Demand)** from 11:00 AM till 11:50 AM, and price is moving **lower**.

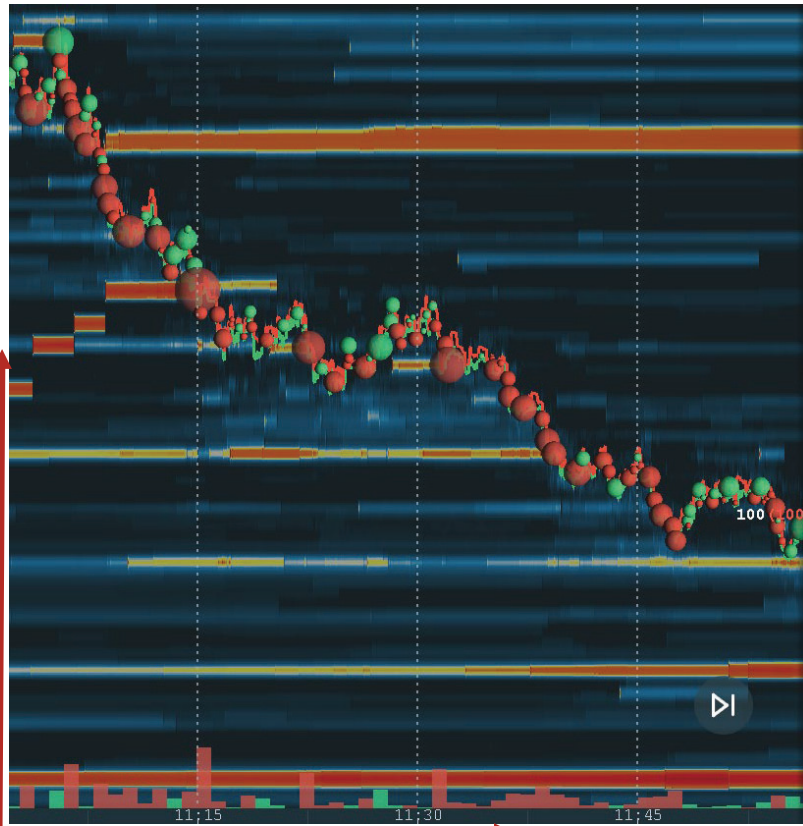
LOGIC NOTE:

In reality, **buyers** are in charge as they are getting buys filled at lower and lower prices, which means that **buyers** are getting better and better deals.

Therefore, this is known as the "**buyer's market**", when there are "**too many sellers**" and price will be dictated by the **buyers**. Thus, price is going **DOWN**.



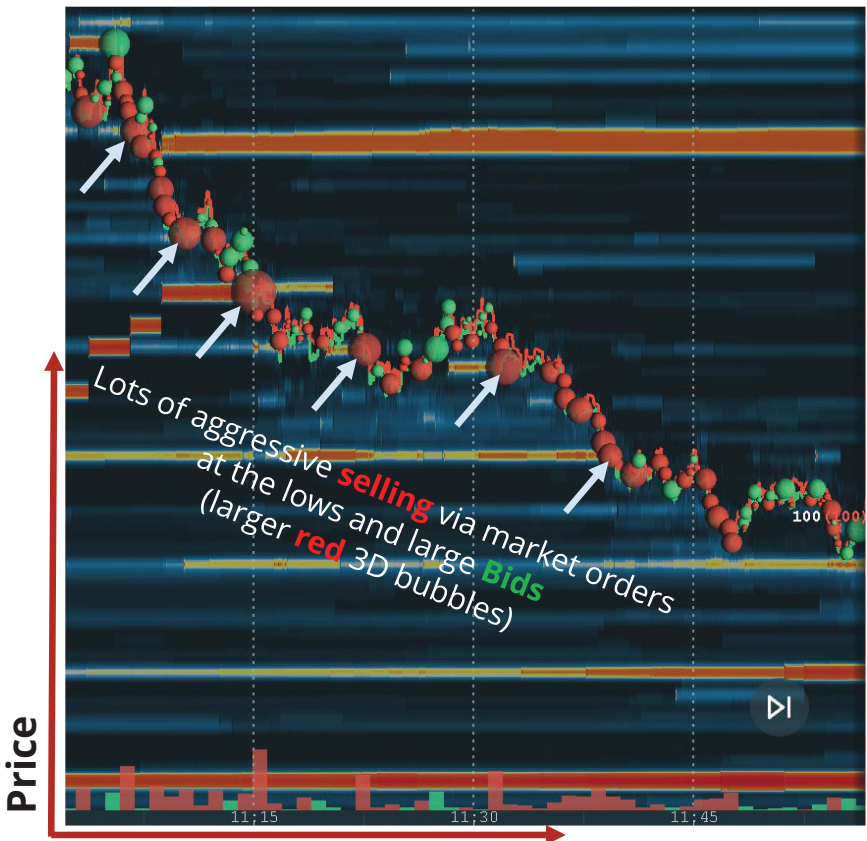
Bookmap example: **Sellers** are predominant after 11:00 AM.



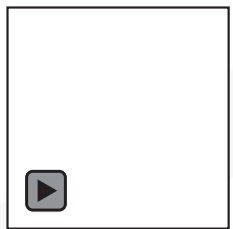
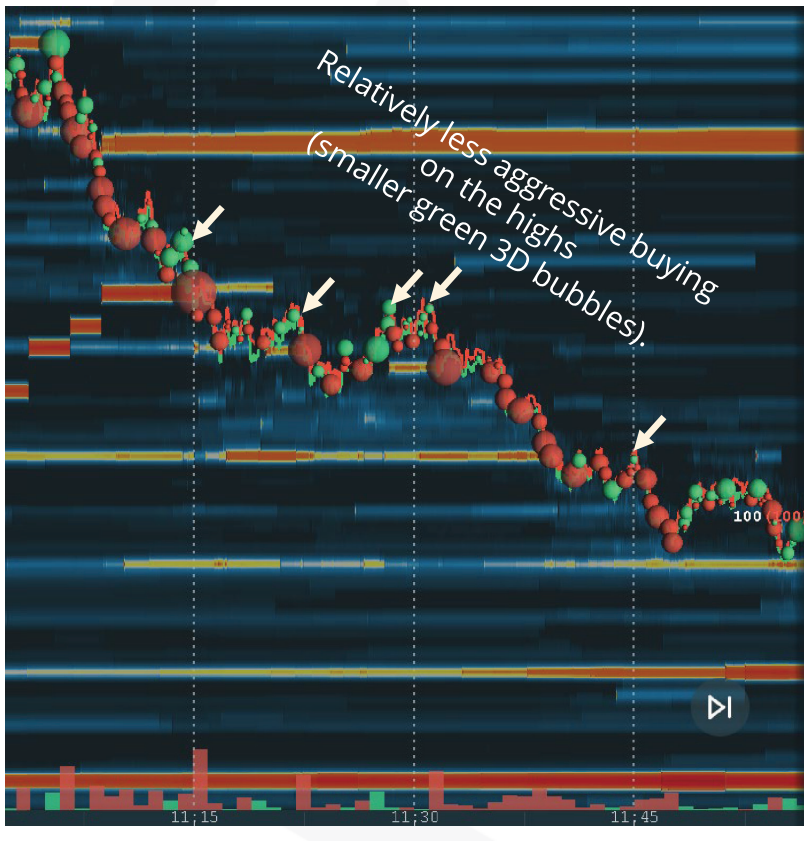
Timeline (price moved Down)



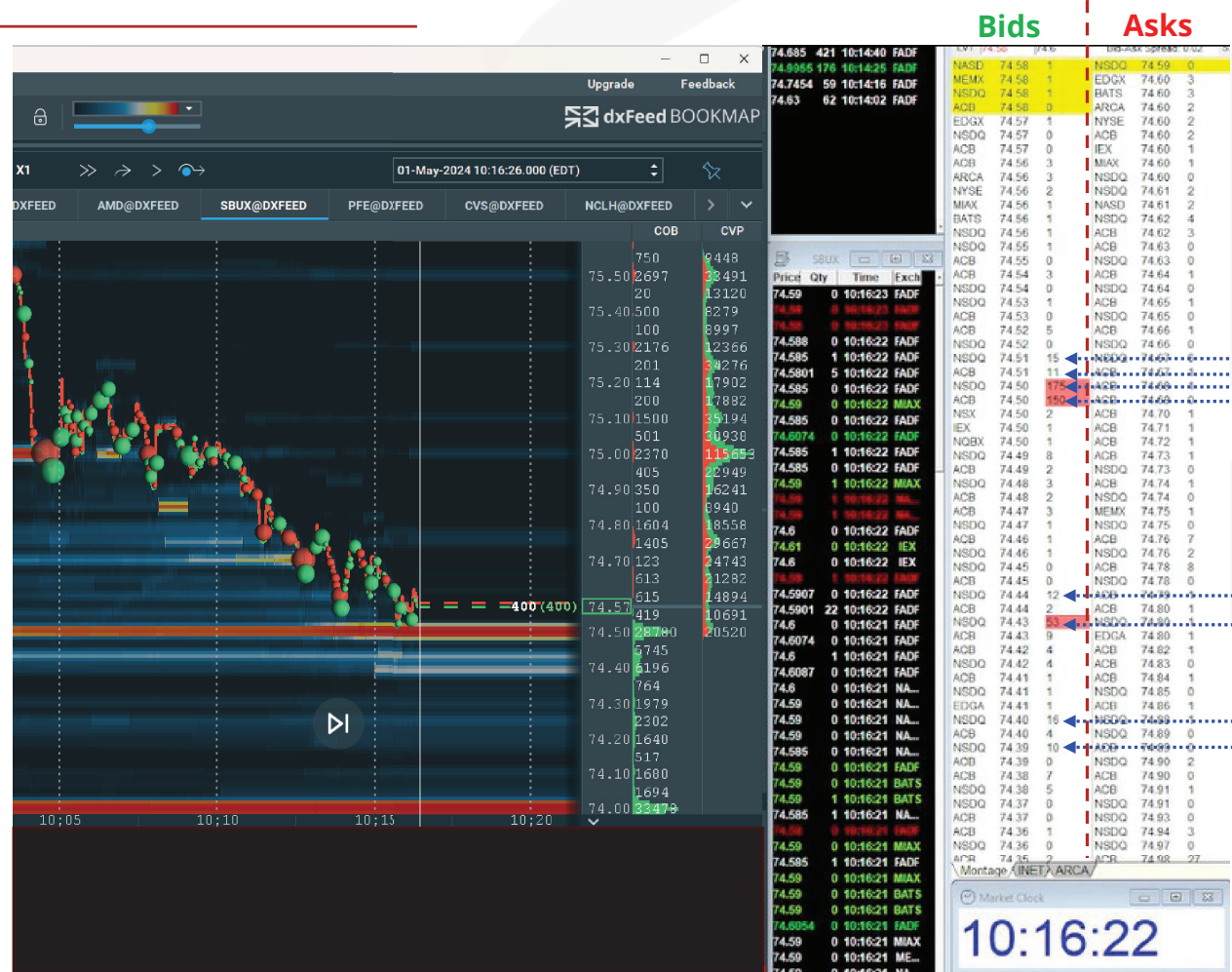
Bookmap example: **Sellers** are predominant after 11:00 AM.



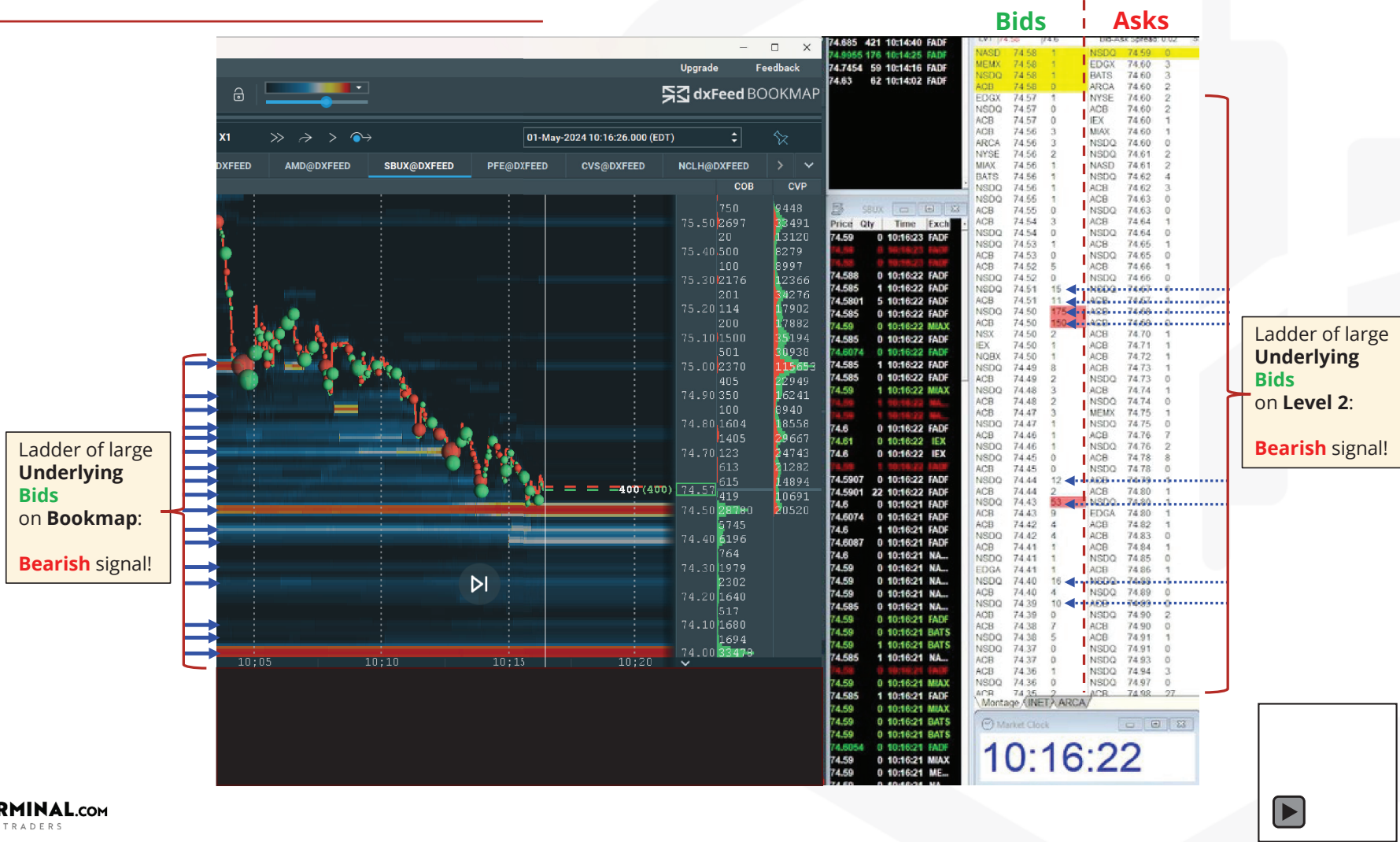
Timeline (price moved Down)



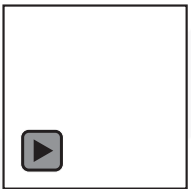
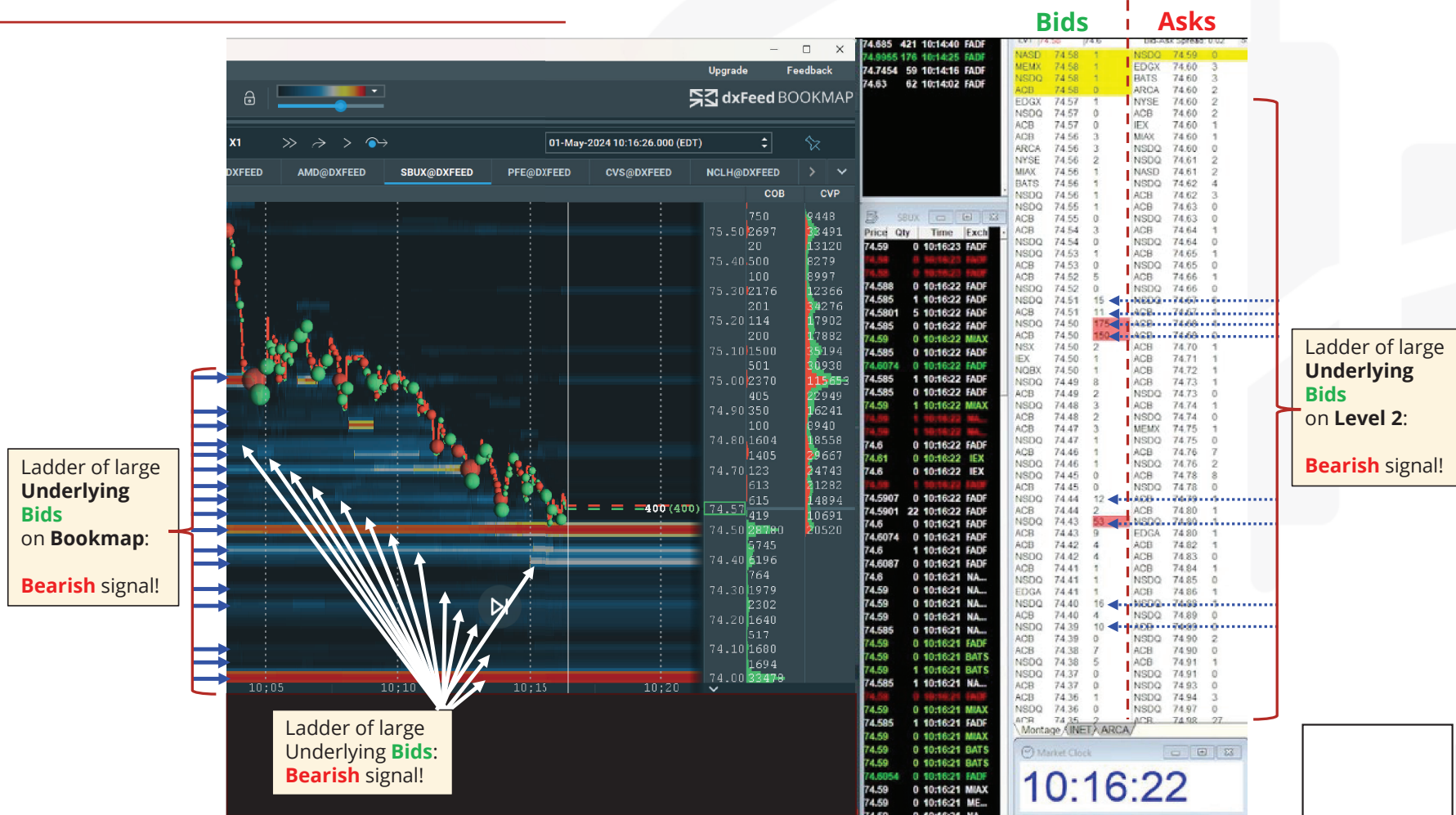
Bearish Imbalanced book order: Large ladder of Underlying Bids.



Bearish Imbalanced book order: Large ladder of Underlying Bids.



Bearish Imbalanced book order: Large ladder of Underlying Bids.



Summary

- Aggressive **Market Sell Orders** will be filled on the next available best **Bid**, which is priced below the current market price.
- Aggressive **Market Sell Orders** will move price lower.
- When **Sellers (Supply)** are relatively stronger compared to **Buyers (Demand)**, price will move lower.
- Ladder of large **Underlying Bid** limit orders with lower and lower prices is a **bearish** sign.
- For price to move lower and lower, the ladder of large **Underlying Bids** needs to be accompanied with **aggressive sellers (Supply)**.

