

# Indicators in Bokmap: Absorption indicator



**TRADING TERMINAL.COM**  
FROM BEAR BULL TRADERS

Presented by: RTrades (Roko)



# Outline

---

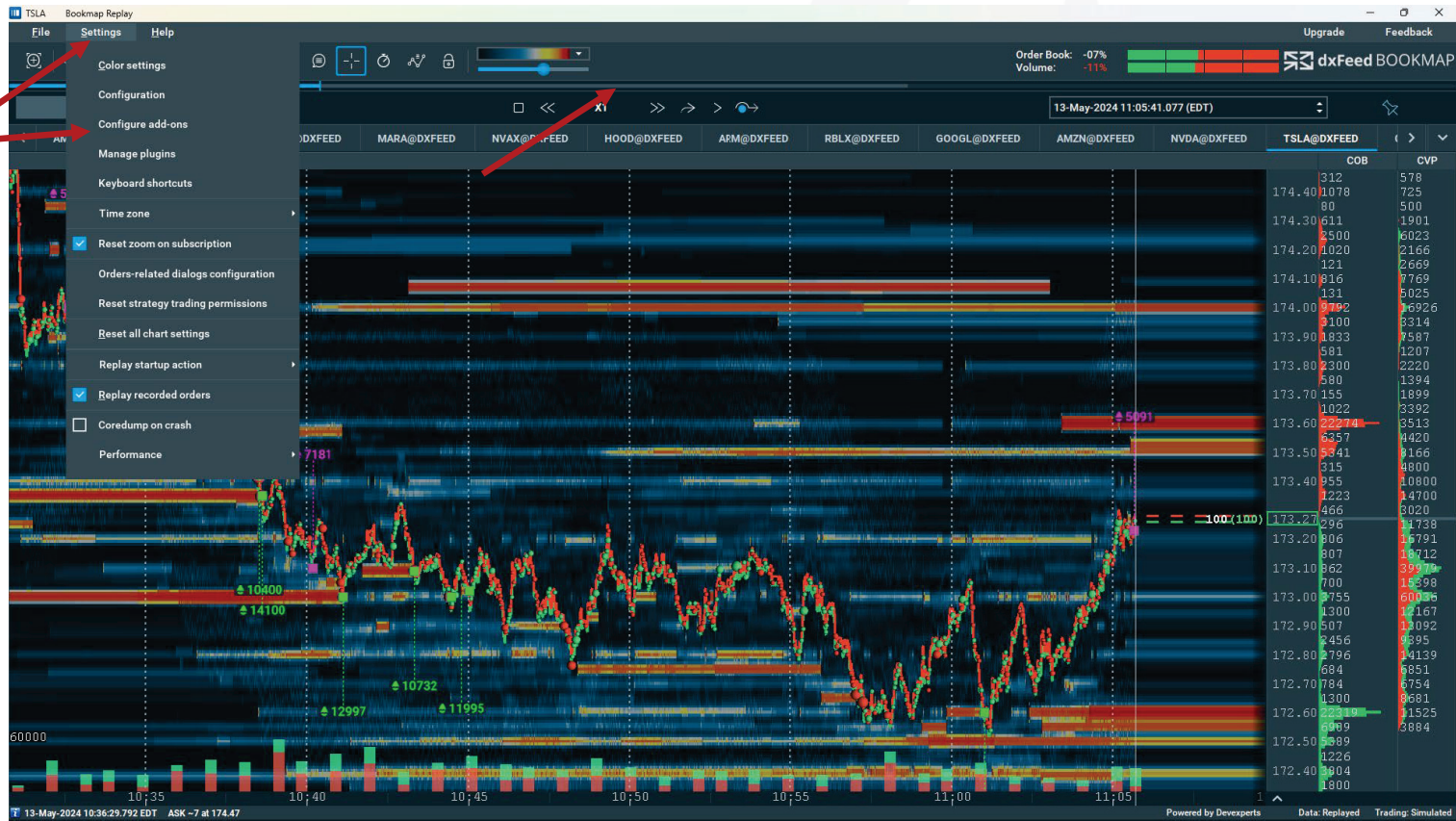
## Indicators in Bookmap:

- Absorption indicator

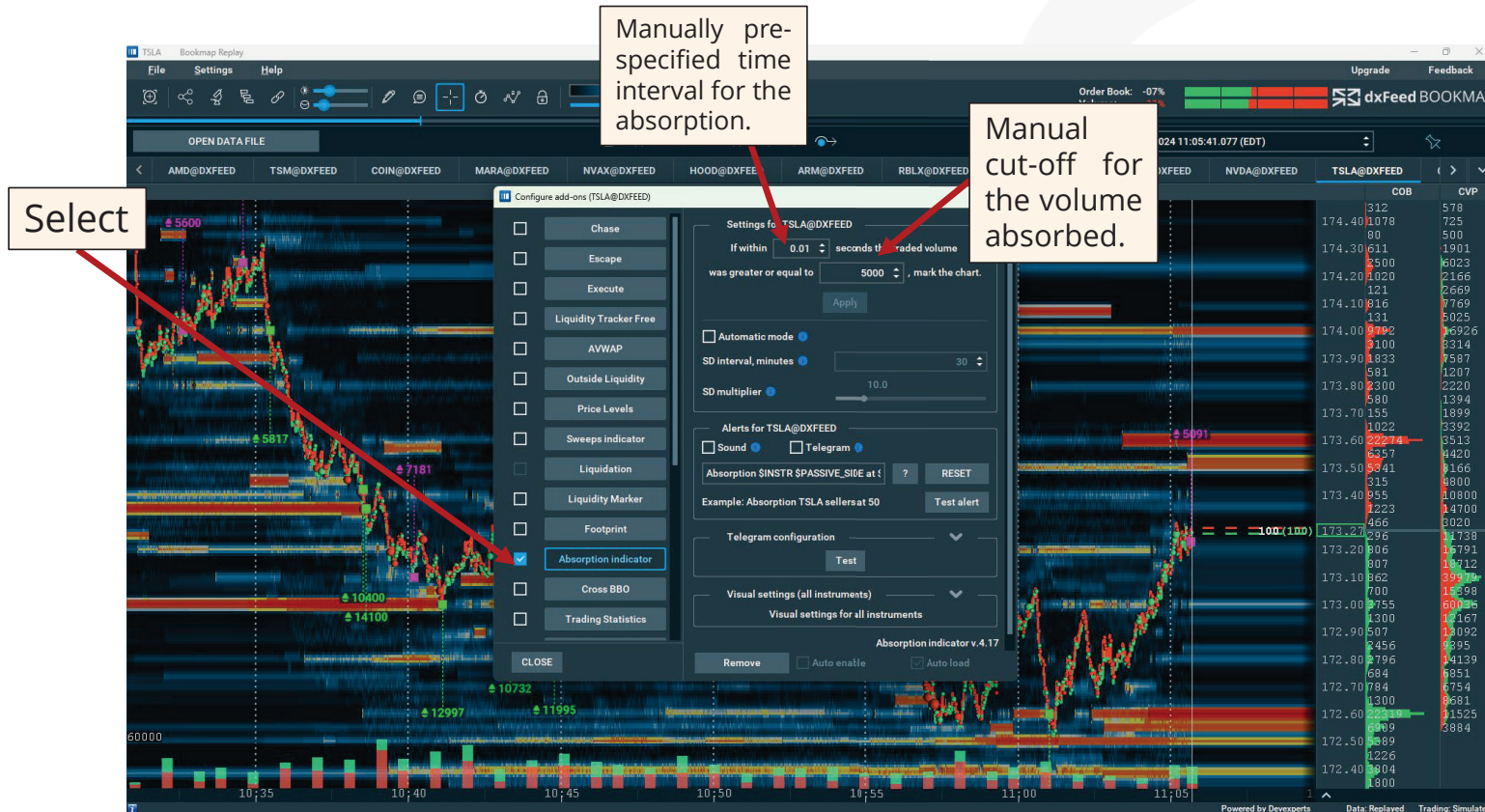


# Absorption indicator

Absorption happens at key price levels and is induced by aggressive **buying** or **selling**.



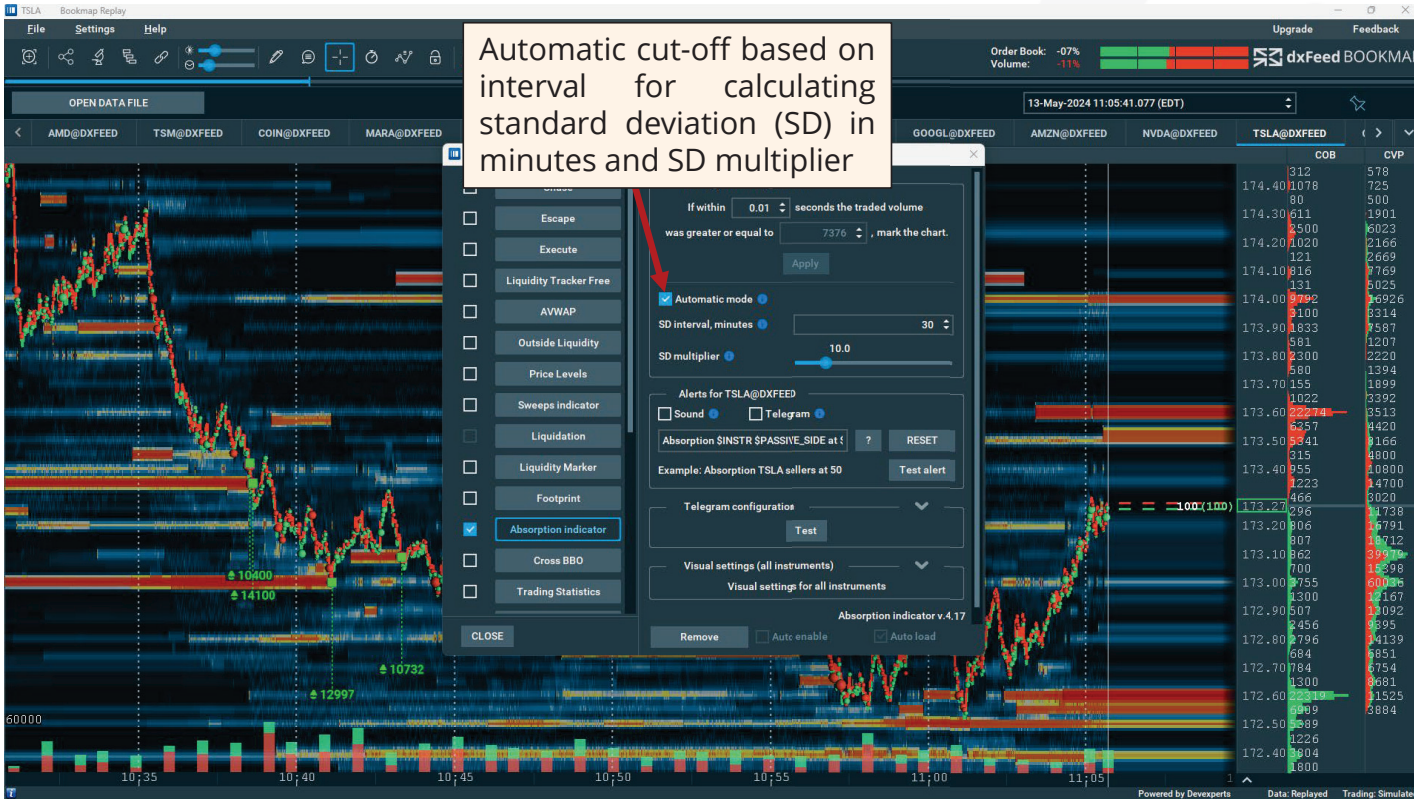
## Absorption indicator identifies where large volume was traded in short pre-defined time frame.



**Absorption indicator** shows where large volume from aggressive buyers or sellers has traded over a short pre-specified time period.



## Absorption indicator identifies where large volume was traded in short pre-defined time frame.



In other words, **absorption indicator** highlights two events:

- 1) Price level where large passive **sell** limit orders (sometimes iceberg orders) **absorb** large aggressive **buy** market orders (**Bearish** sign).
- 2) Price level where large passive **buy** limit orders absorb large aggressive **sell** market orders (**Bullish** sign).



## Absorption indicator on Bookmap chart: **Bullish** absorption.

The **absorption** indicates areas with higher probability that the price action will stall, bounce and move in a new direction.

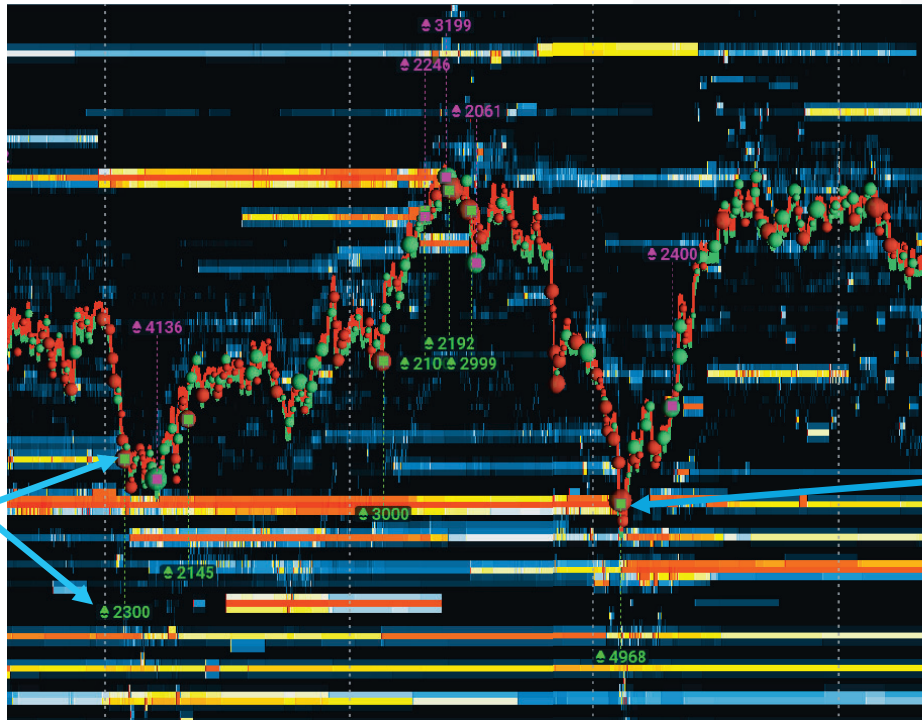


Bullish Limit **Buy** orders absorption (**green** square) of 4,968 shares transacted within 0.05 seconds by the aggressive sellers (**red** 3D bubble) at the **high liquidity** on the **Bid**.



## Absorption indicator on Bookmap chart: **Bullish** absorption.

The **absorption** indicates areas with higher probability that the price action will stall, bounce and move in a new direction.



Bullish Limit **Buy** orders absorption (green square) of 2,300 shares transacted within 0.05 seconds by aggressive sellers (red 3D bubble) at the high liquidity on the **Bid**.

Bullish Limit **Buy** orders absorption (green square) of aggressive sellers (red 3D bubble) at the **high liquidity** on the **Bid**.



## Absorption indicator on Bookmap chart: **Bullish** absorption.

The **absorption** indicates areas with higher probability that the price action will stall, bounce and move in a new direction.



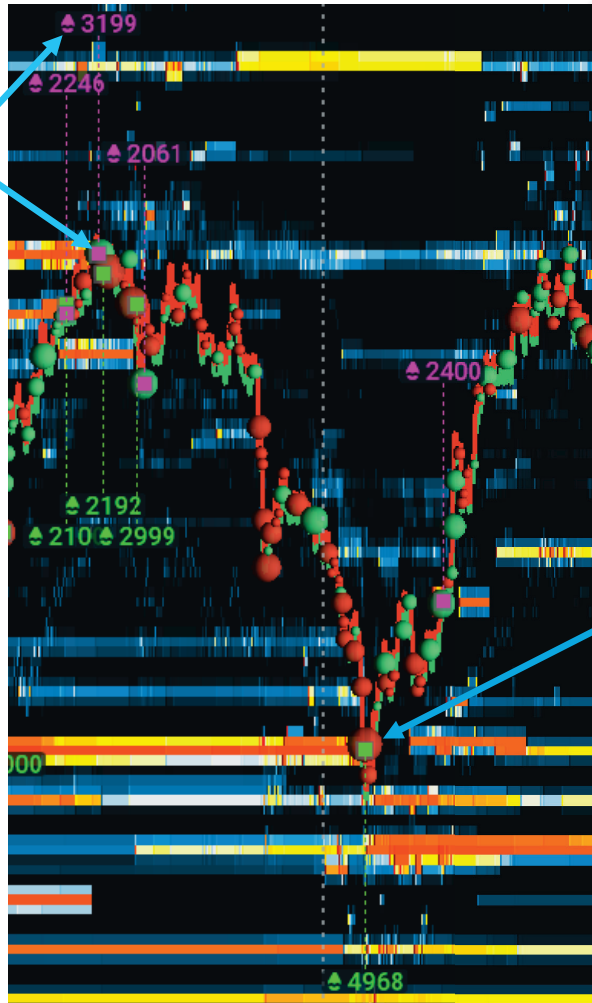
Bullish Limit **Buy** orders absorption (green square) of 2,145 shares transacted within 0.05 seconds by aggressive sellers (red 3D bubble) where there is no apparent liquidity (possible **Iceberg**).

Bullish Limit **Buy** orders absorption (green square) of aggressive sellers (red 3D bubble) at the **high liquidity** on the **Bid**.



## Absorption indicator on Bookmap chart: **Bearish** absorption.

Bearish Limit **Sell** orders absorption (pink square) of 3,199 shares transacted within 0.05 seconds by aggressive buyers (green 3D bubble) at the high liquidity on the Ask.

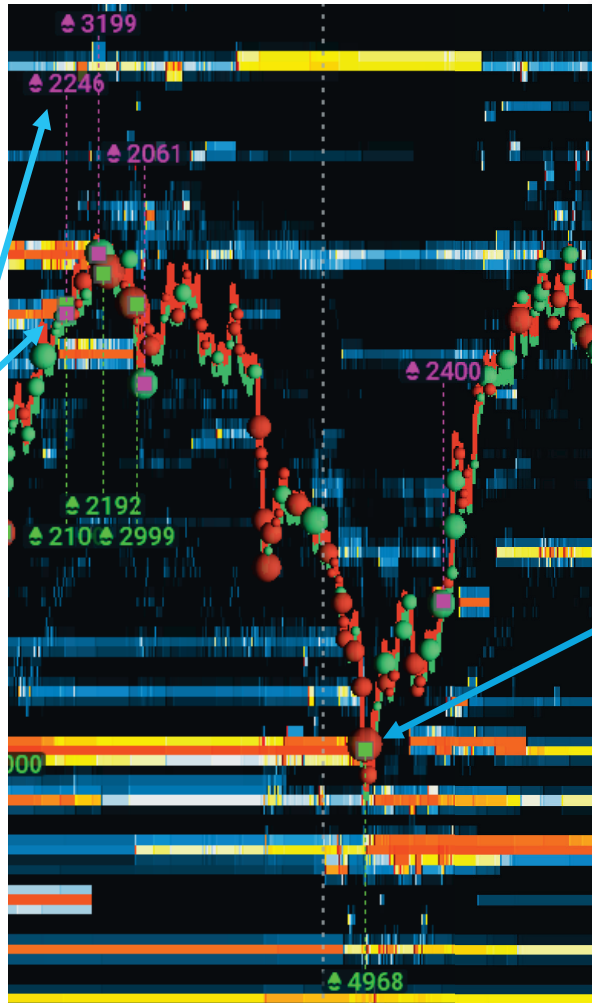


Bullish Limit **Buy** orders absorption (green square) of aggressive sellers (red 3D bubble) at the high liquidity on the Bid.



## Absorption indicator on Bookmap chart: **Bearish** absorption.

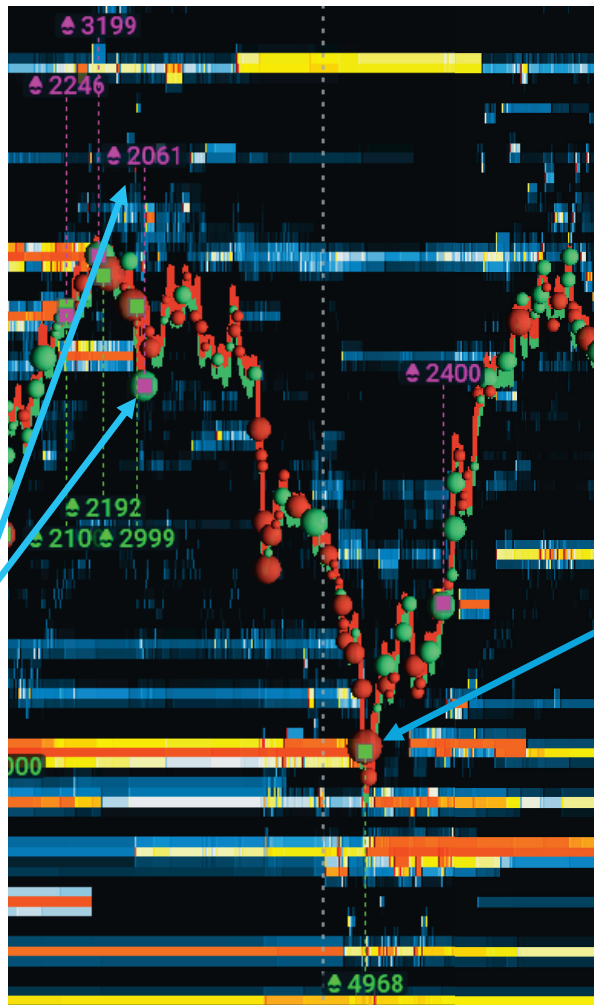
Partial Bearish Limit **Sell** orders absorption (pink square) of 2,246 shares transacted within 0.05 seconds by aggressive **buyers** (green 3D bubble) at the **high liquidity** on the **Ask**.



Bullish Limit **Buy** orders absorption (green square) of aggressive sellers (red 3D bubble) at the **high liquidity** on the **Bid**.



## Absorption indicator on Bookmap chart: **Bearish** absorption.



Partial Bearish Limit **Sell** orders absorption (**pink** square) of 2,061 shares transacted within 0.05 seconds aggressive **buyers** (**green** 3D bubble) where there is no liquidity (possible **Iceberg**).

Bullish Limit **Buy** orders absorption (**green** square) of aggressive sellers (**red** 3D bubble) at the **high liquidity** on the **Bid**.



## Absorption indicator: Advanced settings.

The image displays two screenshots of the 'Configure add-ons (AMD@DXFEED)' window, illustrating the advanced settings for the Absorption indicator.

**Left Screenshot:** Shows the 'Absorption indicator' selected in the left sidebar. A red arrow points to the 'Visual settings (all instruments)' section. A yellow box with the word 'Select' is positioned below this section.

**Right Screenshot:** Shows the detailed visual settings for the Absorption indicator. The settings include:

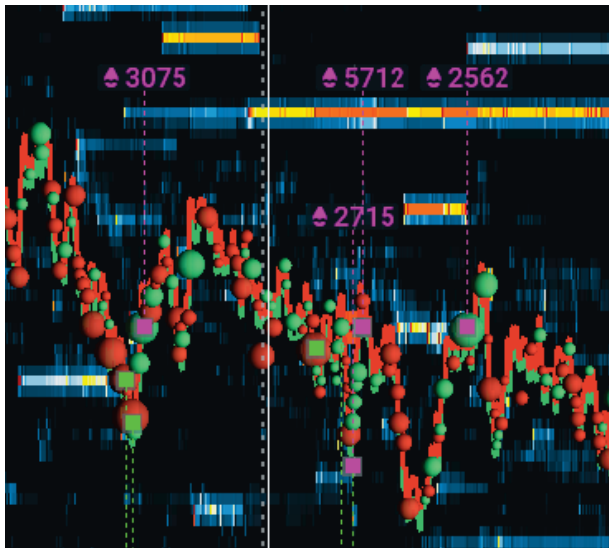
- Visual settings (all instruments):**
  - Show icons
  - Show volume
  - Icons size: 17
  - Icons offset: 151
  - Offset line width: 1
- Passive buyers:**
  - Icon color: Green
  - Text color: Green
- Passive sellers:**
  - Icon color: Purple
  - Text color: Purple
- Background:** Black
- Horizontal aggregation: 0
- Vertical aggregation: 0
- Show trade dots
- Dots size: 13
- Dots shape: RECTANGLE



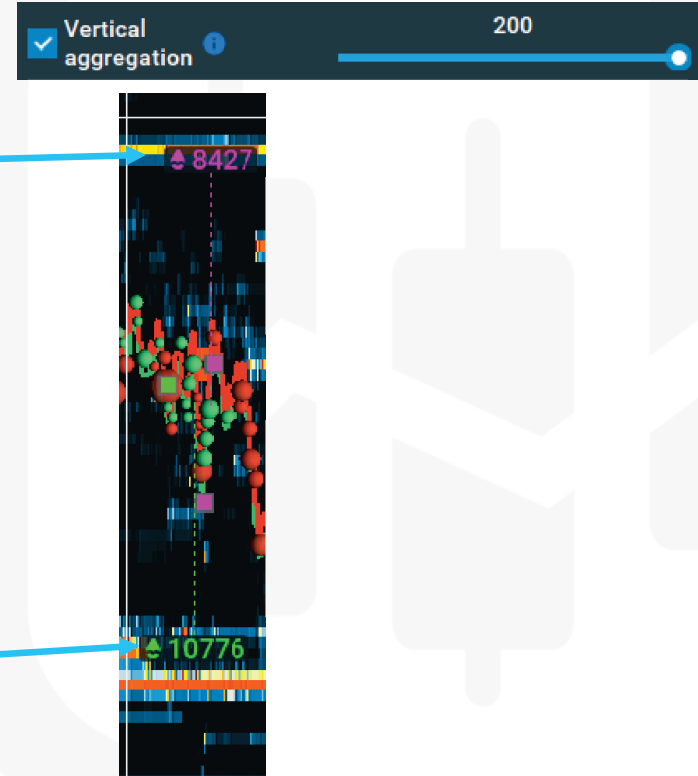
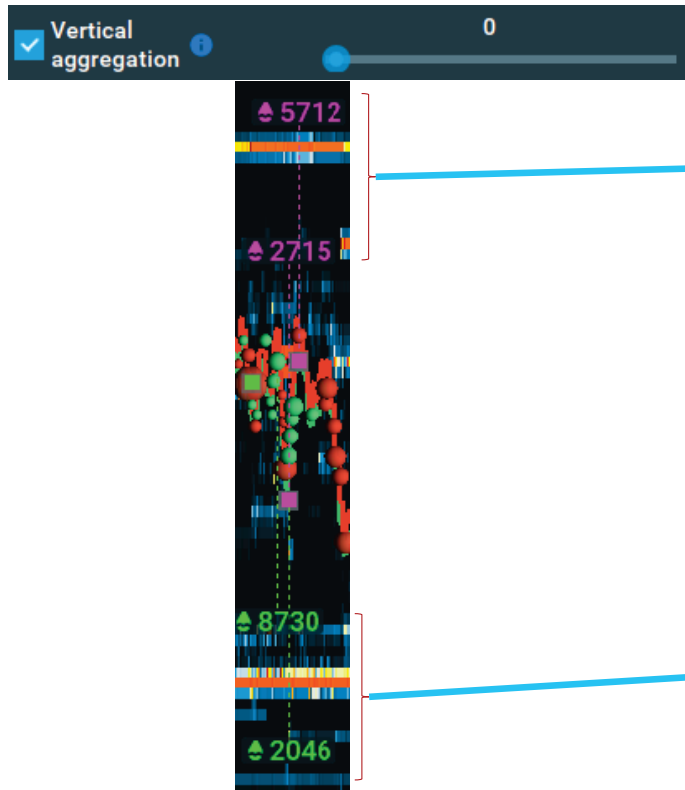
## Absorption indicator: Horizontal aggregation

Horizontal aggregation ⓘ 0

Horizontal aggregation ⓘ 200



## Absorption indicator: Vertical aggregation



# Summary

---

- Absorption indicator reports traded size volume at a price value within a pre-specified time frame.
- **Absorption indicator** highlights possible bullish and bearish events in the market.
- Possible **Bearish** event highlighted by the **Absorption indicator**: Absorption of large number of shares transacted at a price level where large passive **sell** limit orders **absorb** large aggressive **buy** market orders .
- Possible **Bullish** event highlighted by the **Absorption indicator**: Absorption of large number of shares transacted at a price level where large passive **buy** limit orders absorb large aggressive **sell** market orders.

