

# Indicators in Bokmap: Sweeps indicator



**TRADING TERMINAL.COM**  
FROM BEAR BULL TRADERS

Presented by: RTrades (Roko)

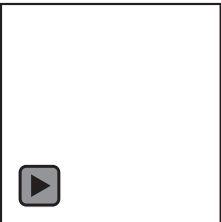


# Outline

---

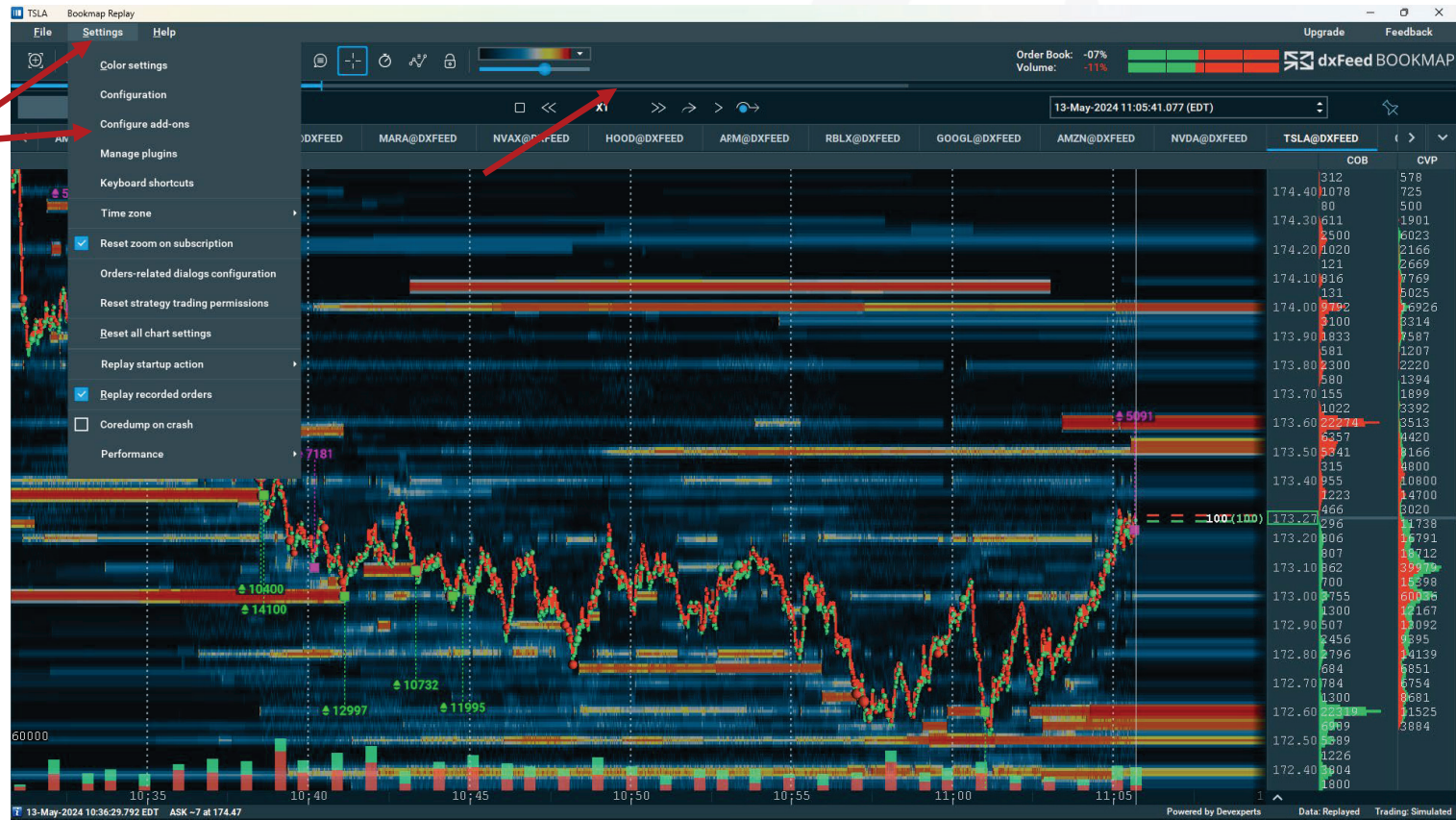
## Indicators in Bookmap:

- Sweeps indicator



# Sweeps indicator

Sweep happens at key price levels and is induced by aggressive **buying** or **selling**.



**Sweeps indicator** identifies where large aggressive liquidity breached the large passive liquidity.

Select

Manually pre-specified time interval for the absorption.

Manual cut-off for the volume absorbed.

Settings for AMD@DXFEED

If within 0.01 seconds the traded volume was greater or equal to 100, mark the chart.

Min price levels 2

Apply

Automatic mode

SD interval, minutes 30

SD multiplier 10.0

Alerts for AMD@DXFEED

Sound  Telegram

Sweep \$INSTR \$SIDE at \$PRICE ? RESET

Example: Sweep AMD buyers at 50 Test alert

Telegram configuration Test

Visual settings (all instruments)

Visual settings for all instruments

Sweeps indicator v.3.16

Remove  Auto enable  Auto load

*Sweeps indicator* shows where large volume from aggressive buyers or sellers breached multiple levels of stacked large limit sell (Ask) or buy (Bid) orders, respectively.



**Sweeps indicator** identifies price level where aggressive volume has pierced through passive volume.

Automatic cut-off based on interval for calculating standard deviation (SD) in minutes and SD multiplier

Settings for AMD@DXFEED

If within 0.05 seconds the traded volume was greater or equal to 5614, mark the chart.

Min price levels 2

Apply

Automatic mode

SD interval, minutes 30

SD multiplier 10.0

Alerts for AMD@DXFEED

Sound  Telegram

Sweep \$INSTR \$SIDE at \$PRICE ? RESET

Example: Sweep AMD buyers at 50 Test alert

Telegram configuration Test

Visual settings (all instruments) Visual settings for all instruments

Sweeps indicator v.3.16

Remove  Auto enable  Auto load

In other words, **sweeps indicator** highlights two events:

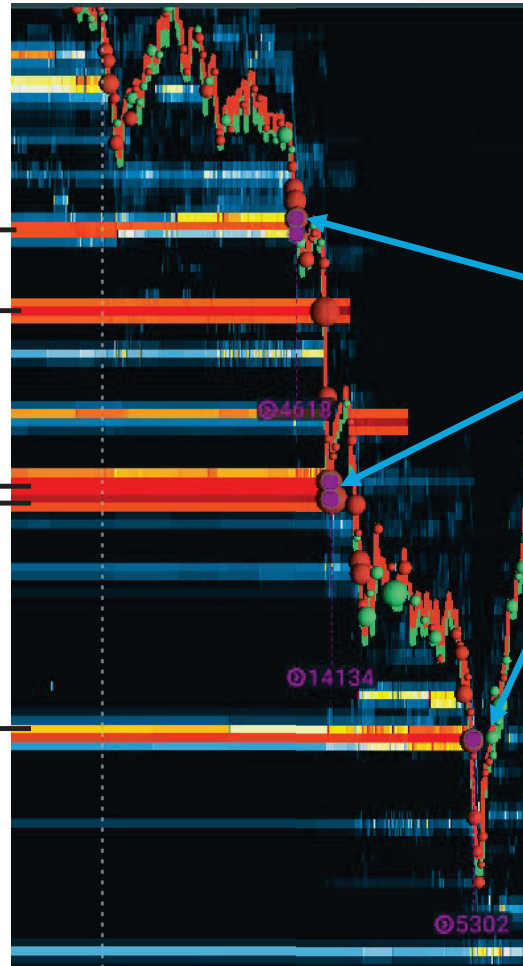
- 1) Price level where large passive **sell** limit orders (sometimes iceberg orders) **are pierced through** by aggressive **buy** market orders (**Bullish** sign).
- 2) Price level where large passive **buy** limit orders **are pierced through** by large aggressive **sell** market orders (**Bearish** sign).



## Sweeps indicator on Bookmap chart: **Bearish sweep.**

The **sweep** indicates areas with higher probability that the price action will pierce through large limit order liquidity.

Large underlying **Bid** orders that are being pierced through by aggressive market **Sell** orders.



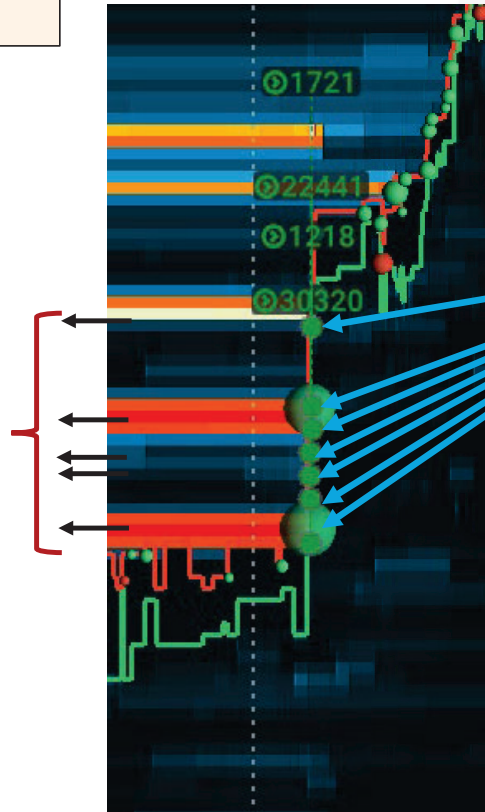
**Bearish sweep (purple circles)** of 4,618, 14,134, and 5,302 shares transacted within 0.05 seconds by the aggressive market orders from **sell**ers (red 3D bubbles) that pierced through the long-term **high liquidity ladder of underlying limit orders** on the **Bid**.



## Sweeps indicator on Bookmap chart: Bullish sweep.

The **sweep** indicates areas with higher probability that the price action will pierce through large limit order liquidity.

Large underlying **Ask** orders that are being pierced through by aggressive market **Buy** orders.



**Bullish sweep (green circles)** of 1,721, 22,441, 1,218, and 20,320 shares transacted within 0.05 seconds by the aggressive market orders from **buyers (green 3D bubbles)** that pierced through the long-term **high liquidity ladder of underlying limit orders** on the **Ask**.



## Sweeps indicator: Advanced settings.

Configure add-ons (ARM@DXFEED)

Settings for ARM@DXFEED

If within  seconds the traded volume was greater or equal to , mark the chart.

Min price levels

Automatic mode

SD interval, minutes

SD multiplier

Alerts for ARM@DXFEED

Sound  Telegram

Sweep \$INSTR \$SIDE at \$PRICE ? RESET

Example: Sweep ARM buyers at 50 Test alert

Telegram configuration Test

Visual settings (all instruments) Visual settings for all instruments

Sweeps indicator v.3.16

CLOSE Remove  Auto enable  Auto load

Select

Configure add-ons (ARM@DXFEED)

Visual settings (all instruments)

Show icons  Show volume

Icons size

Icons offset

Offset line width

Aggressive sellers Aggressive buyers

Icon color

Text color

Background

Horizontal aggregation

Vertical aggregation

Show trade dots

Dots size

Dots shape

Sweeps indicator v.3.16

CLOSE Remove  Auto enable  Auto load



## Sweeps indicator: Horizontal aggregation

Horizontal aggregation ⓘ 0

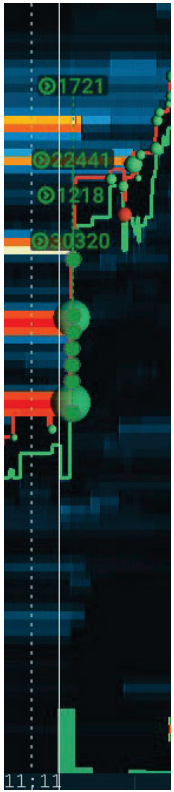


Horizontal aggregation ⓘ 200

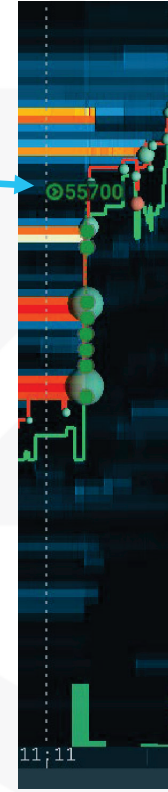


## Sweeps indicator: Vertical aggregation

Vertical aggregation ⓘ 0



Vertical aggregation ⓘ 200



# Summary

---

- Sweeps indicator reports piercing of a price level by a large volume.
- **Sweeps indicator** highlights possible bullish and bearish events in the market.
  - 1) Possible **Bearish** event highlighted by the **Sweeps indicator**: Price level where large passive **buy** limit orders **are pierced through DOWNWARDS** by large aggressive **sell** market orders.
  - 2) Possible **Bullish** event highlighted by the **Sweeps indicator**: Price level where large passive **sell** limit orders **are pierced through UPWARDS** by large aggressive **Buy** market orders.

