



Surviving the Chaos:

How to Trade in the First 5-min

Presented By:

Aiman (AA) and Andrew (AA)





Disclaimer

- BearBullTraders.com employees, contractors, shareholders and affiliates, are **NOT an investment advisory service, a registered investment advisor or a broker-dealer and does not undertake to advise clients on which securities they should buy or sell for themselves.**
- You understand that **NO** content published as part of the BearBullTraders Room and its Website constitutes a recommendation that any particular investment, security, portfolio of securities, transaction or investment strategy is suitable for any specific person.
- You further understand that none of the creators or providers of our Services or their affiliates will advise you personally concerning the nature, potential, value or suitability of any particular investment, security, portfolio of securities, transaction, investment strategy or other matter.



Outline

1. Introduction

- 1. Pro and Cons of Trading the First 5-min of the Open Examples**
- 2. Rule of thumps for new traders**

2. Learn if stocks opens weak or strong

3. Strategies

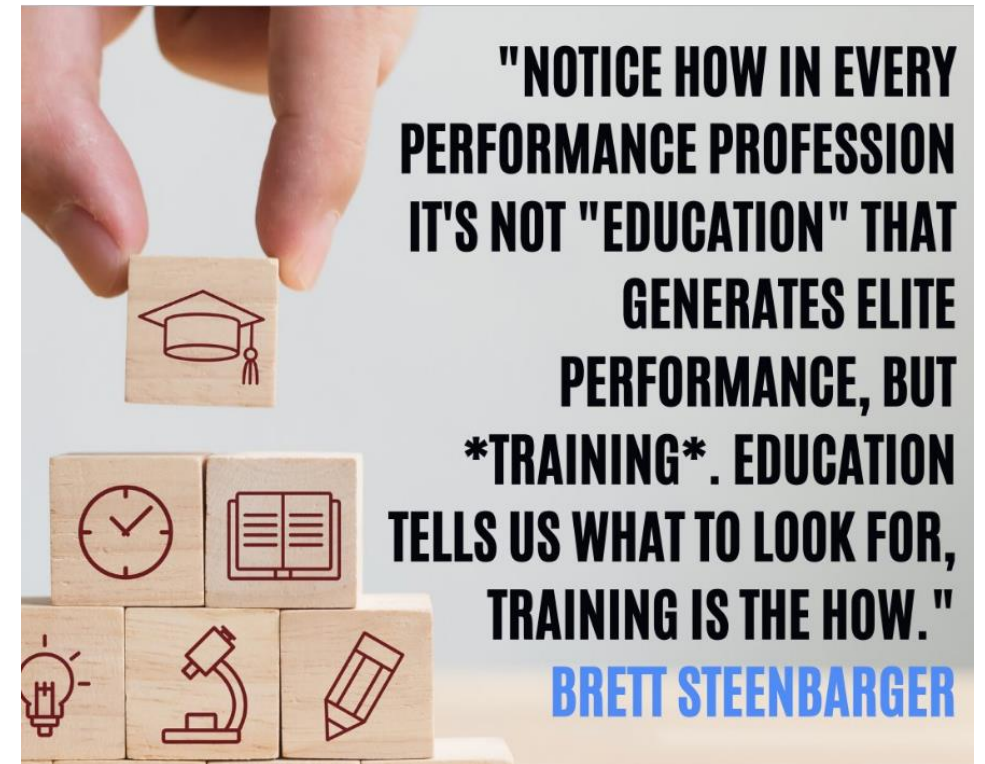
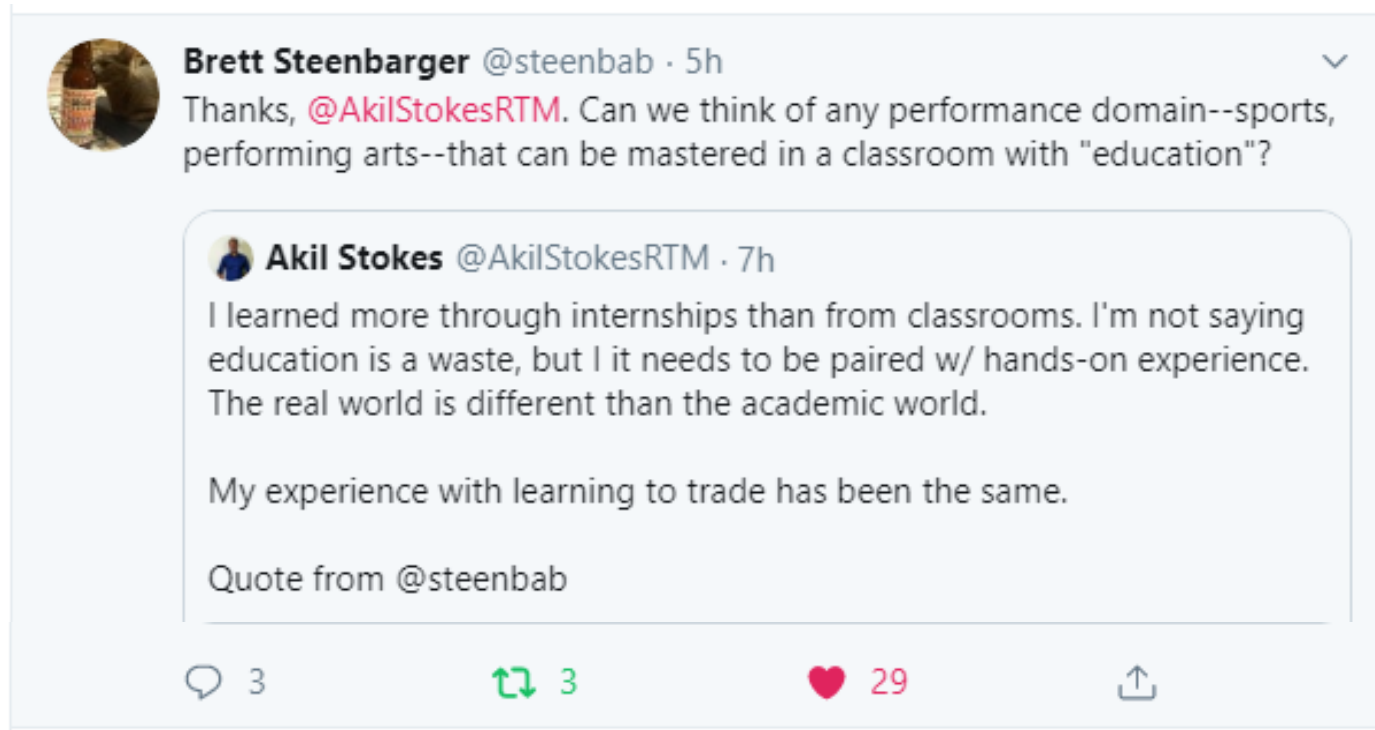
- Rising Devil
- 1-min ORB up or down
- Failed Moves: short and long squeeze

4. Replay Video of Trades



Education then Practice

(there is no secret here. Practice in demo to master the skill)



Hypocrisy to its limits...

In my books and classes I emphasized:

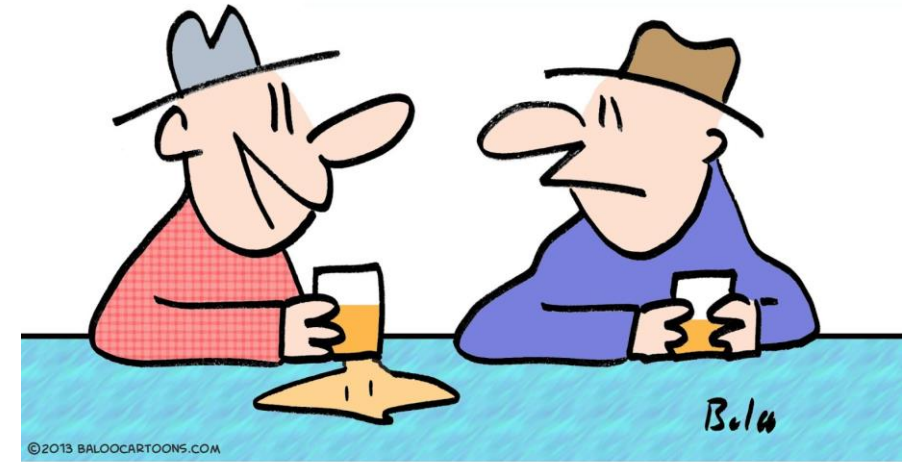
DO NOT TRADE IN FIRST 5 MIN.

But...

- I am not a better trader than 2015.
- I am more of a momentum.
- I have bigger account size.
- I am less patient with my life these days...!

Trading in first 5-min seem to work for me now. It may not work for you and overtime it may not even work for me either!

So constantly RE-EVALAUTE your strategy and performance.



"The best part about being a hypocrite is that you can still denounce hypocrisy."



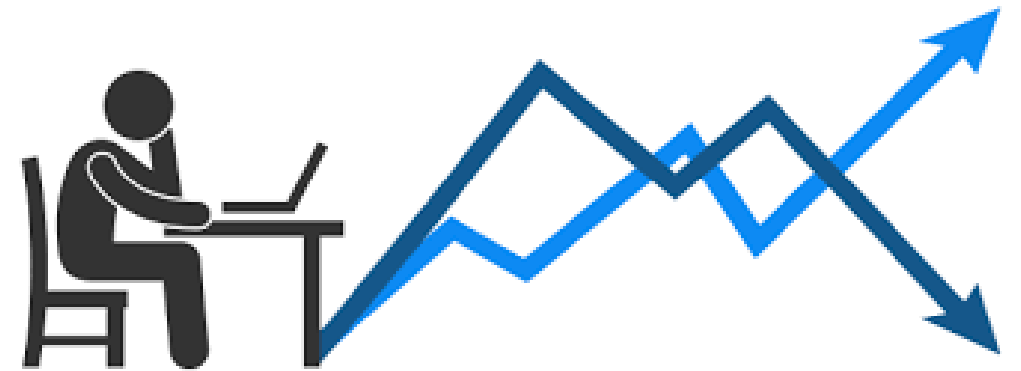
First 5-min of the Open

Advantage:

- ✓ Bigger moves
- ✓ High volume and liquidity
- ✓ Volatility (potential profit)

Disadvantages:

- x Big spreads (sometimes)
- x Volatility (Difficult risk management)



Big Rule of Thumb for Beginners

- Trade in the direction of gap.
 - Stock gapped Up: Look for **LONG**
 - Stock gapped down: Look for **SHORT**



Big Rule of Thumb for Beginners

- You can still trade against the gap direction! But you have a better probability if you trade with tailwind.



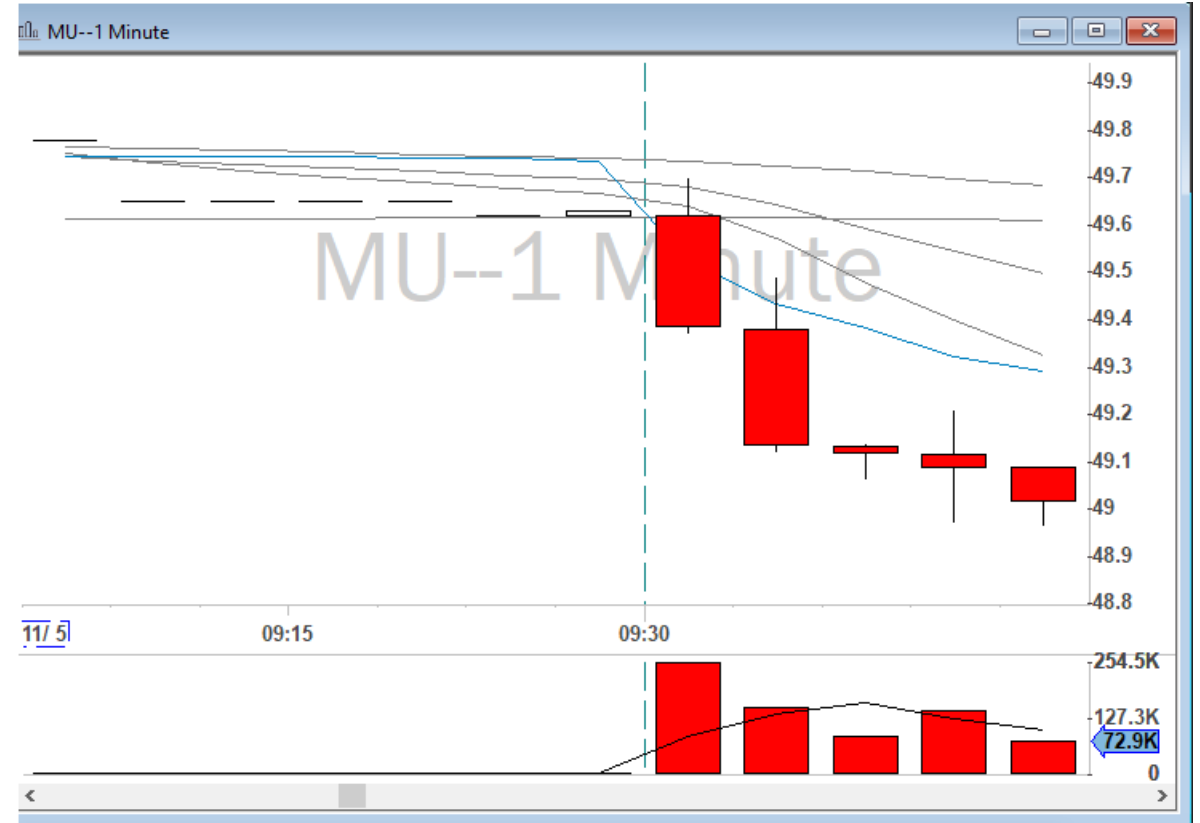
What we mean by saying “Stock Opened Strong”

- “*stock opened strong*”...means the first 1-min candlestick is...
 - White and bullish. No doji. No big high and low wicks.
 - Punches through VWAP and MAs
 - Price action in first 1-min candlestick “ticks” up more than it “ticks” down.

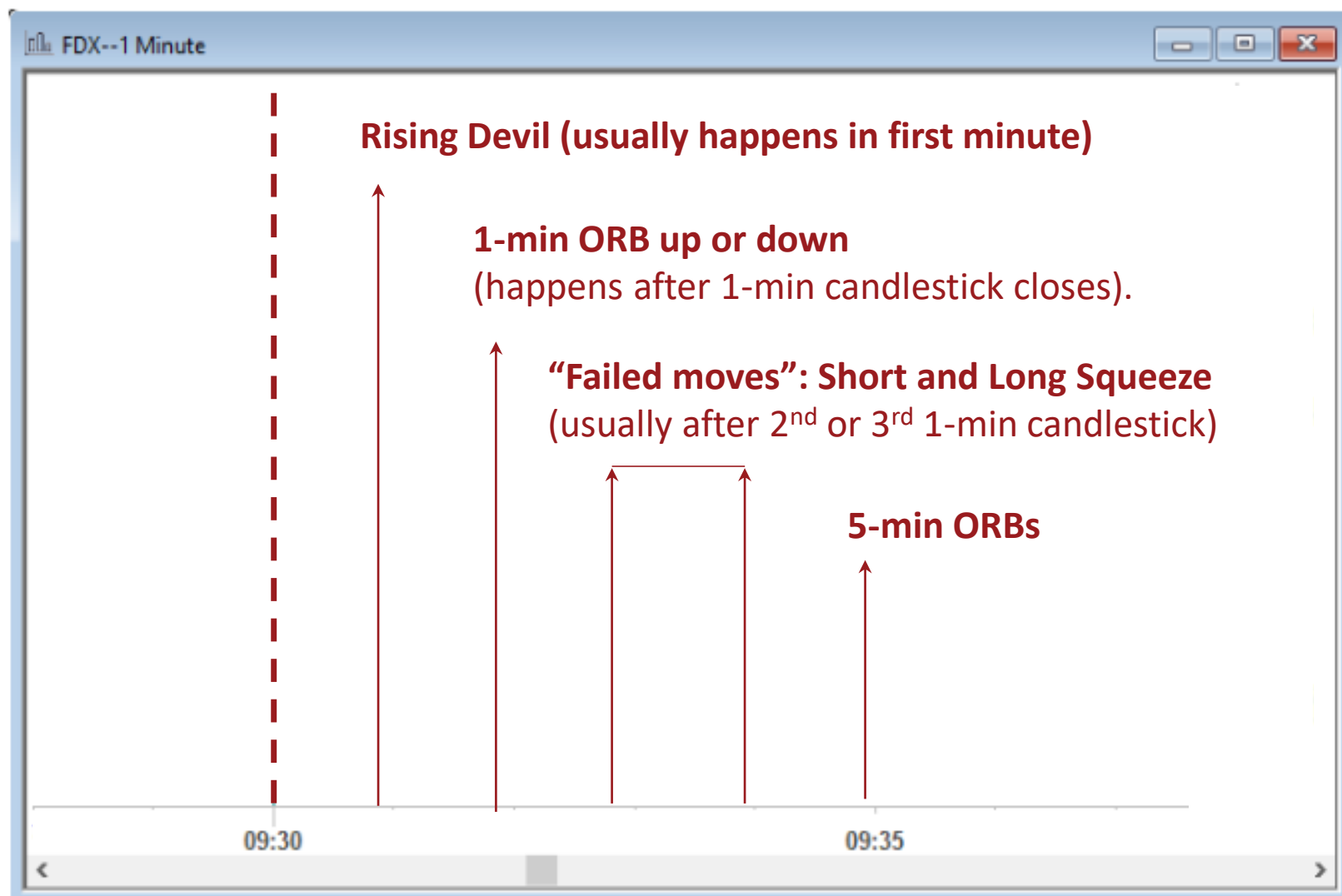


What we mean by saying “Stock Opened Strong”

- “*stock opened weak*”... means the first 1-min candlestick is...
 - Red and bearish. No doji. No big high and low wicks.
 - Loses VWAP and nearby MAs
 - Price action in first 1-min candlestick “ticks” down more than it “ticks” up.



First 5-min Strategies



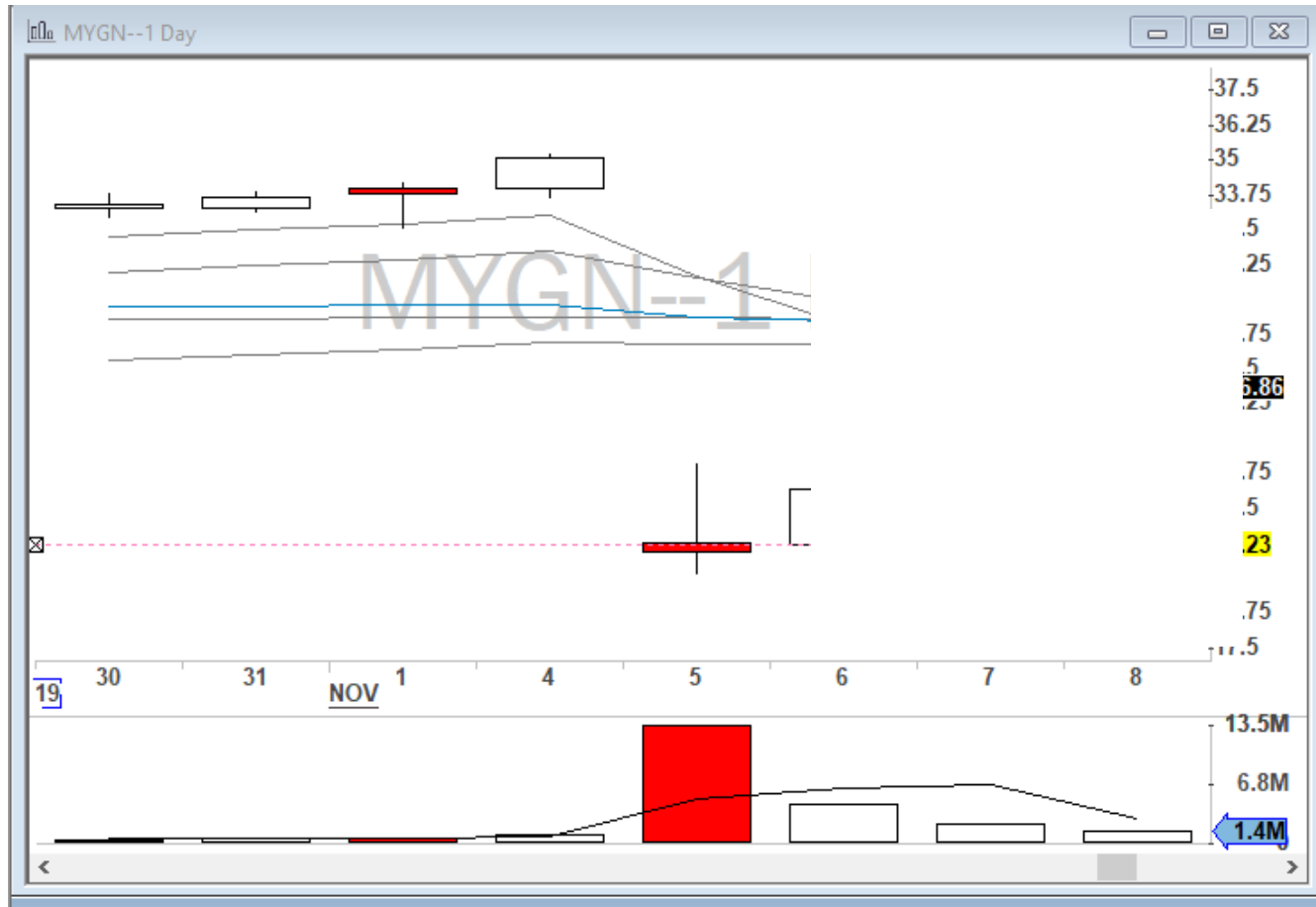
Rising Devil

- Brian coined the name.
- Idea is to short a weak stock when it pops up at the Open (usually in the 1st min)
- Stock has gapped down scientifically.
- Stock has sold off heavily in pre-market stock opens well below VWAP.
- Gap down more than 10% stocks is in SSR (short selling restriction).
- Any pop at the Open can be a good short entry.



Rising Devil

Example: MYGN 5 November 2019

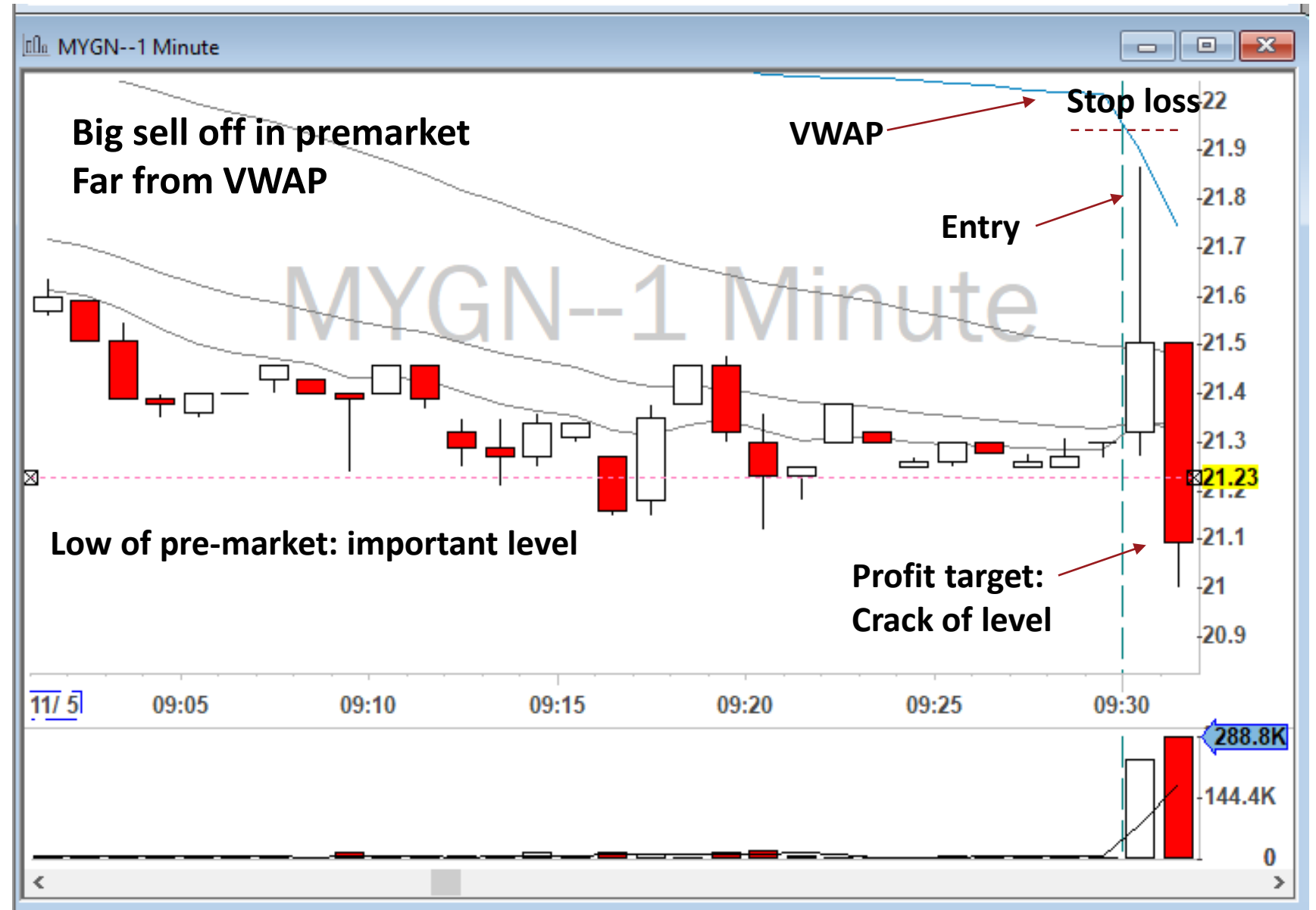


T Gappers (Pre-Market Movers): 9:00:00 - 9:04:59 11/05/2019

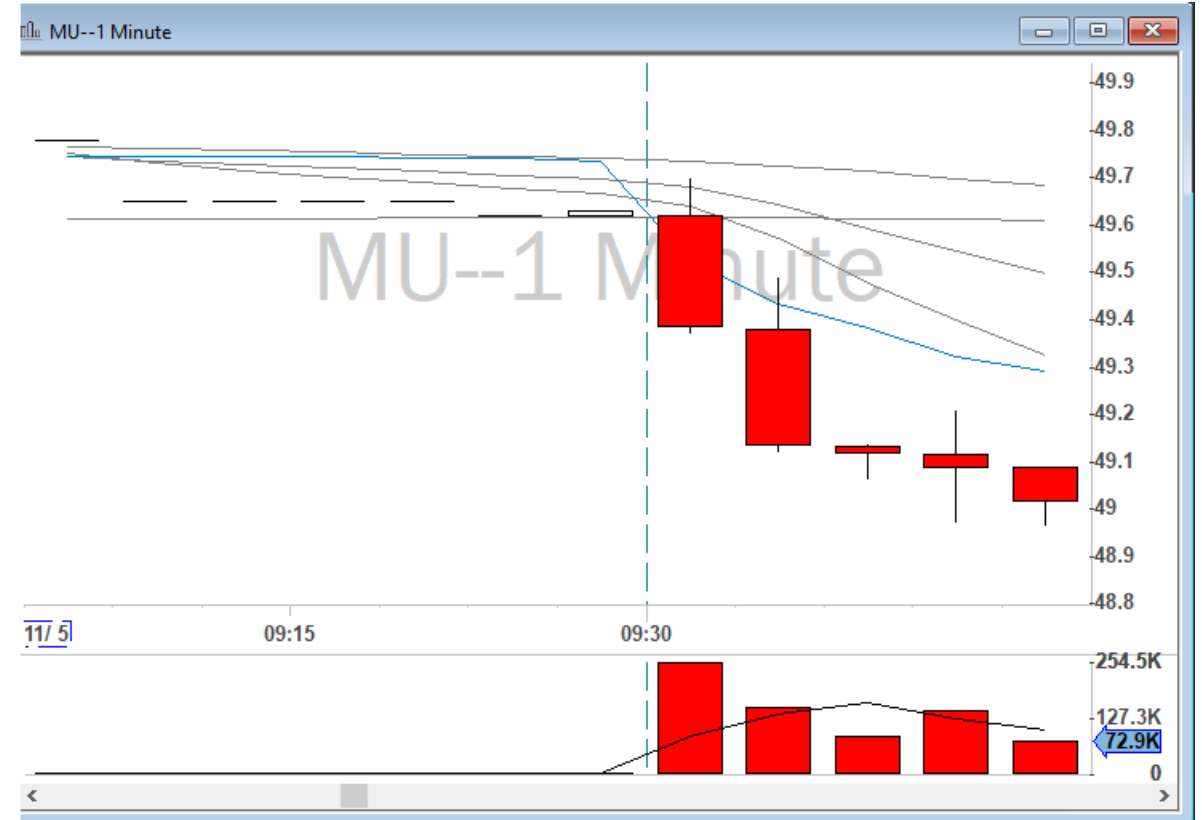
Symbol	Price (\$)	Vol Today	Chg Close	Chg Close	Fit (Shr)	Avg True	Shrt Fit (%)	Sector
EVER	27.77	101,694	6.00	27.6	8.42M	1.11	10.91	Information
CHGG	33.40	125,854	4.07	13.9	115M	0.99	17.76	Educational Services
PCG	7.61	283,014	0.34	4.7	529M	0.86	8.24	Utilities
BYND	82.60	291,083	2.81	3.5	32.7M	8.25	10.20	Manufacturing
AMRN	17.95	743,081	0.50	2.9	328M	0.59		Manufacturing
BHP	52.34	142,326	1.43	2.8	1.47B	0.75		Mining, Quarrying, and Oil and
PTON	25.30	620,944	0.69	2.8	9.97M	1.62	65.46	Retail Trade
BP	40.23	519,324	0.87	2.2	3.59B	0.73		Manufacturing
UBER	28.97	1.53M	-2.11	-6.8	1.10B	1.46	5.63	Professional, Scientific, and Te
SHAK	69.50	401,258	-14.71	-17.5	28.6M	2.73	18.69	Accommodation and Food Ser
MYGN	21.51	611,042	-13.59	-38.7	73.6M	1.18	30.90	Manufacturing



Rising Devil

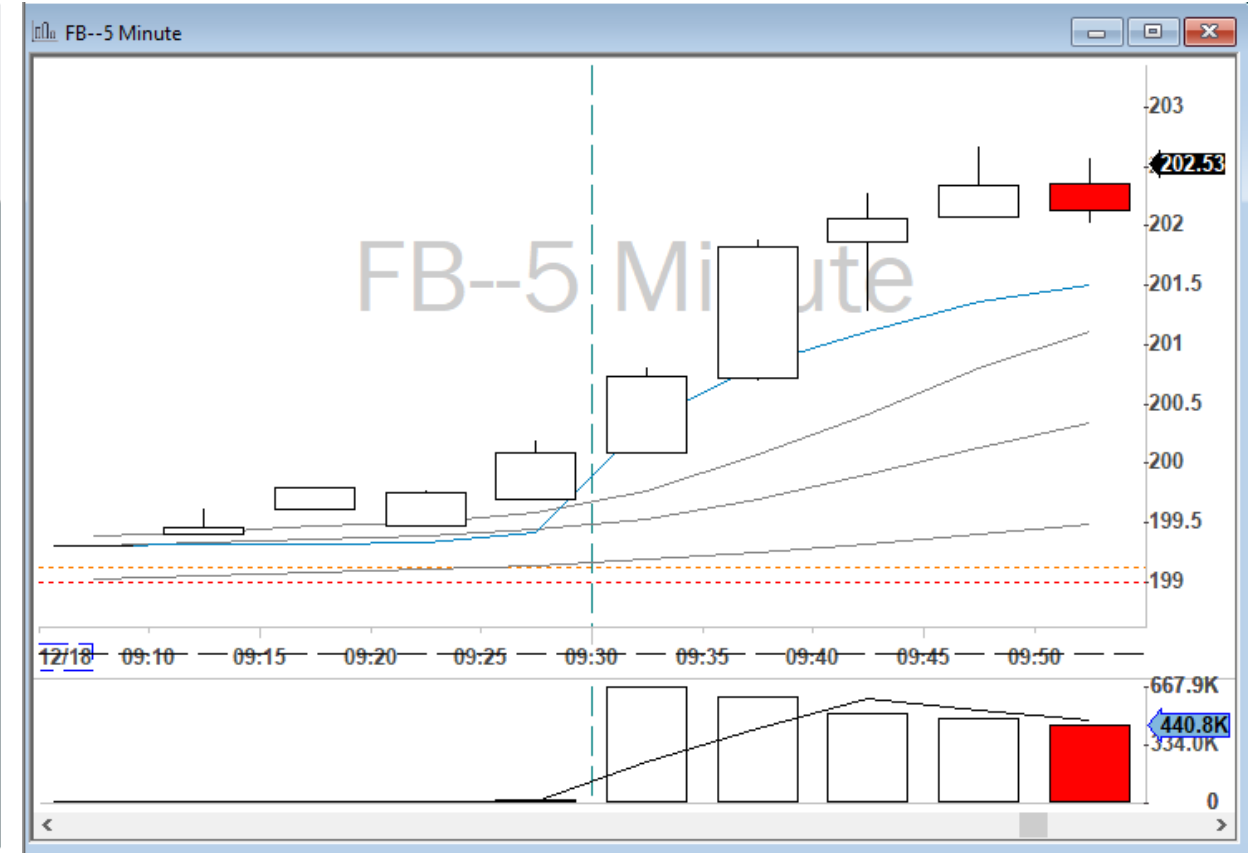
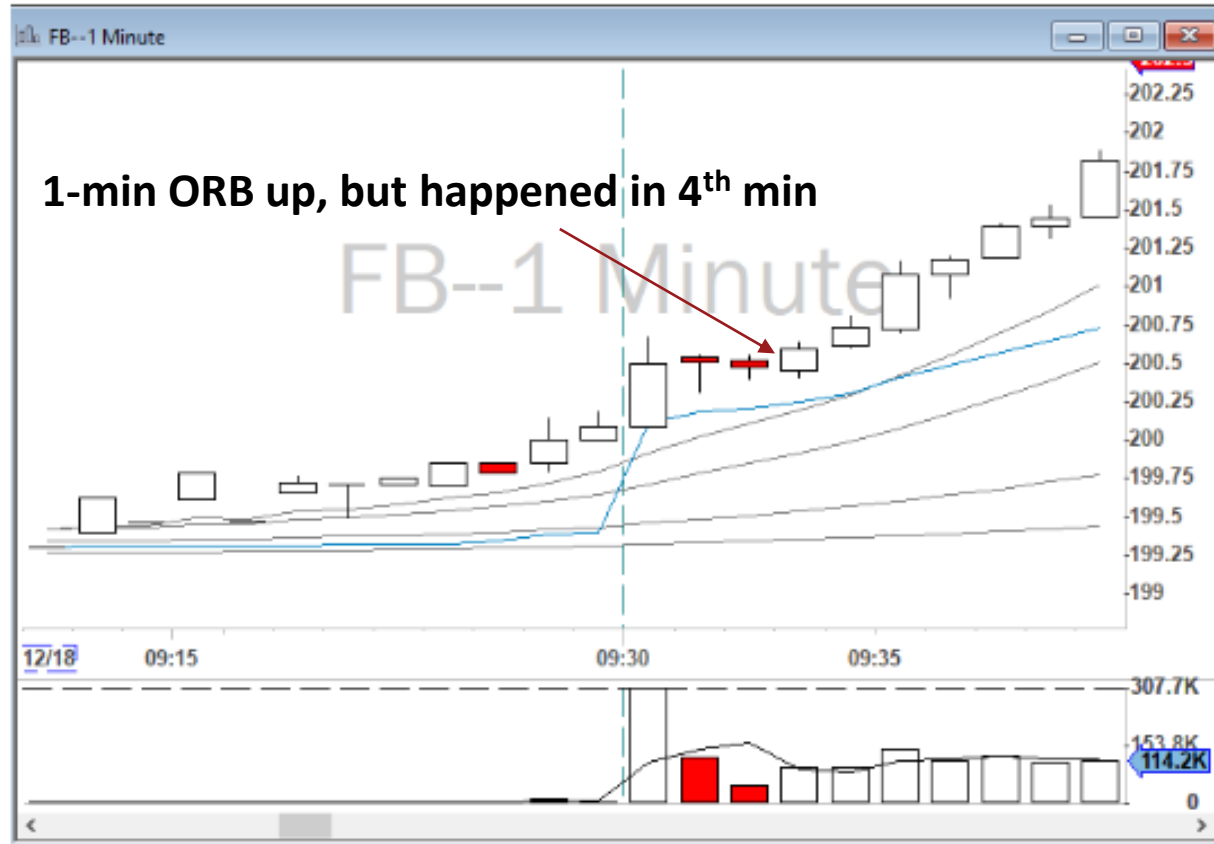


1-min Opening Range Breakout



1-min Opening Range Breakout

Similar to 5-min ORB, 1-min ORB can happen in minute 3, 4.



1-min Opening Range Breakout

- Analysis the stock in the Pre-Market.
- Find important levels, especially high and low of Pre-Markets.
- Observe first 1-min candle sticks (STRONG OR WEAK OPEN).
 - Spread, tick distance, body of first candlestick.
 - Relationship toward VWAP and nearby MAs.
 - is price punching above VWAP, or its losing it?
 - Any big or obvious level 2 signal?
- Take the 1-min Opening Range Break Ups or Down.
Not all breakouts are tradeable.

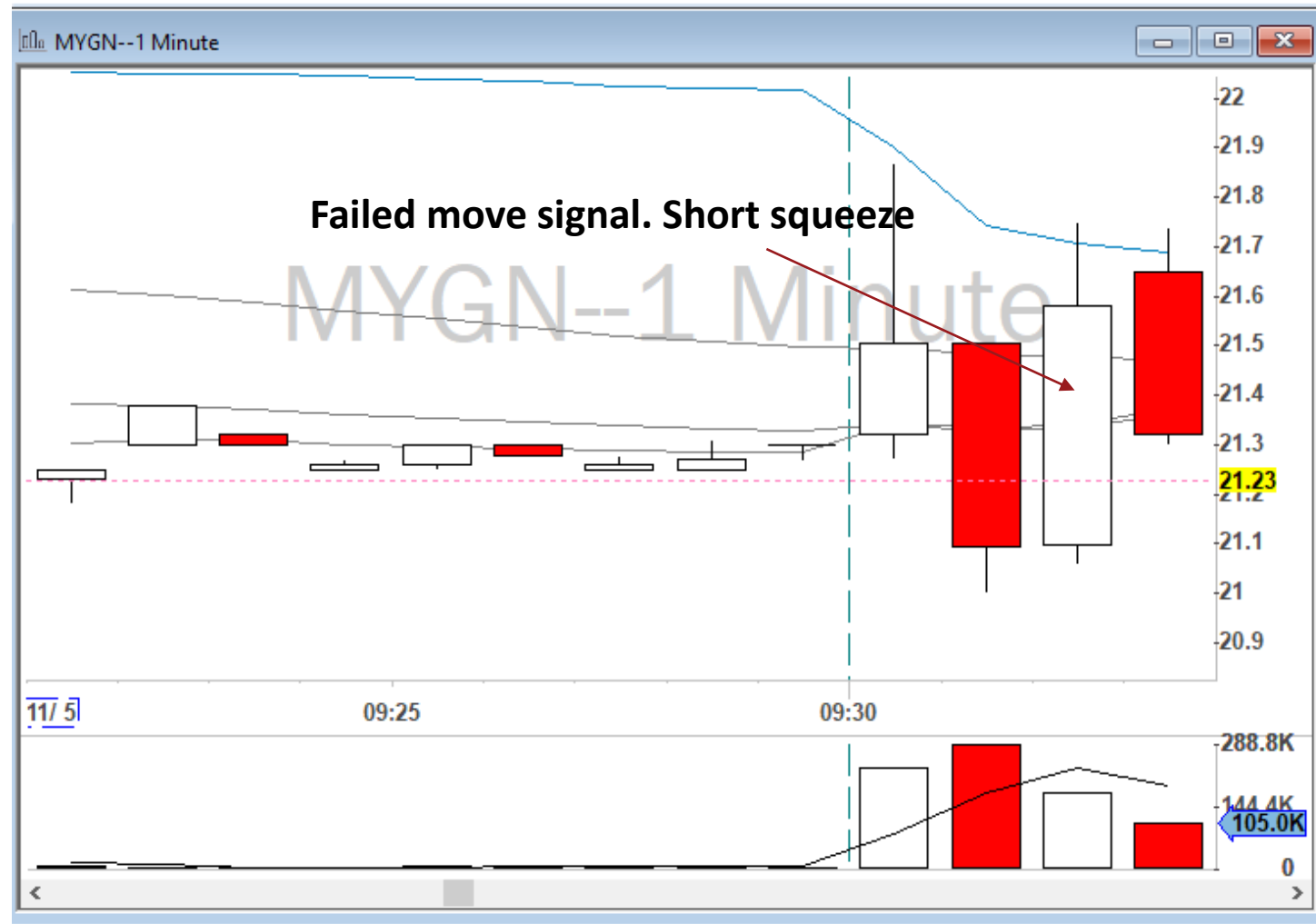


Failed Moves: Short and Long Squeezes

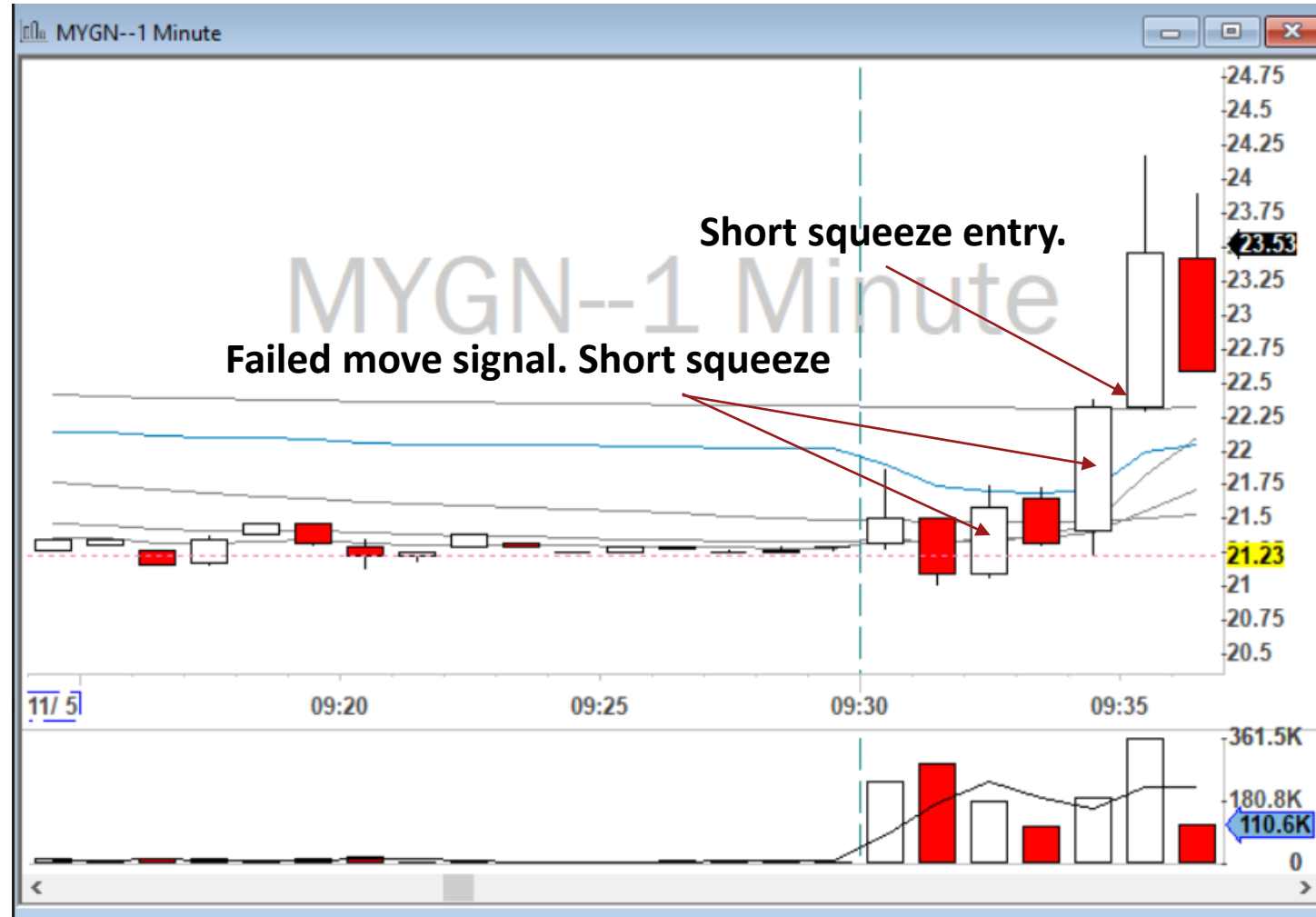
- **“Short Squeeze”** is when short traders are trapped and need to cover.
- **“Long Squeeze”** is when long traders are getting stopped out.
- **Signal** for squeeze is usually a big sudden candle stick.
- Entry can be after the **“signal candle”** with proper stop loss.
- **“Failed Move”** is strategy that had not worked.
- **DO NOT CHASE.** Squeezes usually don’t last.



Failed Moves: Short and Long Squeezes



Failed Moves: Short and Long Squeezes



Failed Moves: Short and Long Squeezes



BA 322.76 -- 322.93 Boeing Com...

BA 326.09 - 320.61 PCL 327 N

Last 322.8313 -4.169 (-1.3%) Vol 4,067,855

Lv1 322.76 322.93 VWAP 322.84 S

MMID	BID	SIZE	MMID	ASK	SIZE
NYSE	322.76	1	NSDQ	322.93	3
NASD	322.76	1	NASD	322.93	3
BATS	322.76	1	ACB	322.93	1
NSDQ	322.76	1	EDGA	322.94	1
ACB	322.76	1	NSDQ	322.95	1
EDGX	322.65	1	ACB	322.99	0
NSDQ	322.60	0	NYSE	323.00	9
NSDQ	322.50	13	NSDQ	323.00	3
ACB	322.50	1	EDGX	323.00	2
NSDQ	322.44	0	BATS	323.00	1
NSDQ	322.40	1	NSDQ	323.04	0
ACB	322.40	1	NSDQ	323.05	1
ACB	322.39	0	ACB	323.10	5
ACB	322.32	0	ACB	323.17	0
EDGA	320.50	1	BYX	323.20	1
IEX	320.00	3	ACB	323.25	0
AMEX	317.94	5	PSX	337.70	1
PSX	312.31	1	NSX	337.70	1

Montage \INET\ARCA



Failed Moves: Short and Long Squeezes



Failed Moves: Short and Long Squeezes



AMRN 21.66 -- 21.67 Amarin Co...

AMRN 22.09 - 21.02 PCL 22.88 Q

Last 21.66 -1.22 (-5.3%) Vol 9,212,444

Lv1 21.66 21.67 VWAP: 21.542 S

MMID	BID	SIZE	MMID	ASK	SIZE
NASD	21.66	3	EDGX	21.67	11
NSDQ	21.66	3	NASD	21.67	5
NSDQ	21.65	15	NSDQ	21.67	5
EDGX	21.65	13	BATS	21.67	4
BATS	21.65	5	NYSE	21.67	3
PSX	21.65	3	BYX	21.67	1
ACB	21.65	3	NSX	21.67	1
NSDQ	21.64	9	IEX	21.67	1
ACB	21.64	2	ACB	21.67	1
NSDQ	21.63	15	NSDQ	21.68	10
NSDQ	21.62	12	PSX	21.68	2
NYSE	21.62	1	NQBX	21.68	2
BYX	21.62	1	AMEX	21.68	1
EDGA	21.61	1	ACB	21.68	0
ACB	21.61	1	NSDQ	21.69	16
ACB	21.60	4	ACB	21.69	2
NQBX	21.57	1	NSDQ	21.70	15
ACB	21.56	1	ACB	21.70	1

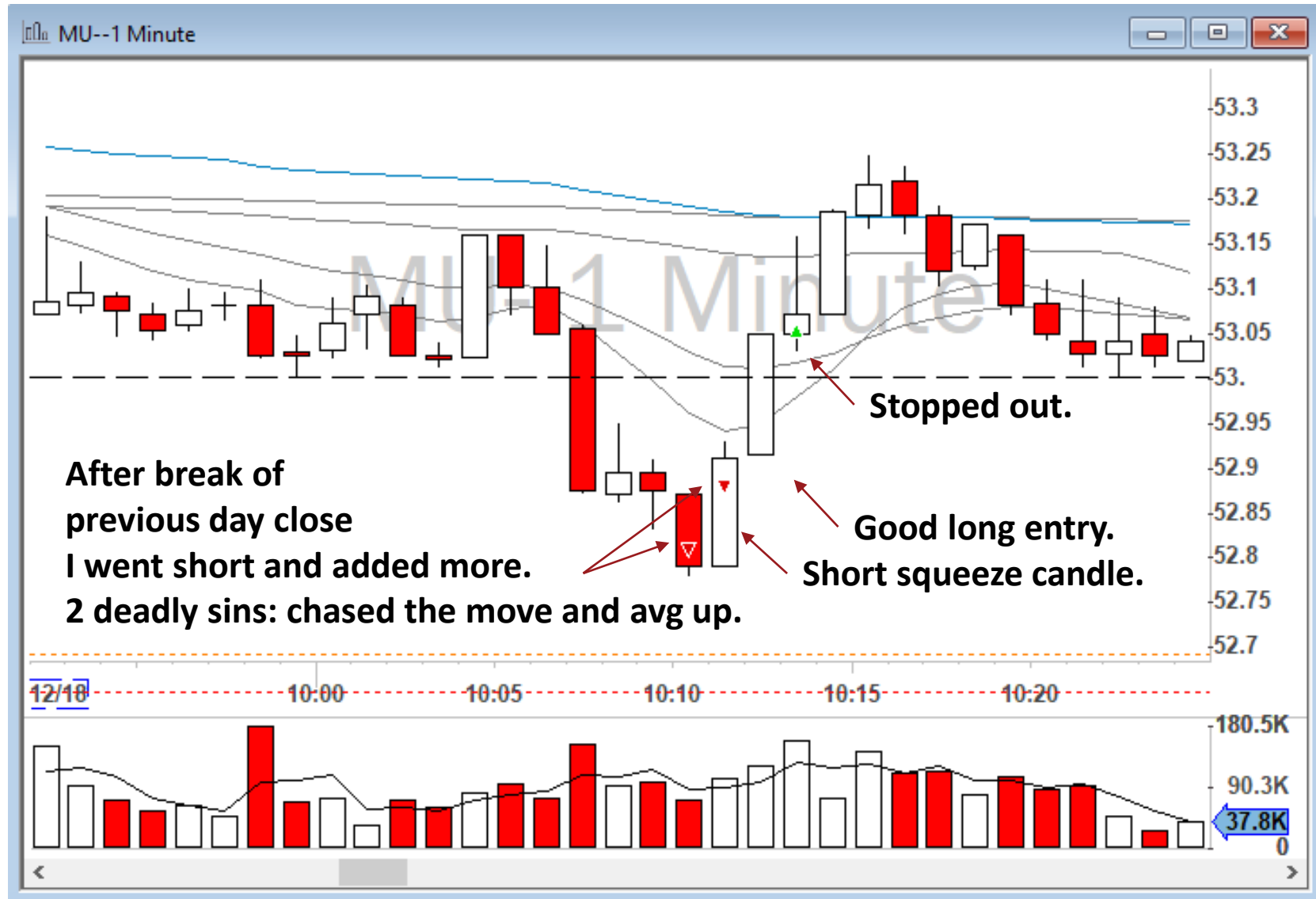
Montage INET ARCA



Failed Moves: Short and Long Squeezes



Failed Moves and Squeezes can happen all the time.



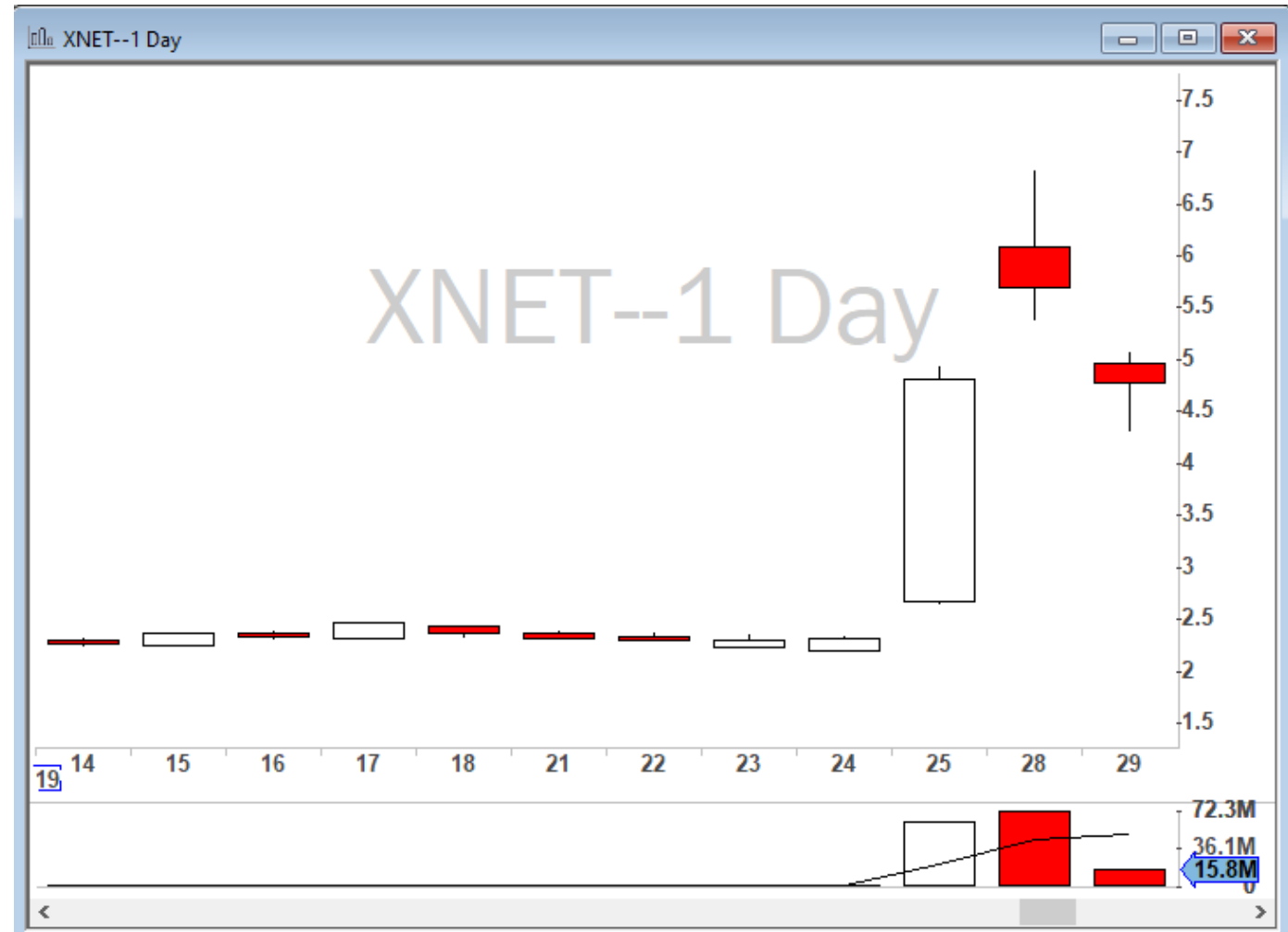
Examples and Live Trades



2) Examples: XNET

Analysis:

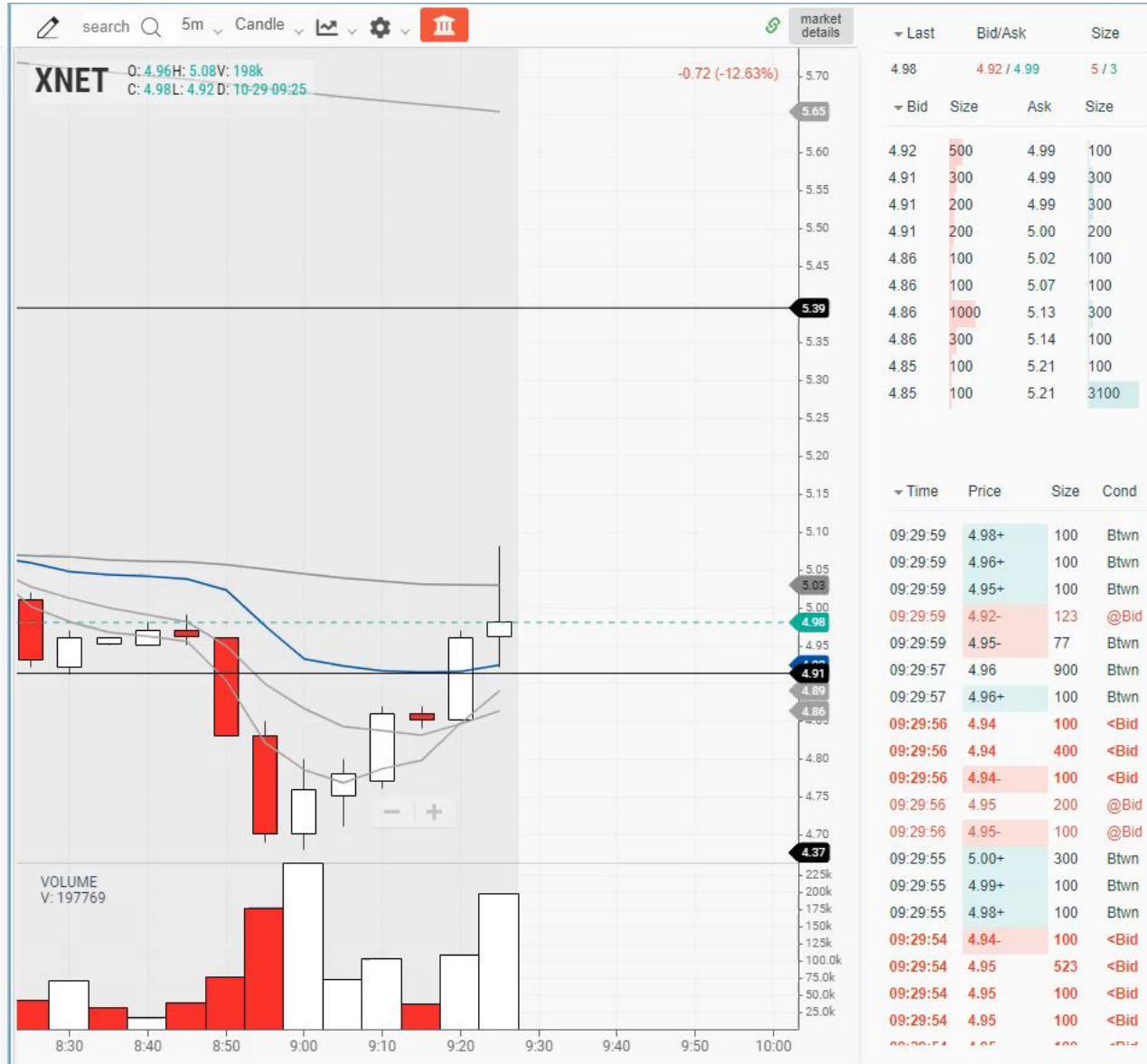
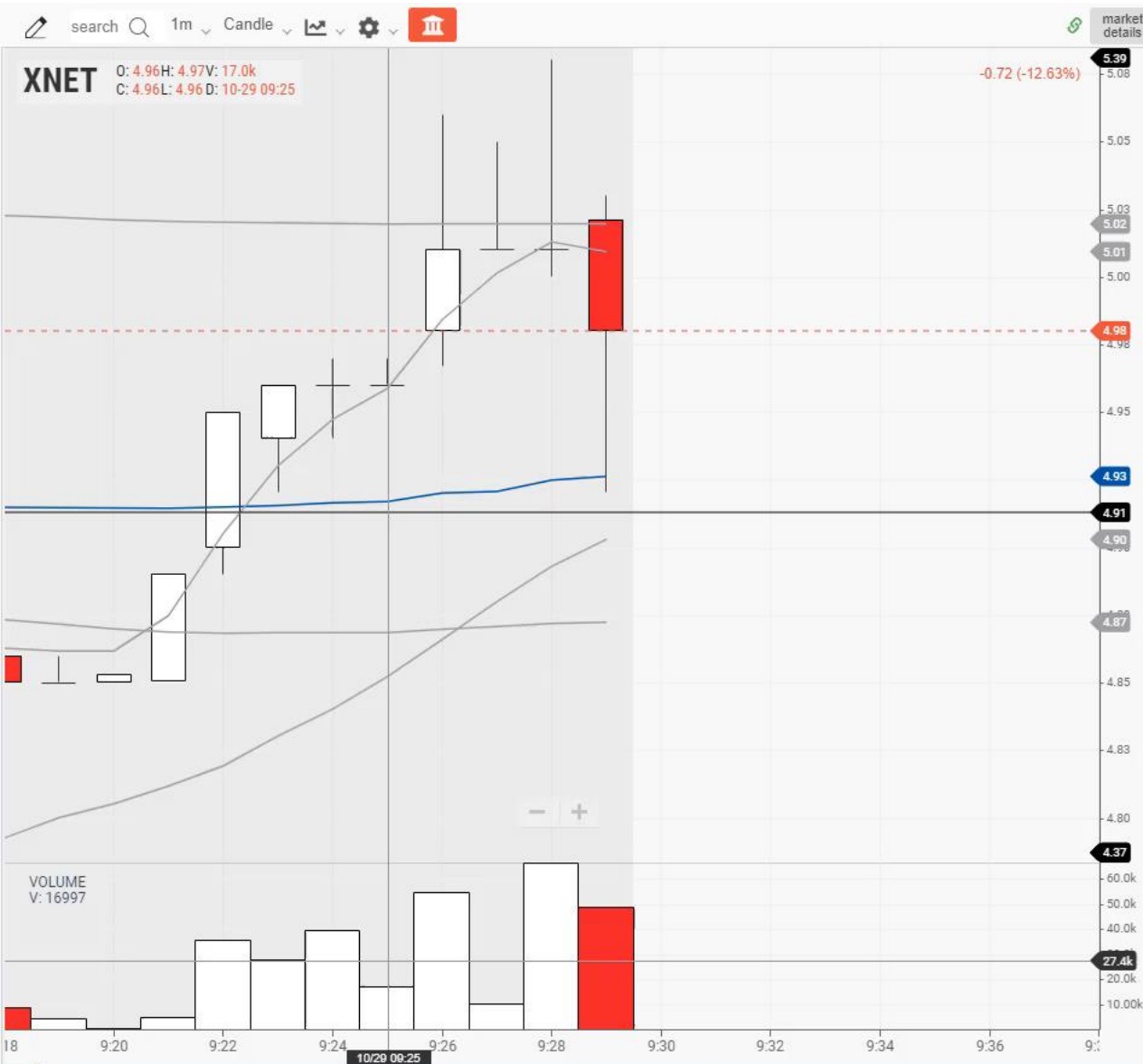
- XNET was in play Nov 25, and 26th 2019. on Nov 29th gapped down.
- It opened weak and held below VWAP and all the MA's



Examples: XNET 1-min ORB down



Examples: XNET 1-min ORB down



Examples: KHC 31 October 2019



T Gappers (Pre-Market Movers): 9:00:00 - 9:04:59 10/31/2019

Symbol	Price (\$)	Vol Today	Chg Close	Chg Close	Flt (Shr)	Avg True	Shrt Flt (%)	Sector
DRNA	18.10	141,421	2.36	15.0	56.7M	0.61	7.70	Professional, Scientific, and Te
SPWR	9.45	129,371	1.05	12.5	141M	0.54	32.62	Manufacturing
XNET	5.53	482,779	0.44	8.6	59.4M	0.58		Information
KHC	30.66	704,825	2.16	7.6	1.22B	0.54	2.93	Manufacturing
LITE	61.00	125,431	3.80	6.6	63.1M	1.58	8.92	Manufacturing
FB	196.37	934,401	8.12	4.3	2.39B	4.75	1.10	Information
LYFT	45.82	301,633	1.71	3.9	195M	1.69	9.60	Transportation and Warehousi
ABMD	187.06	156,471	5.29	2.9	44.4M	6.35	7.36	Manufacturing
X	11.65	101,625	-0.36	-3.0	170M	0.67	32.58	Manufacturing
PCG	5.92	583,558	-0.22	-3.6	529M	0.84	8.24	Utilities
CROX	36.00	242,012	-2.53	-6.6	68.2M	1.38	13.31	Manufacturing
TWLO	100.51	200,205	-7.19	-6.7	108M	4.38	16.09	Manufacturing
WDC	57.56	453,771	-4.60	-7.4	290M	1.72	4.84	Manufacturing
HBI	14.59	260,617	-1.44	-9.0	358M	0.52	17.30	Manufacturing
ETSY	47.70	118,117	-5.10	-9.7	119M	2.28	11.88	Retail Trade
W	84.30	1.12M	-16.78	-16.6	60.3M	6.08	32.64	Retail Trade
MMSI	20.10	224,667	-9.01	-31.0	53.1M	0.79	9.54	Manufacturing

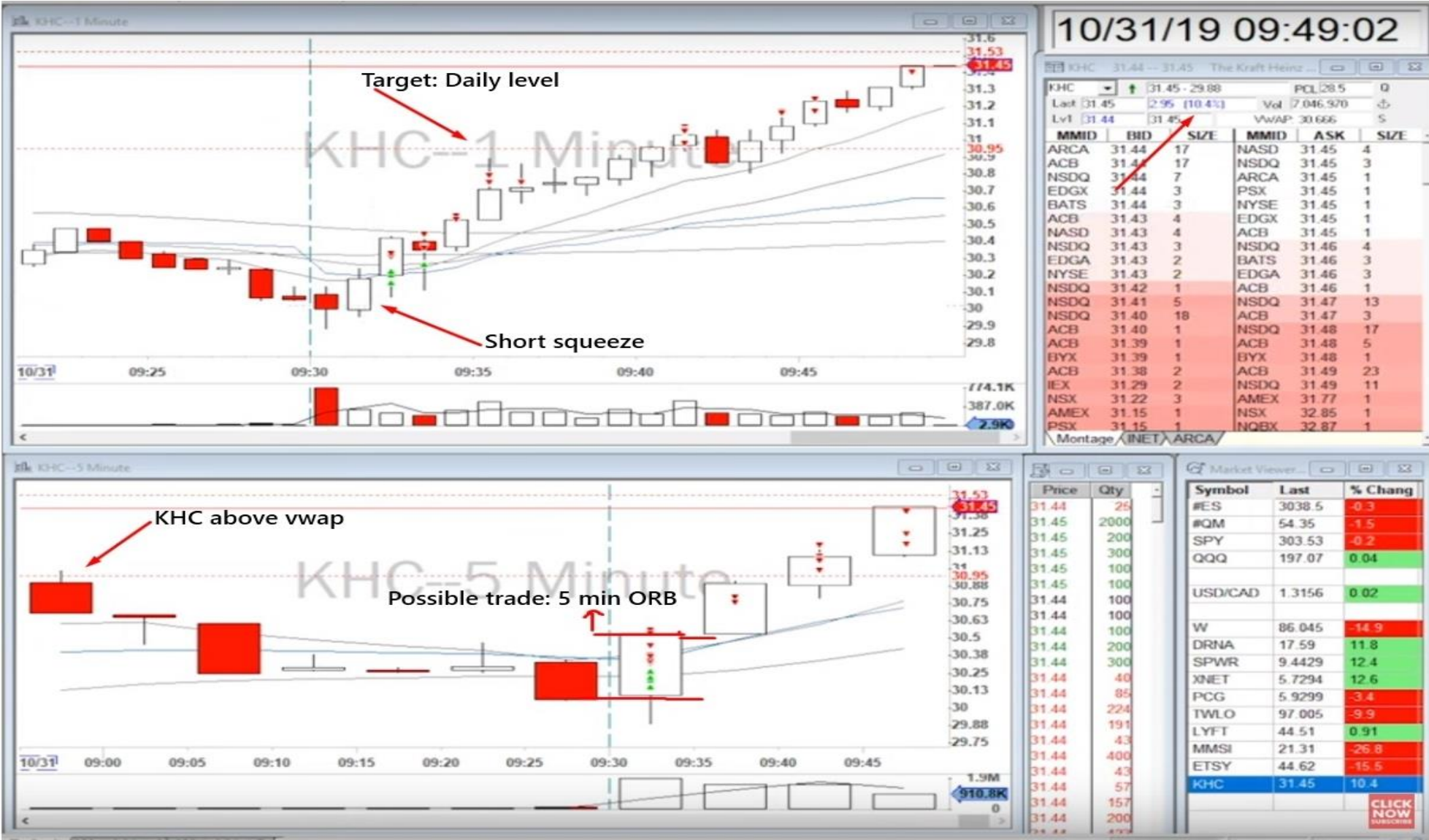


Examples: KHC 31 October 2019

- KHC was above the VWAP for the pre-market, but eventually dropped below VWAP.
- It opened “kind of weak”, but no 1-min ORB down.
- On 2nd minute it squeezed above VWAP.
- Squeeze candle and close above VWAP is a good indicator for a short squeeze long trade
- Trade can be labeled as 1-min ORB up too.



Examples: KHC 31 October 2019

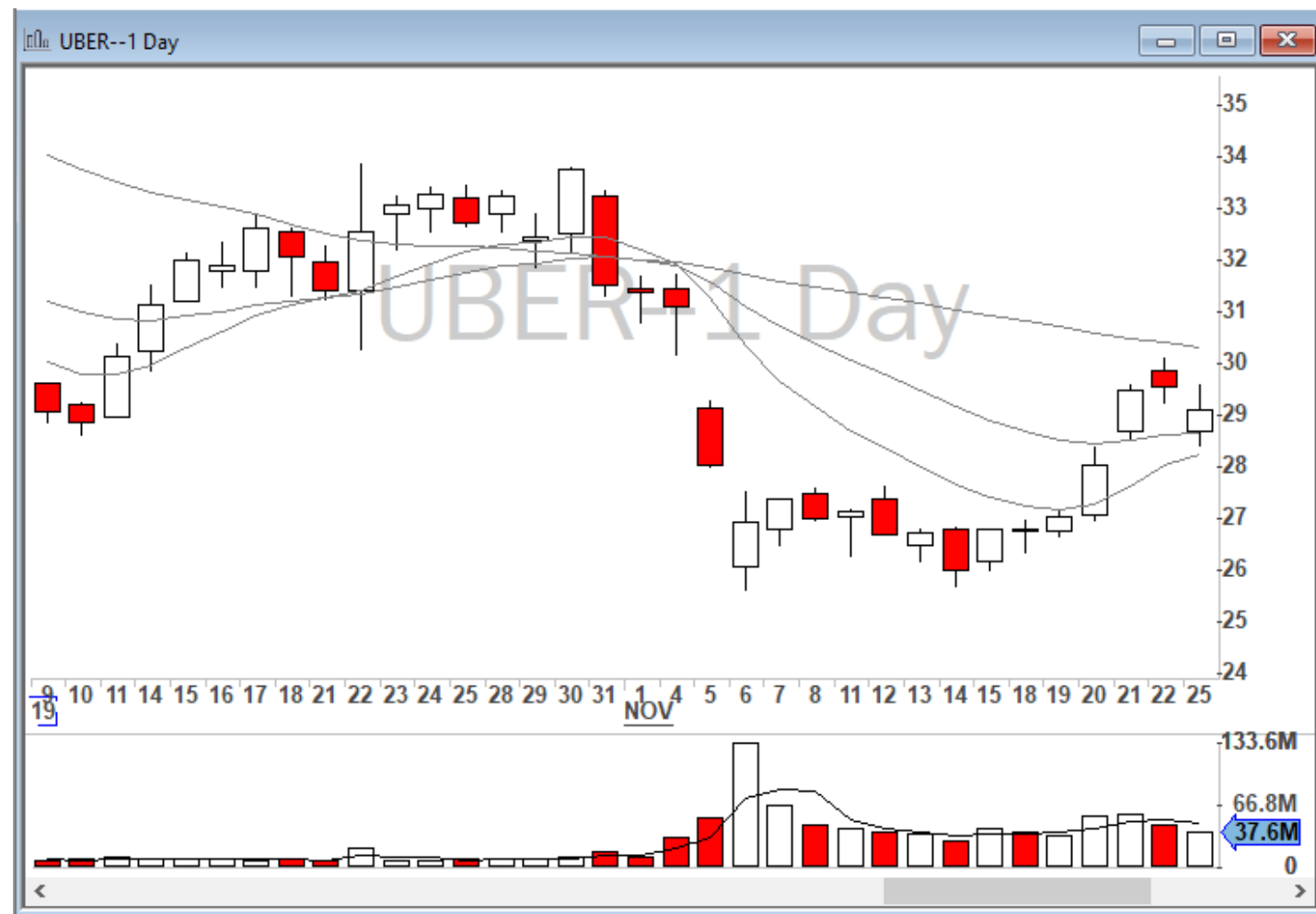


Examples: KHC 31 October 2019

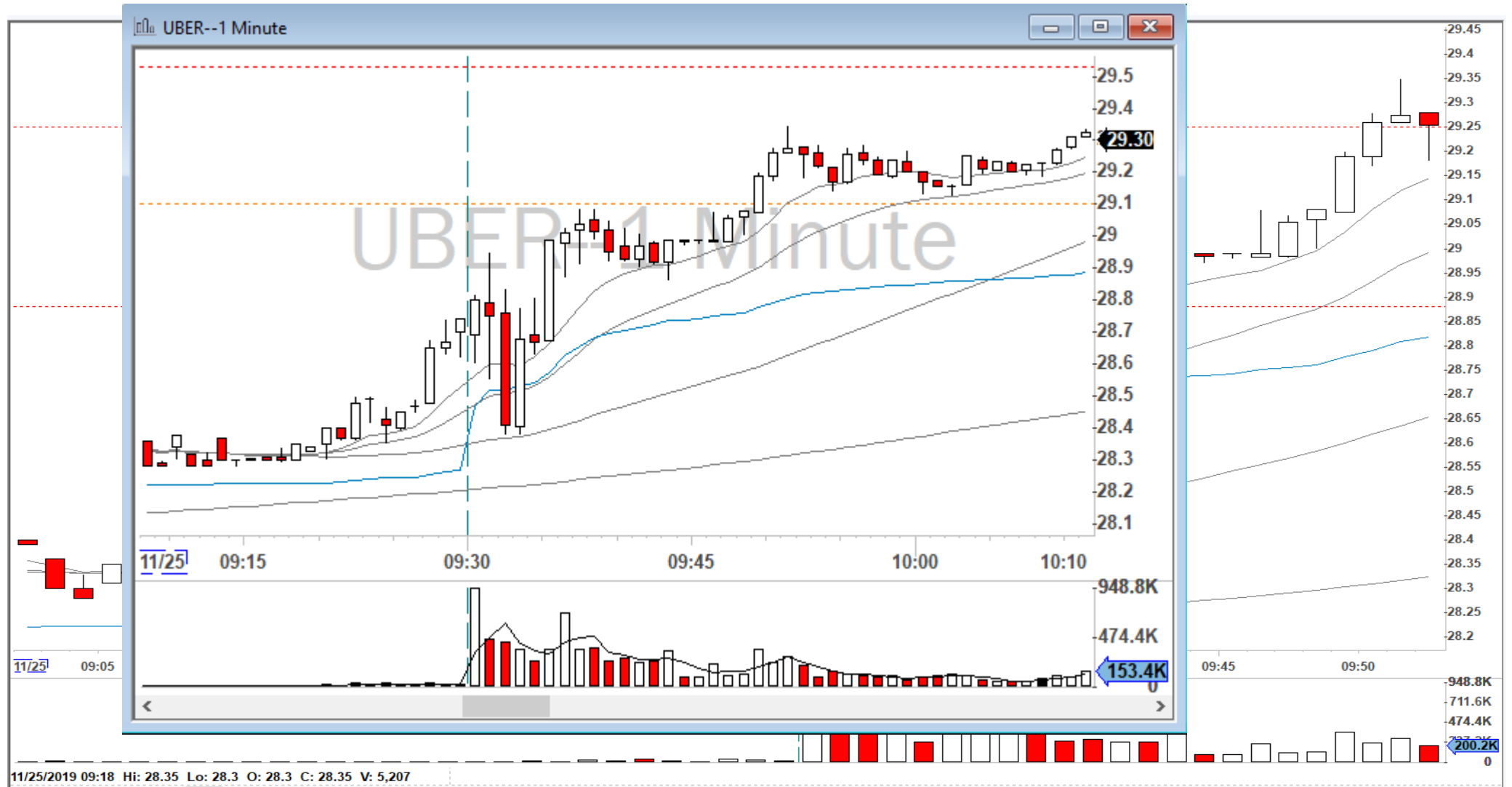


Example UBER 25 November 2019

- It was in play in November trading with huge volume
- It held above VWAP at the premarket
- Opened weak and reached 50 SMA on the 1 and held it
- The fourth minute it did an engulfing which
- Was and indicator of strength



Examples: UBER Short Squeeze



2) Examples



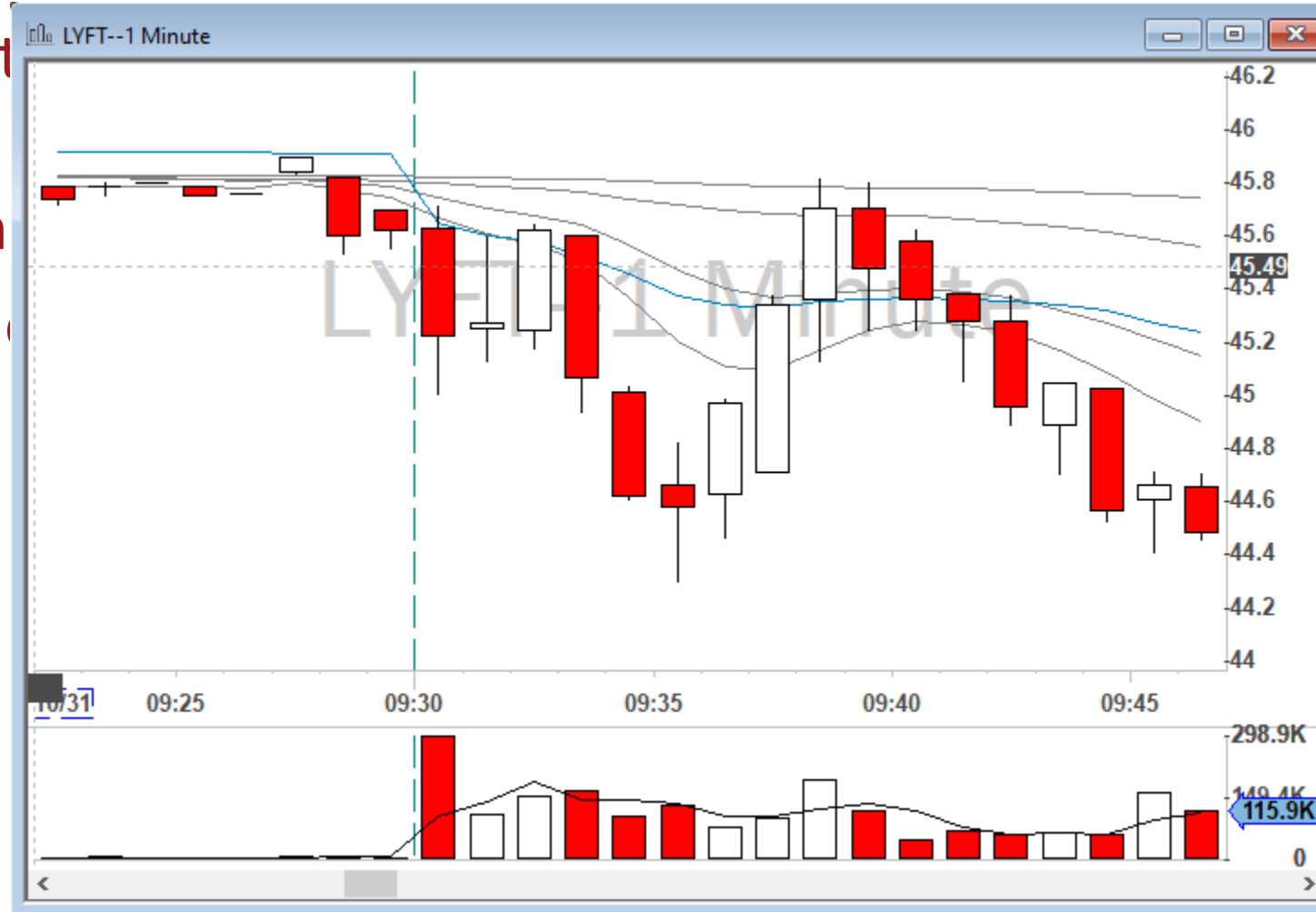
2)Examples: LYFT 31/10/2019

-<https://youtu.be/AzbG1FP3W8g>

1)LYFT was below the open..

2)At 9:37 it did a h

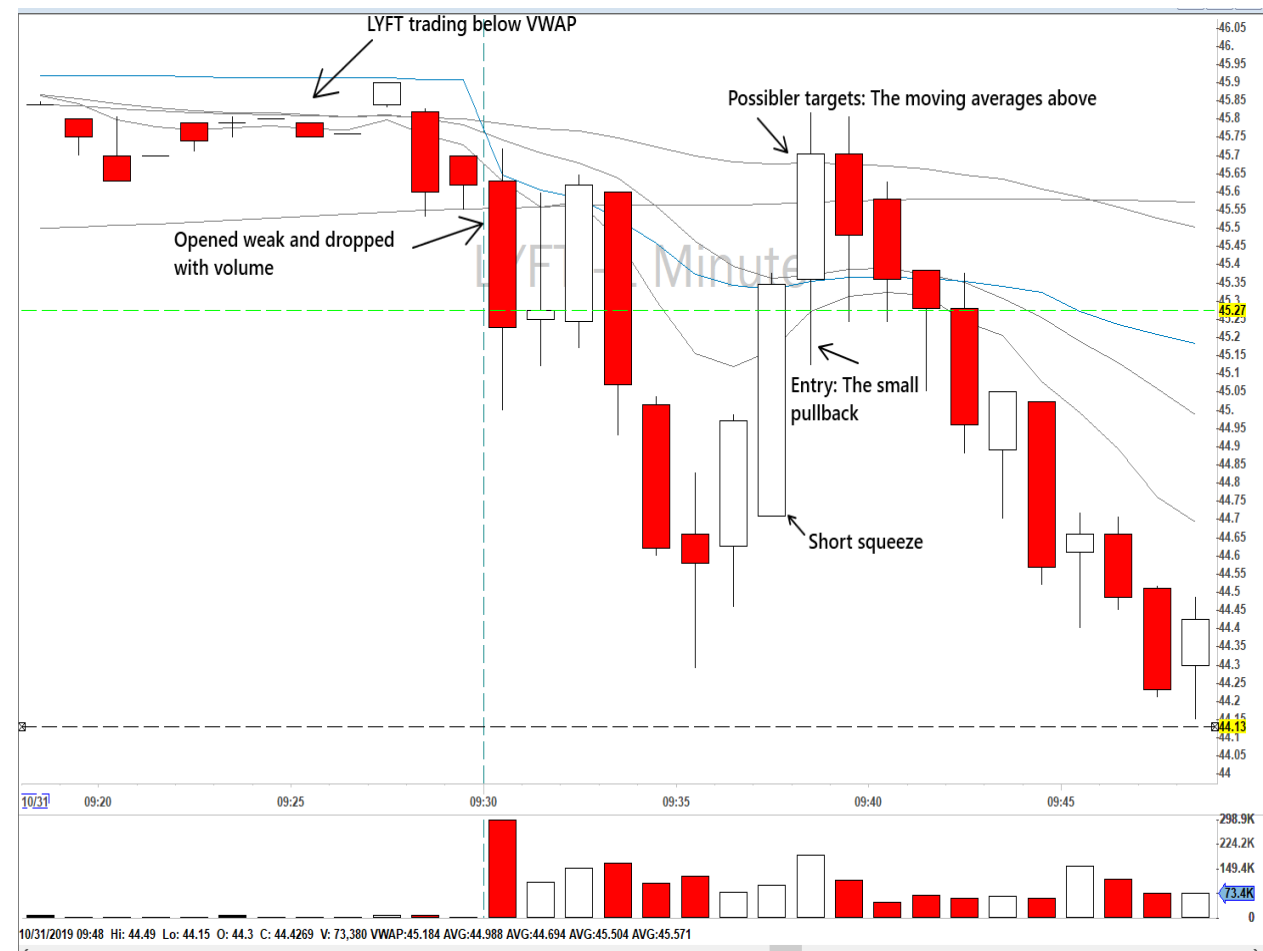
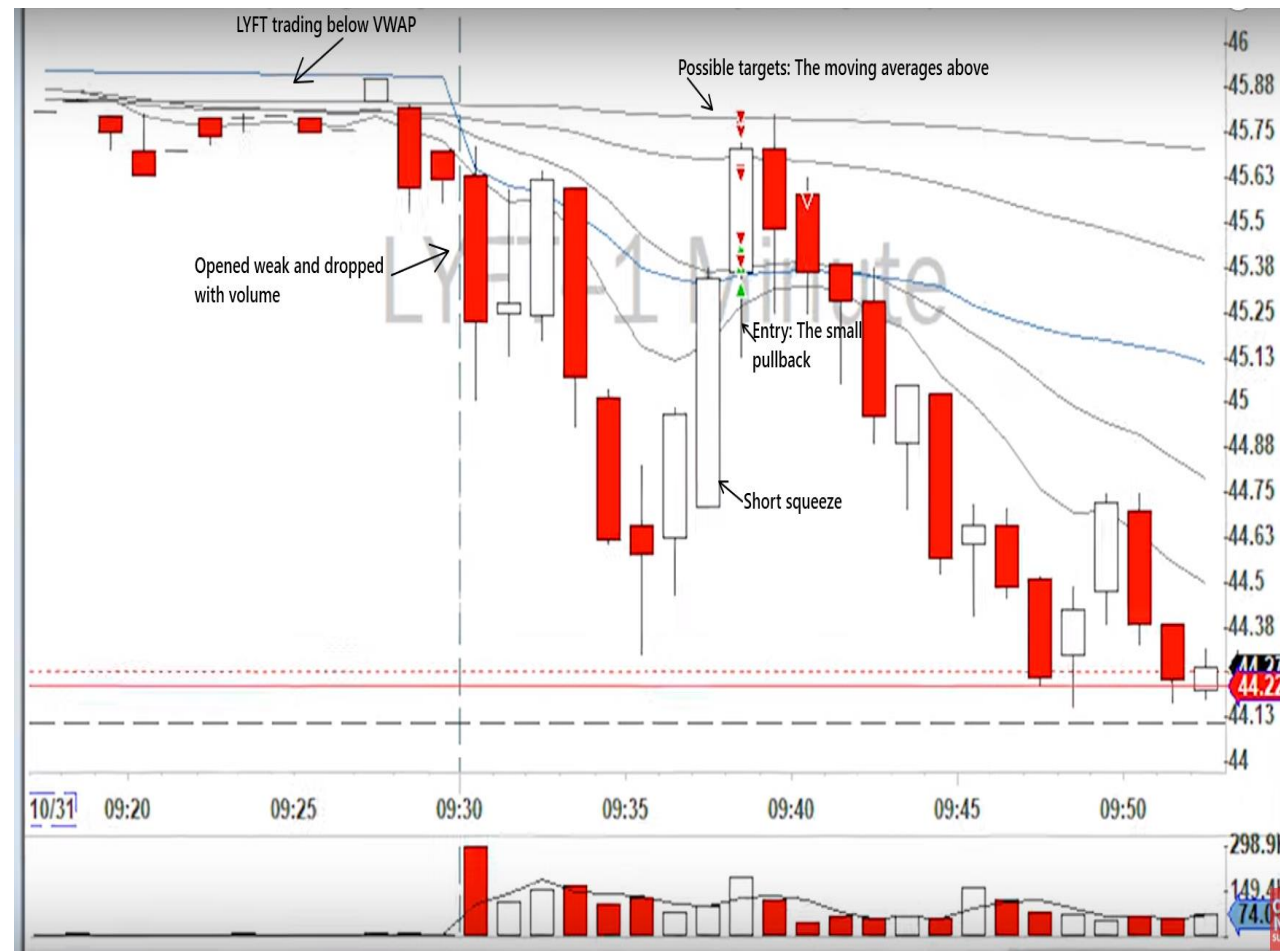
3)The small pullba



more at



3) Examples: LYFT



Examples: MYGN 05 November 2019

MYGN gapped down 40%

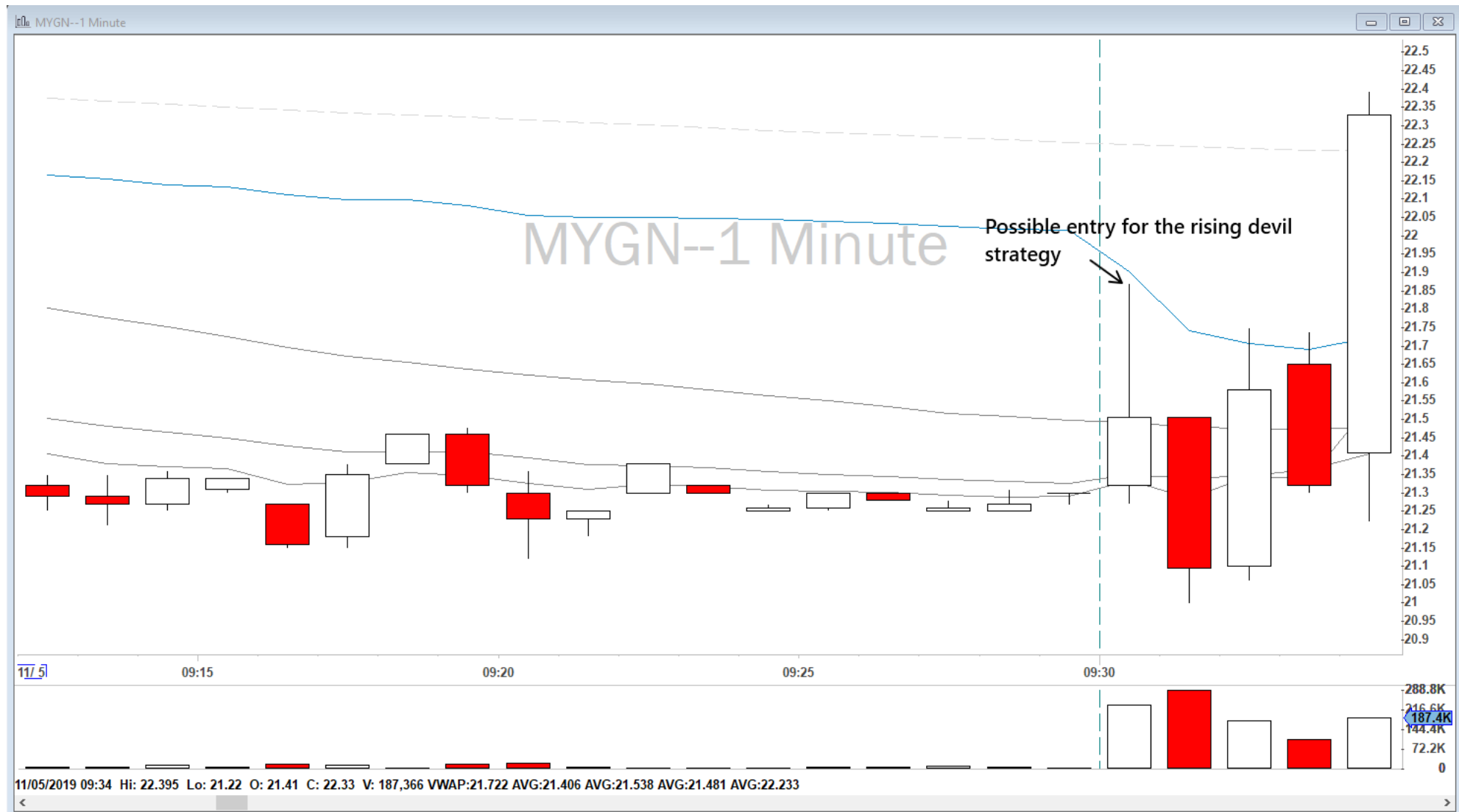
In pre-market traded well below VWAP which made it Rising devil candidate



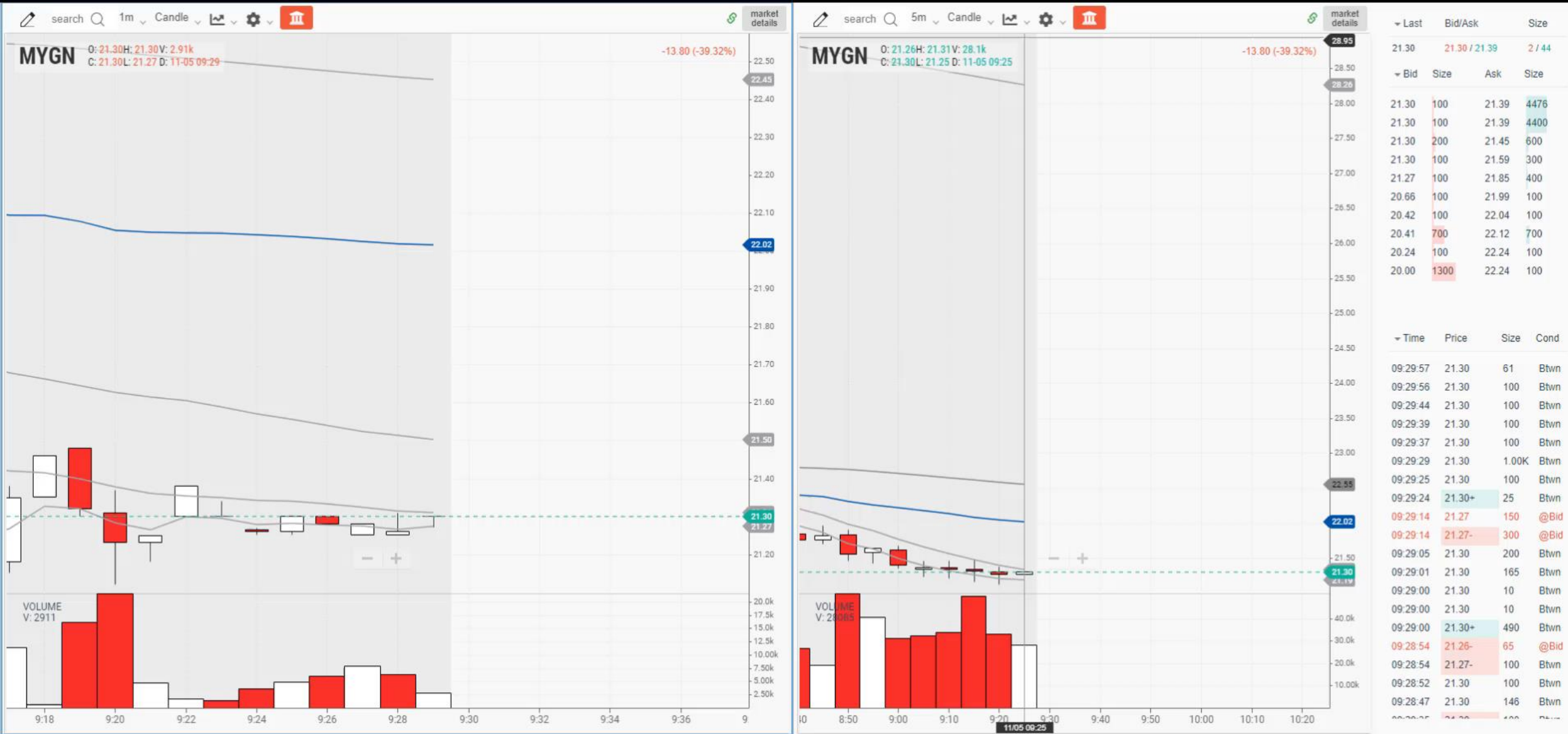
T Gappers (Pre-Market Movers): 9:00:00 - 9:04:59 11/05/2019								
Symbol	Price (\$)	Vol Today	Chg Close	Chg Close	Flt (Shr)	Avg True	Shrt Flt (%)	Sector
EVER	27.77	101,694	6.00	27.6	8.42M	1.11	10.91	Information
CHGG	33.40	125,854	4.07	13.9	115M	0.99	17.76	Educational Services
PCG	7.61	283,014	0.34	4.7	529M	0.86	8.24	Utilities
BYND	82.60	291,083	2.81	3.5	32.7M	8.25	10.20	Manufacturing
AMRN	17.95	743,081	0.50	2.9	328M	0.59		Manufacturing
BHP	52.34	142,326	1.43	2.8	1.47B	0.75		Mining, Quarrying, and Oil and
PTON	25.30	620,944	0.69	2.8	9.97M	1.62	65.46	Retail Trade
BP	40.23	519,324	0.87	2.2	3.59B	0.73		Manufacturing
UBER	28.97	1.53M	-2.11	-6.8	1.10B	1.46	5.63	Professional, Scientific, and Te
SHAK	69.50	401,258	-14.71	-17.5	28.6M	2.73	18.69	Accommodation and Food Ser
MYGN	21.51	611,042	-13.59	-38.7	73.6M	1.18	30.90	Manufacturing



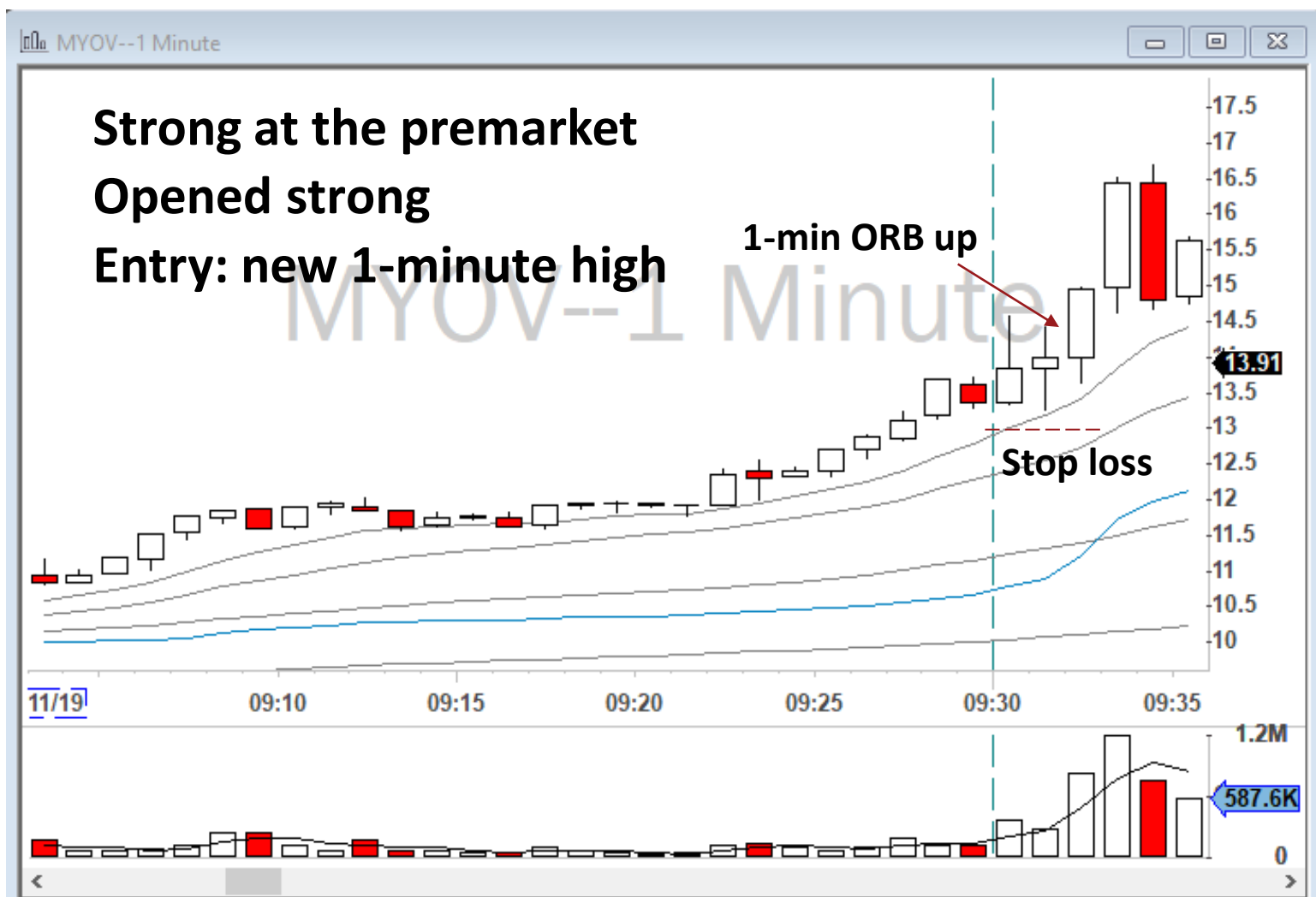
2) Examples: MYGN



2) Examples: MYGN



2) Examples: MYOV 19/11/2019

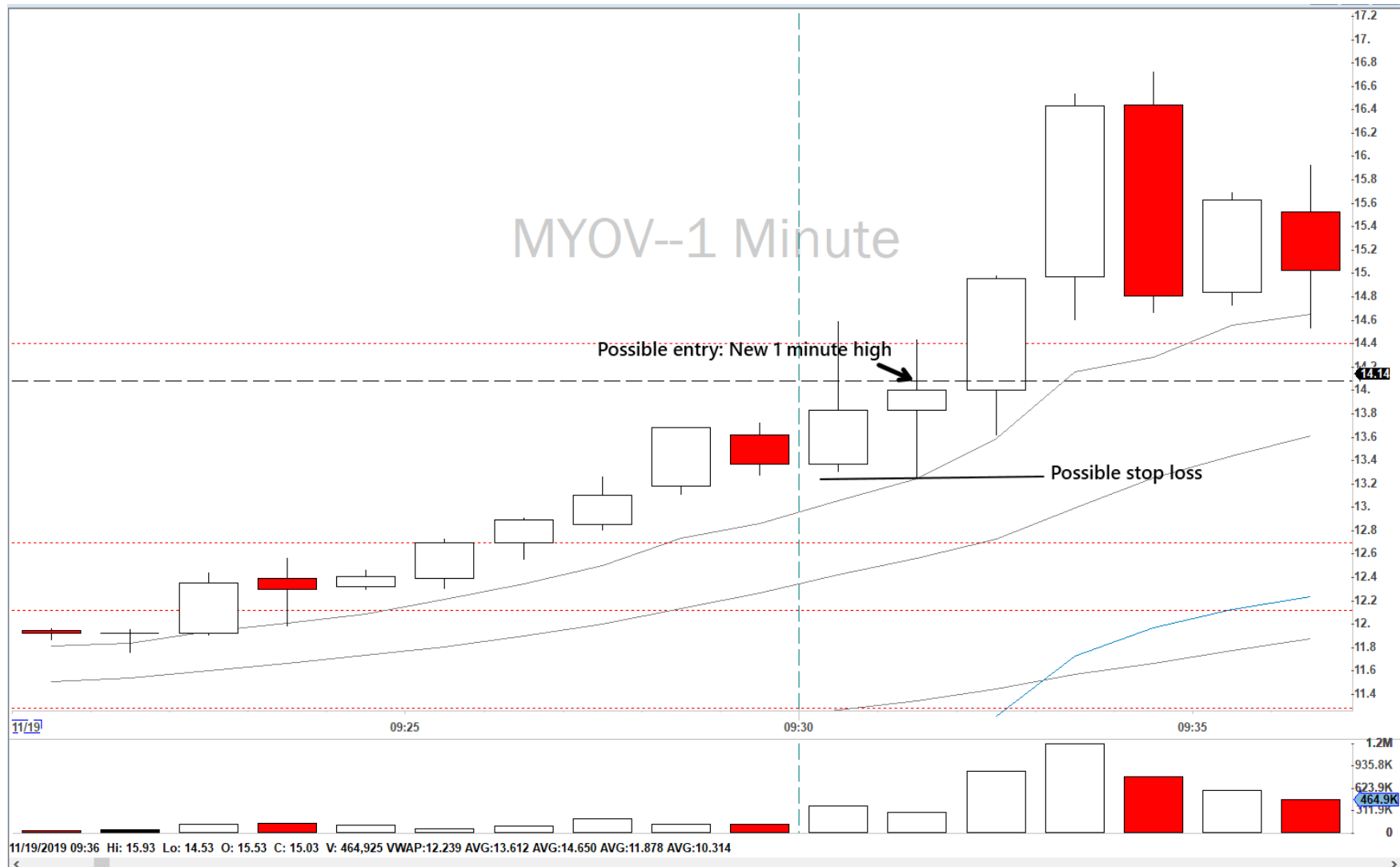


T Gappers (Pre-Market Movers): 9:00:00 - 9:04:59 11/19/2019

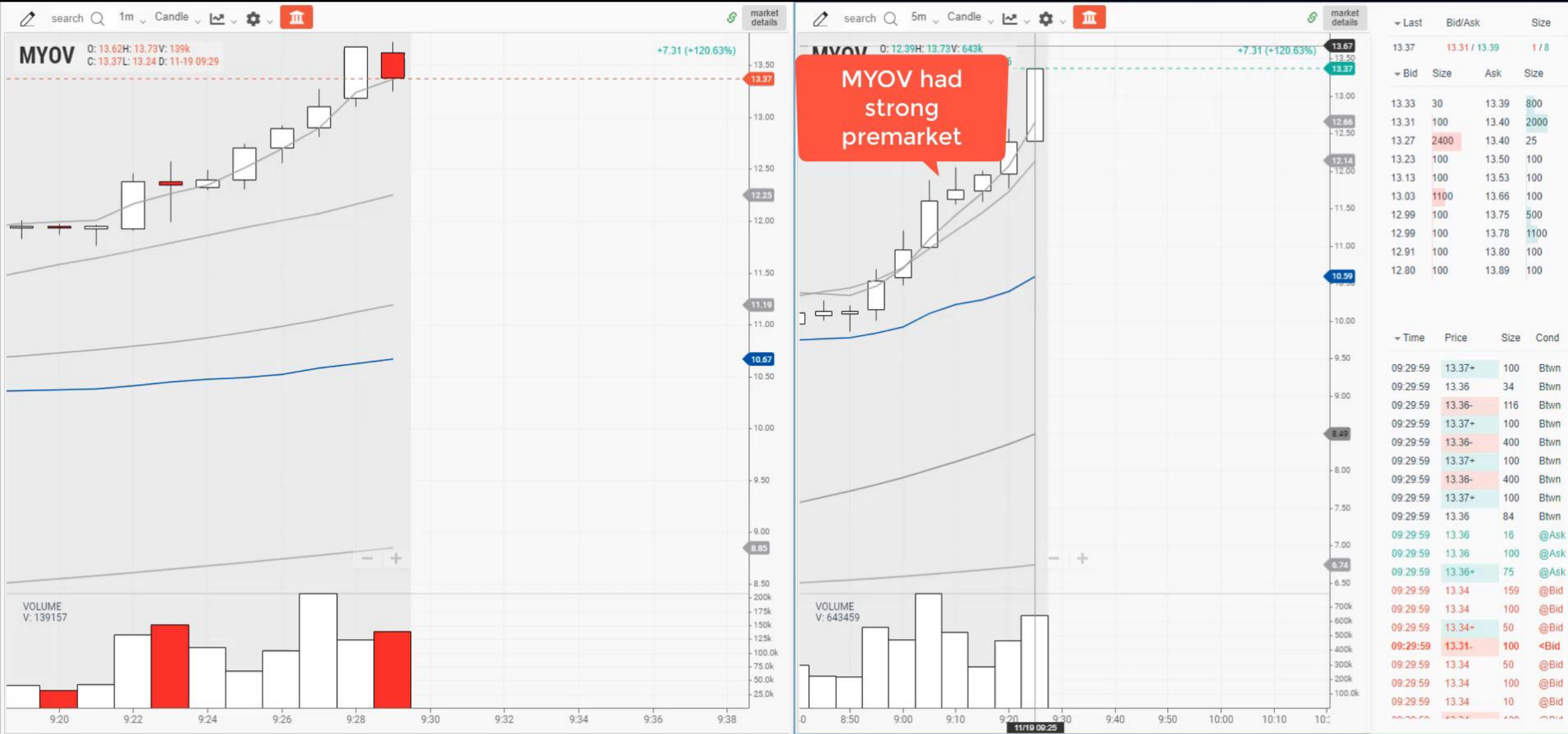
Symbol	Price (\$)	Vol Today	Chg Close	Chg Close	Fit (Shr)	Avg True	Shrt Fit (%)	Sector
MYOV	11.03	5.96M	4.97	82.0	87.9M	0.51	8.56	Manufacturing
MDCO	74.65	1.44M	16.00	27.3	69.4M	2.71	105.20	Manufacturing
CLVS	7.25	568,435	0.19	2.7	50.7M	0.74	43.34	Manufacturing
TEVA	10.56	899,827	0.22	2.1	1.09B	0.53		Manufacturing
ROKU	156.70	350,089	-3.42	-2.1	81.5M	9.10	10.70	Information
HD	230.20	558,912	-8.65	-3.6	1.09B	3.17	1.01	Retail Trade
M	15.90	1.23M	-0.98	-5.8	308M	0.62	30.80	Retail Trade
KSS	50.60	1.57M	-7.80	-13.4	159M	1.82	14.26	Retail Trade
I	6.95	287,304	-1.08	-13.4	134M	2.57	22.98	Information



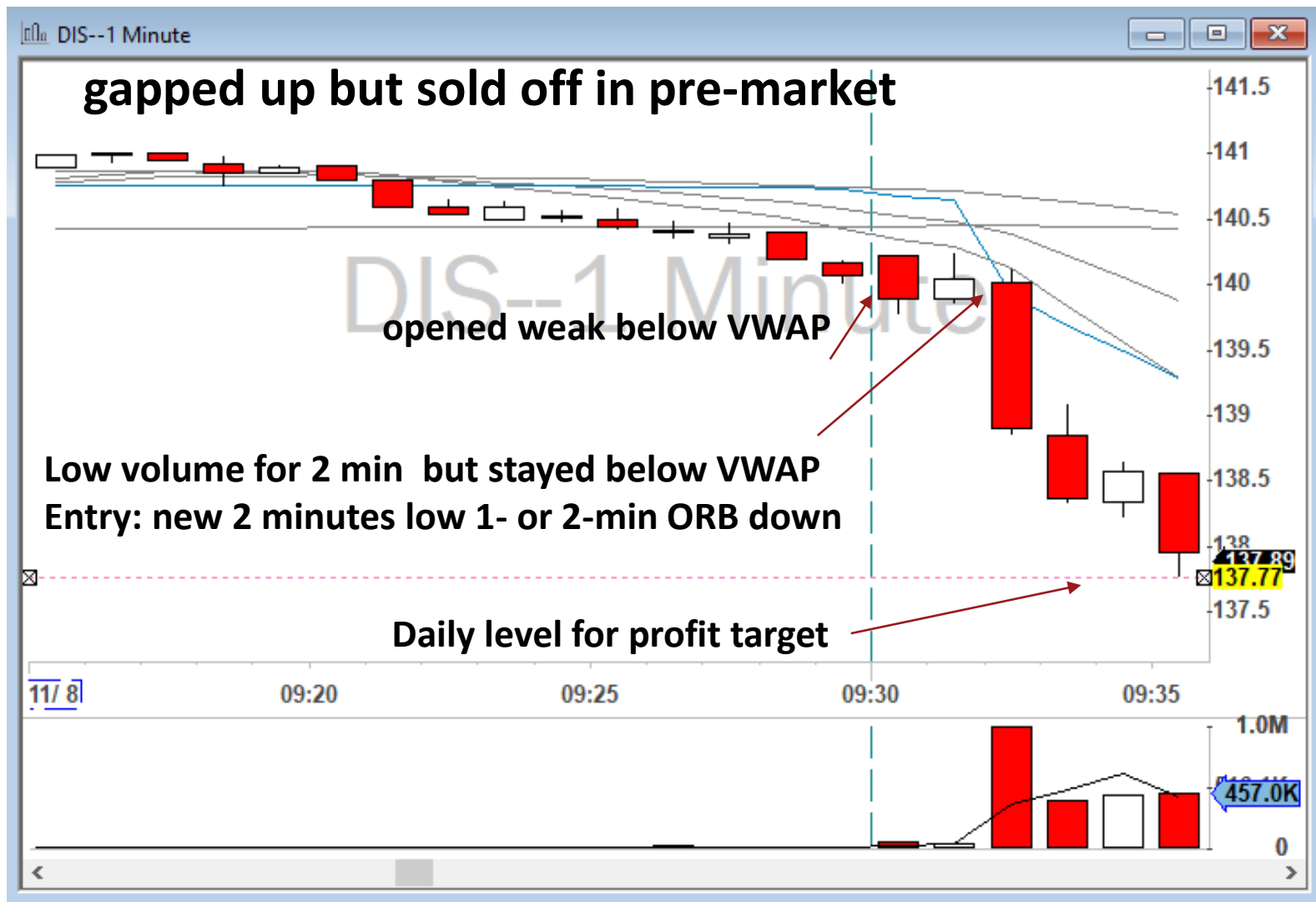
2) Examples: MYOV



2) Examples: MYOV



Examples: DIS 08/11/2019



Gappers (Pre-Market Movers): 9:00:00 - 9:04:59 11/08/2019

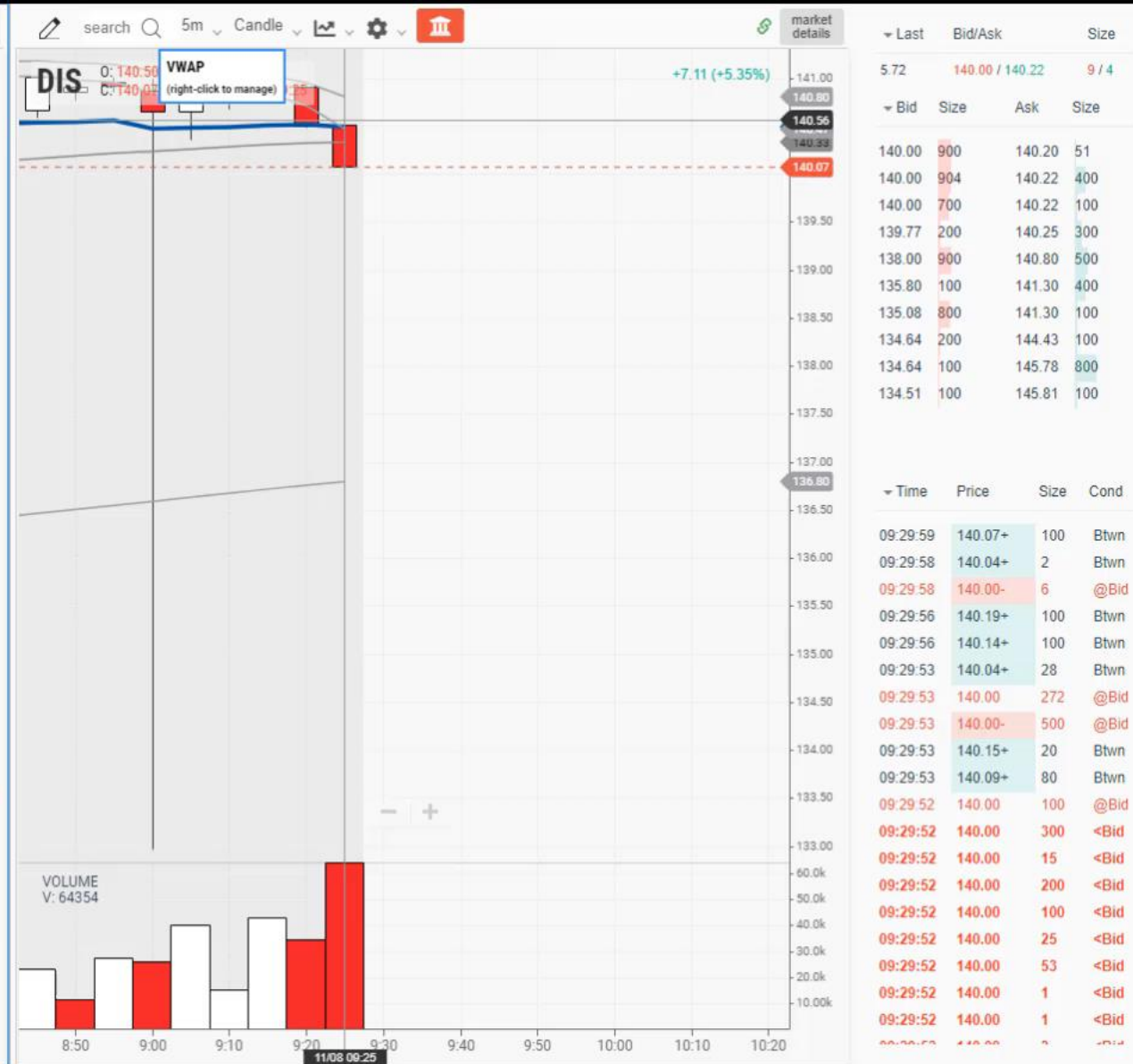
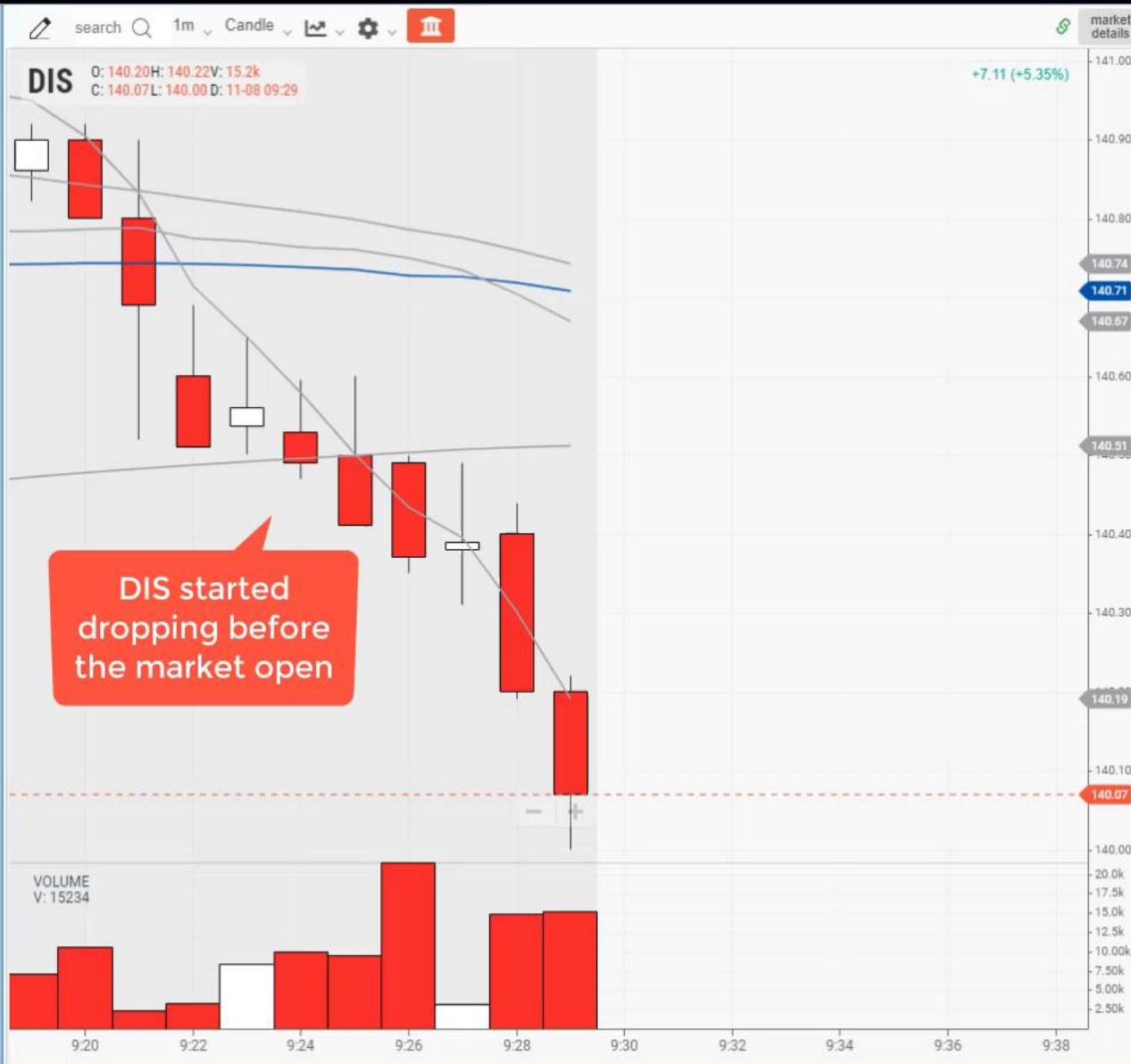
Symbol	Price (\$)	Vol Today	Chg Close	Chg Close	Flt (Shr)	Avg True	Shrt Flt (%)	Sector
DERM	9.09	212,888	2.12	30.4	49.7M	0.58	10.46	Manufacturing
DIS	140.88	687,942	7.92	6.0	1.49B	1.90	1.20	Information
LN	39.66	318,800	-1.11	-2.7	231M	0.86		Professional, Scientific, and Te
WORK	19.58	165,180	-0.76	-3.7	240M	1.14	20.11	Administrative and Support and Management and Remediation
AGIO	32.00	252,598	-1.77	-5.2	58.1M	1.88	42.83	Manufacturing
GPS	16.66	1.08M	-1.40	-7.8	240M	0.61	18.07	Retail Trade
TDC	23.25	262,718	-7.87	-25.3	113M	0.76	15.04	Information
ANAB	9.55	1.02M	-26.61	-73.6	24.3M	1.83	18.51	Manufacturing



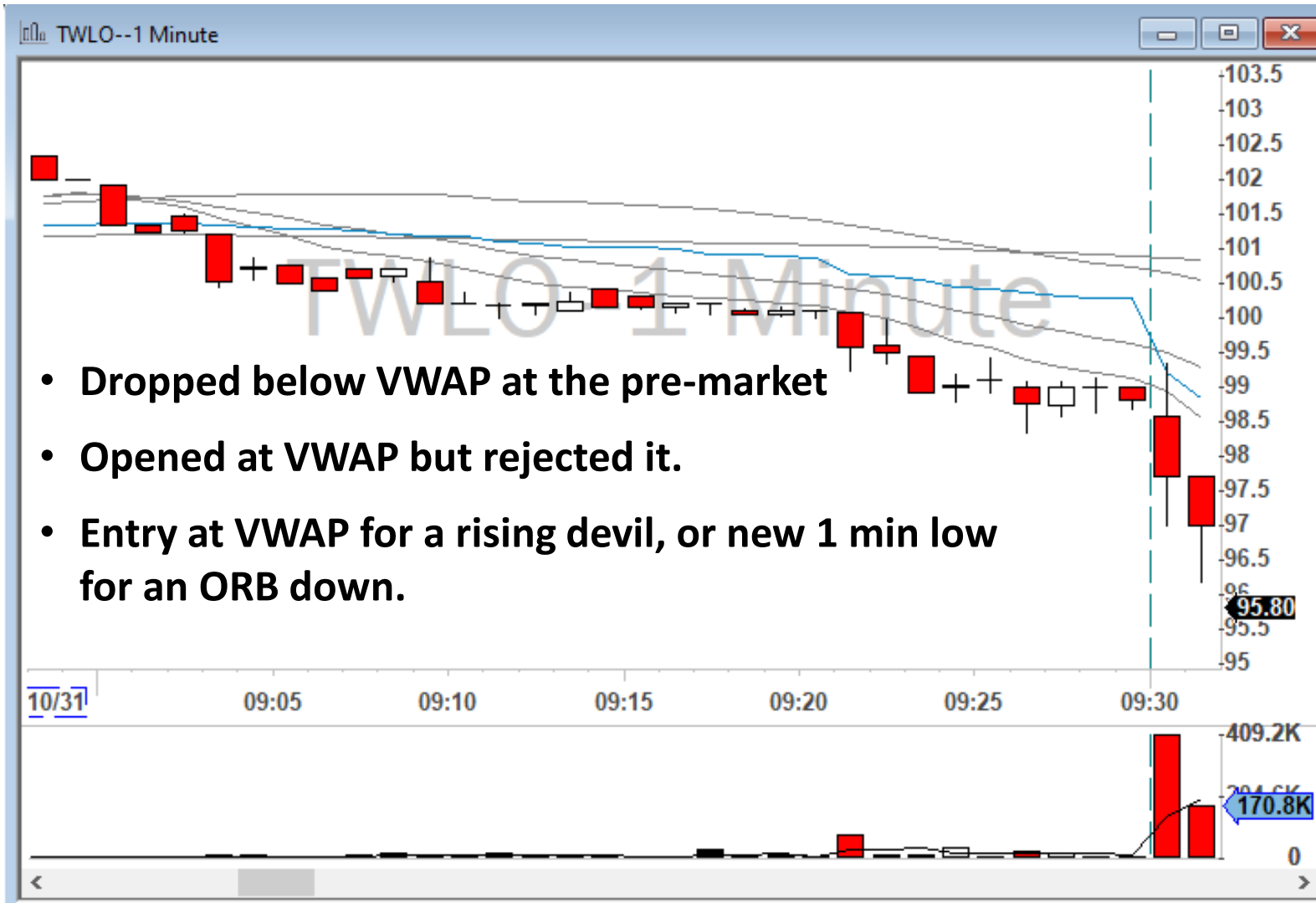
Examples: DIS 08 November 2019



2) Examples: DIS



Examples: TWLO 31/10/2019



T Gappers (Pre-Market Movers): 9:00:00 - 9:04:59 10/31/2019

Symbol	Price (\$)	Vol Today	Chg Close	Chg Close	Flt (Shr)	Avg True	Shrt Flt (%)	Sector
DRNA	18.10	141,421	2.36	15.0	56.7M	0.61	7.70	Professional, Scientific, and Te
SPWR	9.45	129,371	1.05	12.5	141M	0.54	32.62	Manufacturing
XNET	5.53	482,779	0.44	8.6	59.4M	0.58		Information
KHC	30.66	704,825	2.16	7.6	1.22B	0.54	2.93	Manufacturing
LITE	61.00	125,431	3.80	6.6	63.1M	1.58	8.92	Manufacturing
FB	196.37	934,401	8.12	4.3	2.39B	4.75	1.10	Information
LYFT	45.82	301,633	1.71	3.9	195M	1.69	9.60	Transportation and Warehousi
ABMD	187.06	156,471	5.29	2.9	44.4M	6.35	7.36	Manufacturing
X	11.65	101,625	-0.36	-3.0	170M	0.67	32.58	Manufacturing
PCG	5.92	583,558	-0.22	-3.6	529M	0.84	8.24	Utilities
CROX	36.00	242,012	-2.53	-6.6	68.2M	1.38	13.31	Manufacturing
TWLO	100.51	200,205	-7.19	-6.7	108M	4.38	16.09	Manufacturing
WDC	57.56	453,771	-4.60	-7.4	290M	1.72	4.84	Manufacturing
HBI	14.59	260,617	-1.44	-9.0	358M	0.52	17.30	Manufacturing
ETSY	47.70	118,117	-5.10	-9.7	119M	2.28	11.88	Retail Trade
W	84.30	1.12M	-16.78	-16.6	60.3M	6.08	32.64	Retail Trade
MMSI	20.10	224,667	-9.01	-31.0	53.1M	0.79	9.54	Manufacturing



Examples: TWLO 31 October 2019. Andrew Trade



2)Examples: TWLO

